



# Stourhead Drive

East Hunsbury, Northampton

oriordanbond  
SALES & LETTINGS



# Stourhead Drive

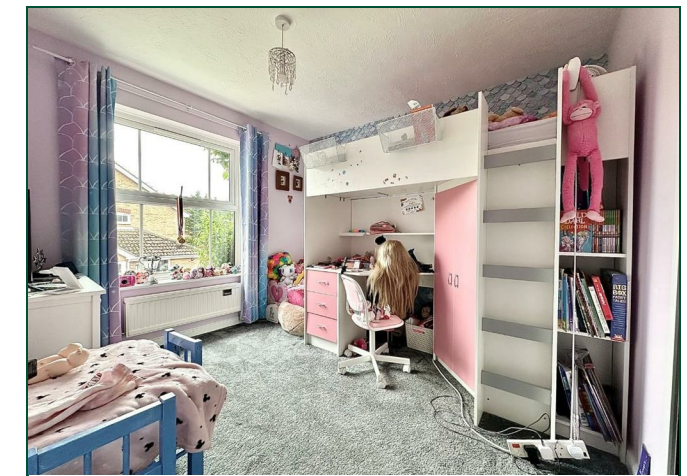
East Hunsbury  
NN4 0UH

Guide Price  
£350,000

**A well presented three bedroom detached family home nestled at the end of a desirable cul-de-sac within East Hunsbury. This property offers generous accommodation over two floors.**

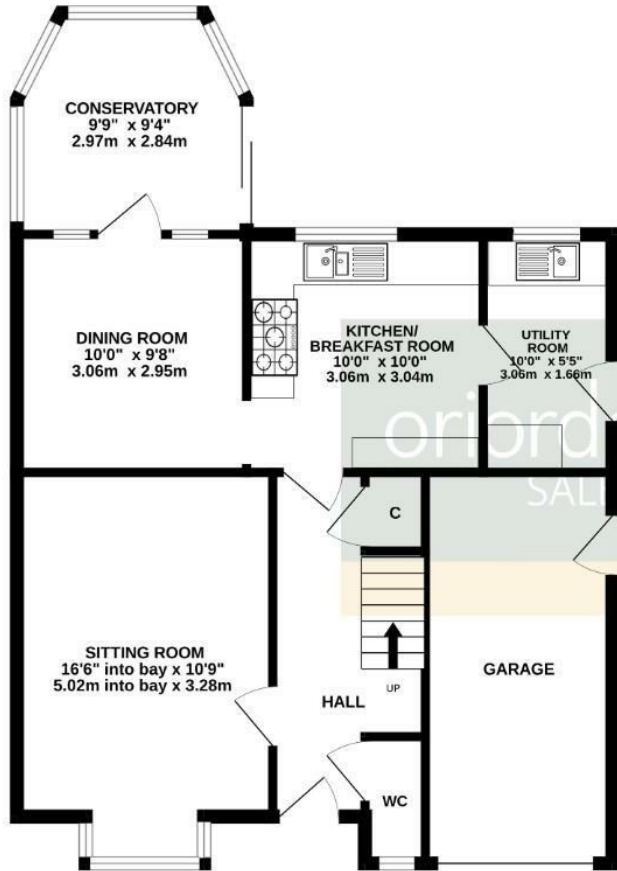
Entrance hall with stairs to the first floor, a storage cupboard under, a modern cloakroom/WC and doors to all other rooms. There is a good size sitting room with feature fireplace and bay window, a separate dining room, conservatory, kitchen/breakfast room with range style oven and a separate utility room. To the first floor is a light and airy landing with access to the loft space, an airing cupboard housing a re-fitted combination boiler, doors to three bedrooms with the main bedroom benefitting from fitted wardrobes and an en-suite shower room. There is also a modern family bathroom with a shower over the bath. Outside, the property sits on a corner plot and has a lawned front garden with driveway leading to an integral garage. The rear garden is a generous size, laid mainly to lawn, has mature plants and shrubs, a paved patio seating area and timber fencing to enclose. Further benefits include uPVC double glazing and gas radiator heating. (B/1151/M)

- Well presented three bedroom detached family home
- En-suite to master bedroom
- Two reception rooms and conservatory
- Gas radiator heating
- Corner plot with generous rear garden
- Driveway and integral garage

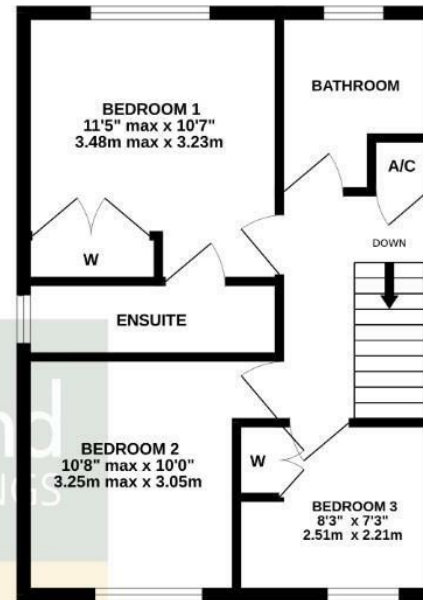




GROUND FLOOR  
729 sq.ft. (67.8 sq.m.) approx.

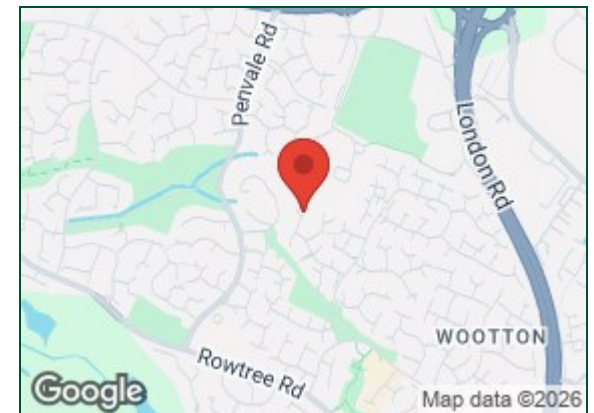


1ST FLOOR  
422 sq.ft. (39.2 sq.m.) approx.



TOTAL FLOOR AREA : 1151 sq.ft. (107.0 sq.m.) approx.

Whilst every attempt has been made to ensure the accuracy of the floorplan contained here, measurements of doors, windows, rooms and any other items are approximate and no responsibility is taken for any error, omission or mis-statement. This plan is for illustrative purposes only and should be used as such by any prospective purchaser. The services, systems and appliances shown have not been tested and no guarantee as to their operability or efficiency can be given.  
Made with Metropix ©2026



#### Additional information

- Council Tax Band: D
- Energy Efficiency Rating:

#### Viewing

Viewing strictly by appointment – details below

#### Disclaimer

O'Riordan Bond Estate Agents Limited has not tested apparatus, equipment, fittings or services and so cannot verify they are in working order. The buyer is advised to obtain verification from their solicitor or surveyor.

O'Riordan Bond Hunsbury Sales

01604 706007

hunsbury@oriordanbond.co.uk

