

JOHN DALE Estate Agency

kw POWERED BY
KELLERWILLIAMS

Bramber Close, Lancing, BN15 0JA

- Prime Sought-After Location
- Stylishly Presented
- Bright Open-Plan Lounge/Kitchen/Dining
- Sunny West-Facing Rear Garden
- Front Garden, Driveway & Garage
- Separate Utility Room
- Close to Shops, Schools, Transport, Parks & South Downs
- EPC Rating: C

Price Range

£450,00 – £470,000

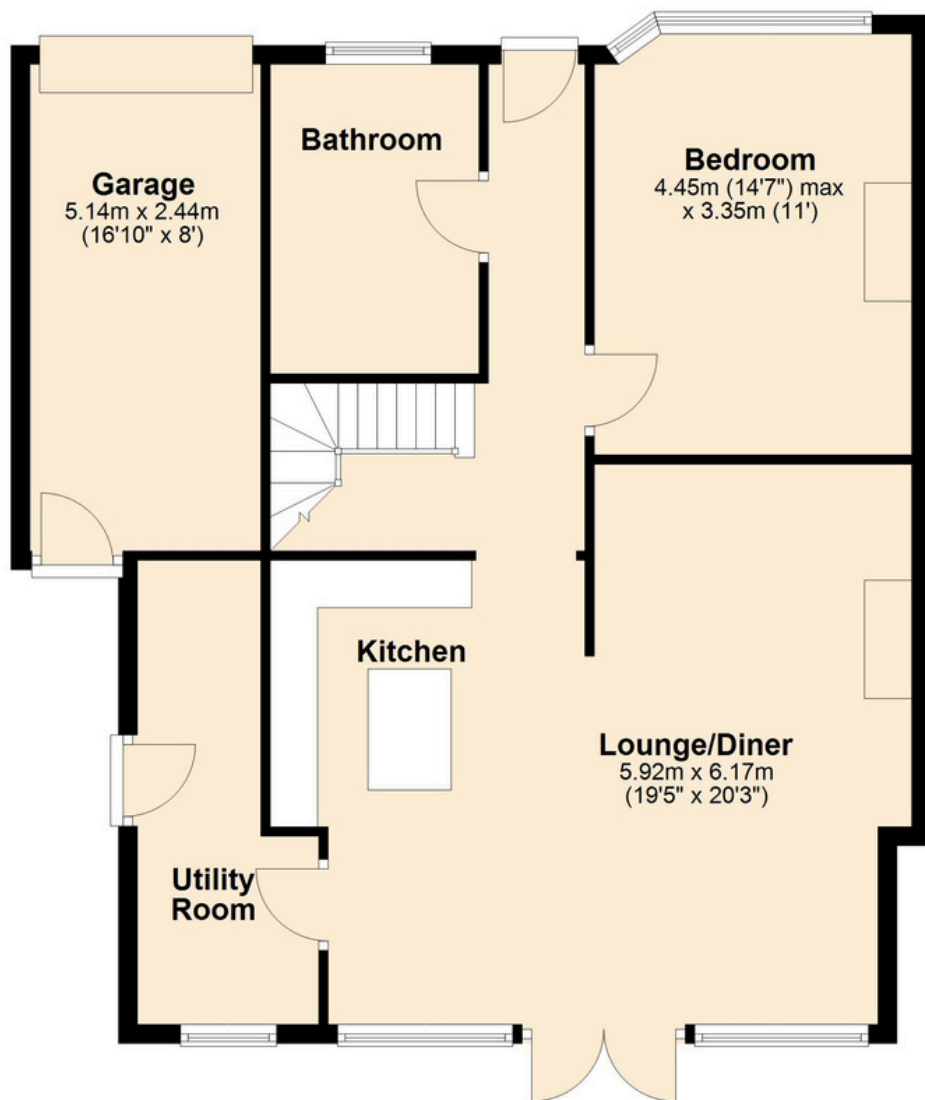






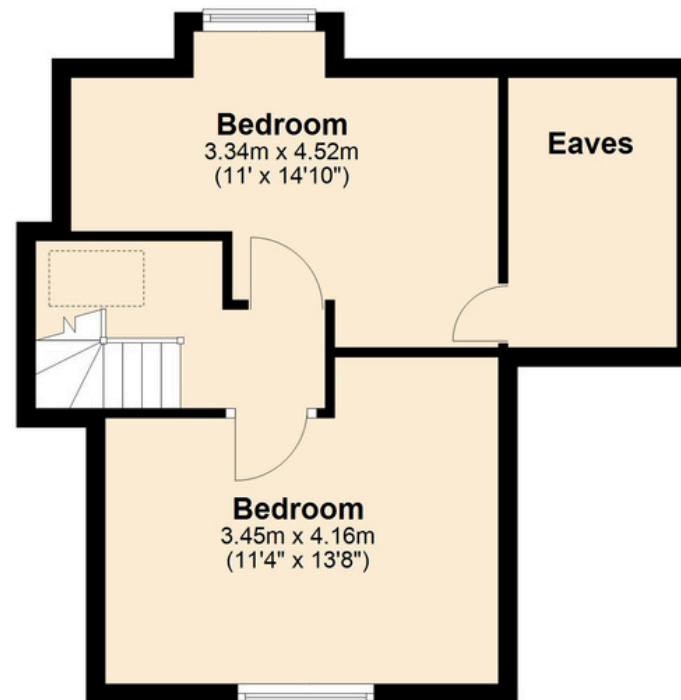
Ground Floor

Approx. 89.0 sq. metres (958.1 sq. feet)



First Floor

Approx. 34.6 sq. metres (372.6 sq. feet)



Total area: approx. 123.6 sq. metres (1330.7 sq. feet)

07850 384 867
johndale@kwuk.com