



HARDINGS




Temple Road
£2,700 PCM





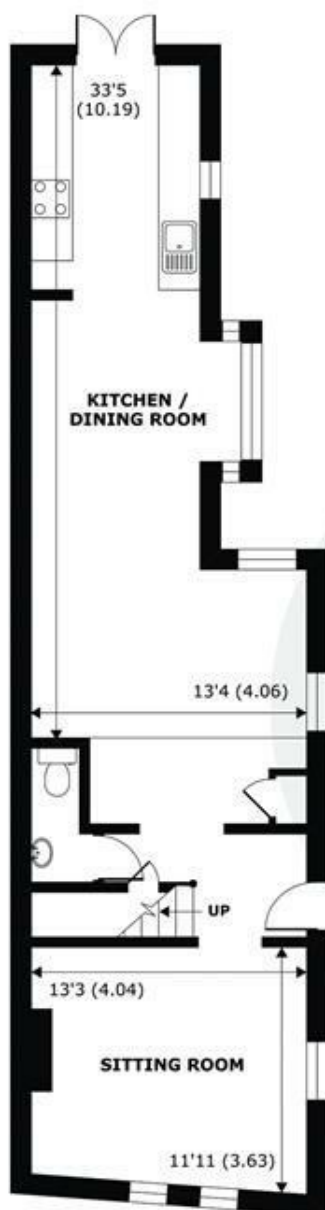
A Beautifully presented, four bedroom Victorian villa only a few minutes walk from Windsor town centre and train stations. The property was refurbished in 2018 and has been maintained to a high standard.

Energy Efficiency Rating		
	Current	Potential
Very energy efficient - lower running costs		
(92 plus) A		
(81-91) B		
(69-80) C		75
(55-68) D		
(39-54) E	54	
(21-38) F		
(1-20) G		
Not energy efficient - higher running costs		
England & Wales	EU Directive 2002/91/EC 	

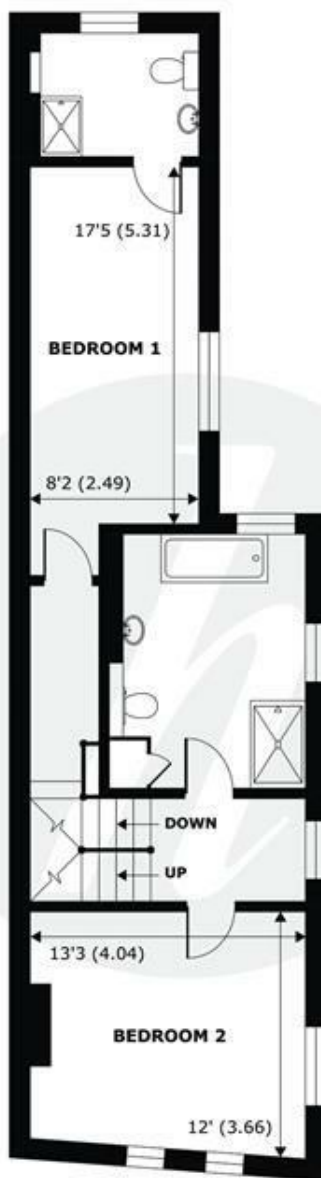
Features

- Four bedroom house
- Separate sitting Room
- Two bathrooms
- Extremely spacious
- Tax band F & EPC D
- Open plan kitchen/dining room
- Downstairs cloakroom
- Small courtyard garden
- Unfurnished
- Available Mid February

NOT TO SCALE

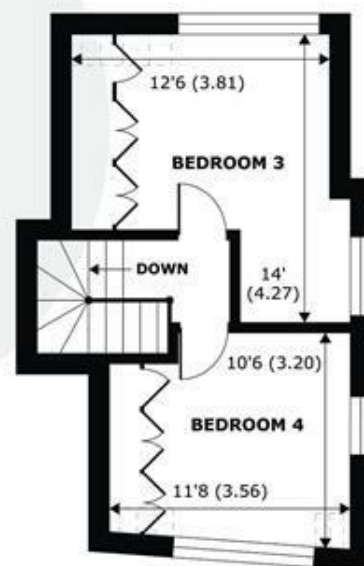
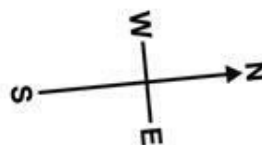


GROUND FLOOR
abt 752 SQFT (69.8 SQMT)



FIRST FLOOR
abt 736 SQFT (68.4 SQMT)

Denotes restricted head height



SECOND FLOOR
abt 399 SQFT (37.1 SQMT)

**APPROX. GROSS INTERNAL FLOOR AREA 1507 SQFT 140 SQM
(EXCLUDES RESTRICTED HEAD HEIGHT)**

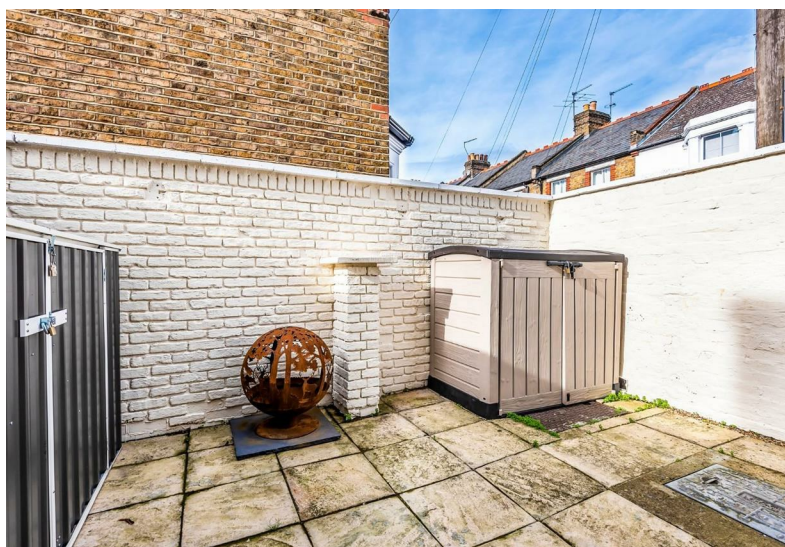
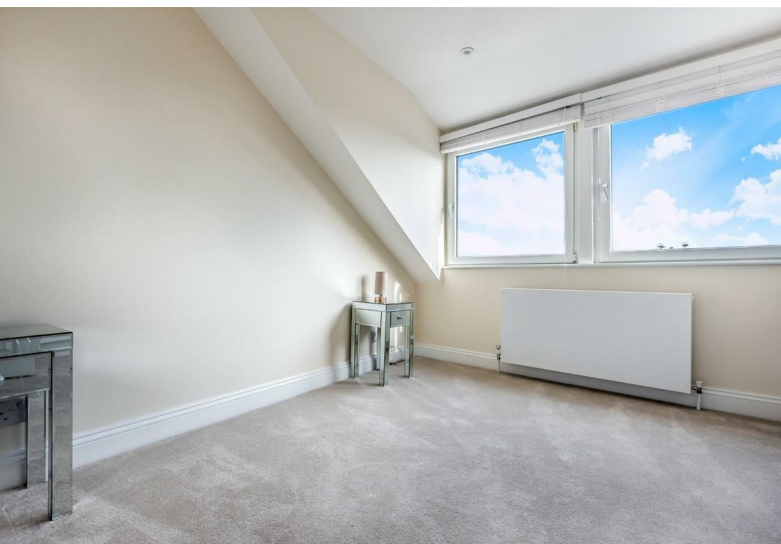
APPROX. GROSS EXTERNAL FLOOR AREA 1887 SQFT 175.3 SQM

Temple Road, Windsor, SL4



Whilst every attempt has been made to ensure the accuracy of the floor plan contained here, measurements of doors, windows and rooms are approximate and no responsibility is taken for any error, omission or misstatement. These plans are for representation purposes only as defined by RICS Code of Measuring Practice and should be used as such by any prospective purchaser. Specifically no guarantee is given on the total square footage of the property if quoted on this plan. Any figure given is for initial guidance only and should not be relied on as a basis of valuation.

Copyright nichecom.co.uk 2019 Produced for Hardings ref. 447573



11 High Street, Windsor, Berkshire, SL4 1LD,
T: 01753 833 118 | E: info@hardings.co.uk
www.hardings.co.uk

