

Langton Road, Bristol, BS4 4EP
Asking Price £485,000



Langton Road, Bristol, BS4 4EP

Asking Price £485,000

Council Tax Band: B

This very well presented three bedroom terraced home. This property has been cared for and maintained to a high standard.

With high ceilings and tasteful improvements this property has a lot to offer.

Enter through the front garden into a porch. The tile floor hall brings you into the open plan lounge and dining rooms. Carry on to the rear of the house and you will find the kitchen and breakfast room.

Upstairs are three bedrooms, two doubles and one small single, a large bathroom and spacious landing. The loft is partially boarded and has two velux windows fitted. The roof has been recently replaced giving the option to extend if so desired.

The large, long rear garden is a gardeners delight. With a Summer House and two further storage sheds it enables you to create a little oasis of calm.

This property has a number of green spaces nearby including the delightful Nightingale Valley and is close to Sandy Park with its many amenities, shops and eateries. There are plentiful public transport links with multiple bus routes and is in a great location for commuting into Bristol or even onto Bath and further afield via Bristol Temple Meads Railway Station the A4 and A37.

This property will, we believe, be popular so please call to book your viewing as soon as possible.

Porch

uPVC double glazed front door with frosted panels. Tile floor.

Hall

Tile floor. Under stairs storage. Radiator.

Lounge

12'9" x 12'7" (3.9 x 3.86)
uPVC double glazed leaded effect bay windows. Fitted window blinds. Feature fire place with gas fire. Laminate flooring. Ceiling coving. Radiator.

Dining room

13'3" x 10'7" (4.06 x 3.25)
uPVC double glazed French doors. Ceiling coving. Radiator. Laminate flooring.

Kitchen

10'4" x 9'4" (3.15 x 2.85)
uPVC double glazed windows. Wall and floor mounted storage units. Tile floor. Stainless steel sink and drainer. Dual fuel range cooker. Tile splash backs. Space for a dishwasher and washing machine.

Breakfast room

10'0" x 9'4" (3.07 x 2.86)
uPVC double glazed windows. uPVC double glazed door to rear garden. Tile floor. Radiator.

Landing

Loft access hatch

Bedroom 1

13'1" x 10'6" (4.01 x 3.22)

To the rear of the property. uPVC double glazed windows. Window blinds. Radiator.

Bedroom 2

13'10" x 10'4" (4.23 x 3.15)

uPVC double glazed bay window. Fitted blinds. Radiator. Ceiling coving. Large airing cupboard.

Bedroom 3

9'10" x 5'4" (3.01 x 1.64)

uPVC double glazed windows. Radiator. Storage cupboard.

Bathroom

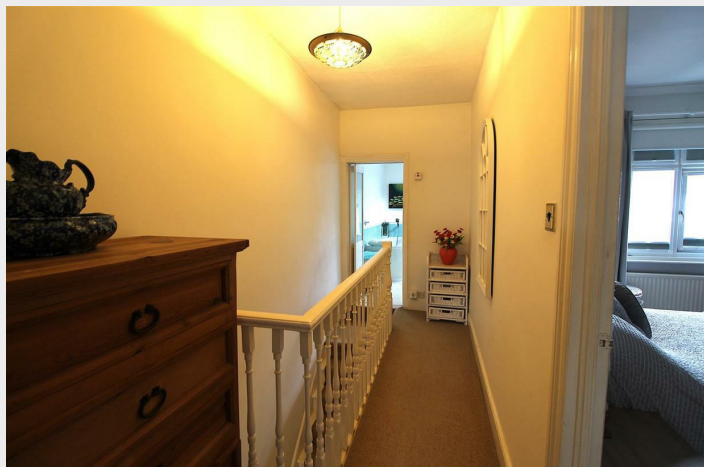
10'4" x 9'6" (3.15 x 2.92)

uPVC double glazed frosted windows. Velux roof light. Jacuzzi panel bath. Low level WC. Basin on vanity unit. Large shower cubicle. Radiator. recessed spot lights. Tile floor. Part tile walls.

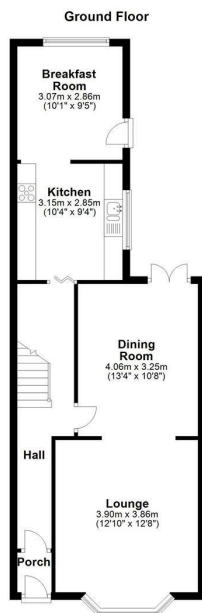
Rear garden

A gardeners delight. A large garden in the city. Currently laid to patio and with an area of artificial grass with borders in which there are mature shrubs. There is a large summer house with a power supply. Ideal as a place to relax or a home office. There are two further storage sheds. Rear access gate.

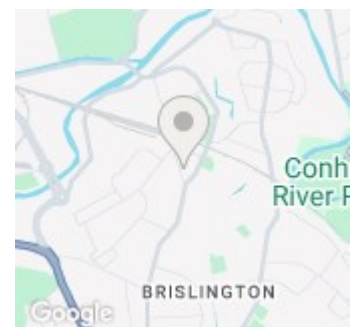








Open House Bristol North East



Energy Efficiency Rating		
	Current	Potential
Very energy efficient - lower running costs		
(92 plus) A		
(81-91) B		
(69-80) C		79
(55-68) D	59	
(39-54) E		
(21-38) F		
(1-20) G		
Not energy efficient - higher running costs		
England & Wales		EU Directive 2002/91/EC