



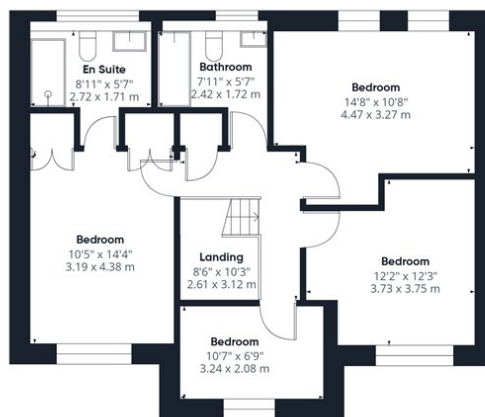
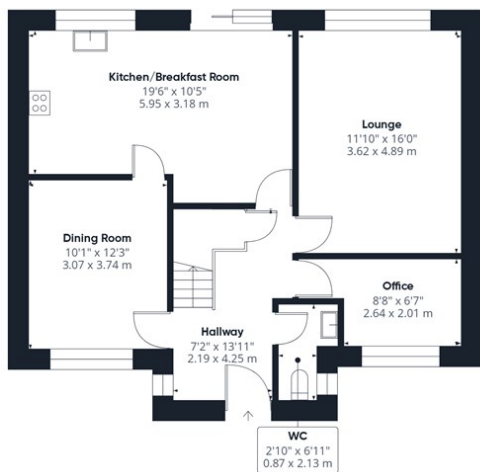
Nightingale Way, Thetford, IP24 2YN

£425,000

This well presented four bedroom family home is located in the highly desirable Nunnery Fields development, featuring three spacious reception rooms, south-east facing rear garden and a double garage.

- SOUGHT AFTER NUNNERY FIELDS DEVELOPMENT
- CORNER PLOT POSITION
- VERY WELL PRESENTED THROUGHOUT
- EN SUITE TO MASTER BEDROOM
- DOUBLE DETACHED GARAGE
- CLOSE PROXIMITY TO NUNS BRIDGES & THE B.T.O
- SPACIOUS FOUR BEDROOM DETACHED HOUSE
- THREE RECEPTION ROOMS
- ESTABLISHED SOUTH-EAST FACING REAR GARDEN
- VIEWING ADVISED!





Approximate total area⁽¹⁾
 1668 ft²
 154.8 m²



(1) Excluding balconies and terraces

Calculations reference the RICS IPMS 3C standard. Measurements are approximate and not to scale. This floor plan is intended for illustration only.

GIRAFFE360

