



## Albany Street, NW1

£1,153 Per week

**Dexters**



## Albany Street, NW1

An exceptionally spacious and stylish two double bedroom duplex on the second and third floors of this well maintained Period Mansion house, located close to Great Portland Street.

The apartment is finished to a high and modern standard throughout and has an entrance hall that leads to a large bright reception room easterly facing living/dining room with wood floors and a door leading to a private terrace.

There is also an adjoining kitchen with integrated appliances.

On the upper floor there is a master bedroom with built in wardrobes and en suite bathroom and second double bedroom and and bathroom.

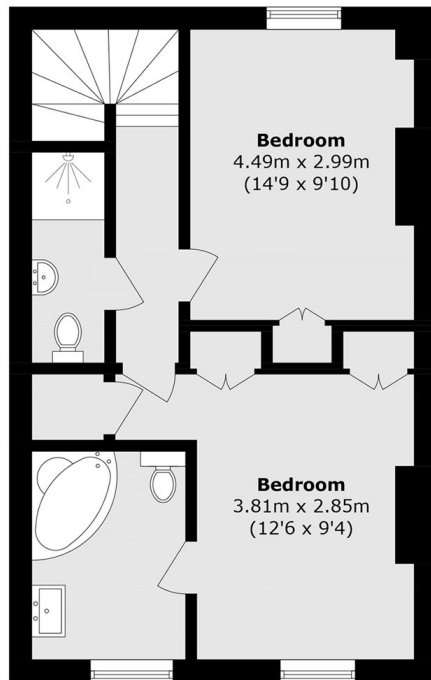
Albany Street is a popular street which runs from Marylebone Road up to Gloucester Gate and is just moments from Great Portland Street Underground.

### Features

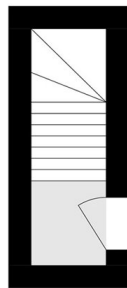
- Two Double Bedrooms
- Large Reception
- Three bathrooms
- Private Terrace
- Wood Floors
- Period Conversion



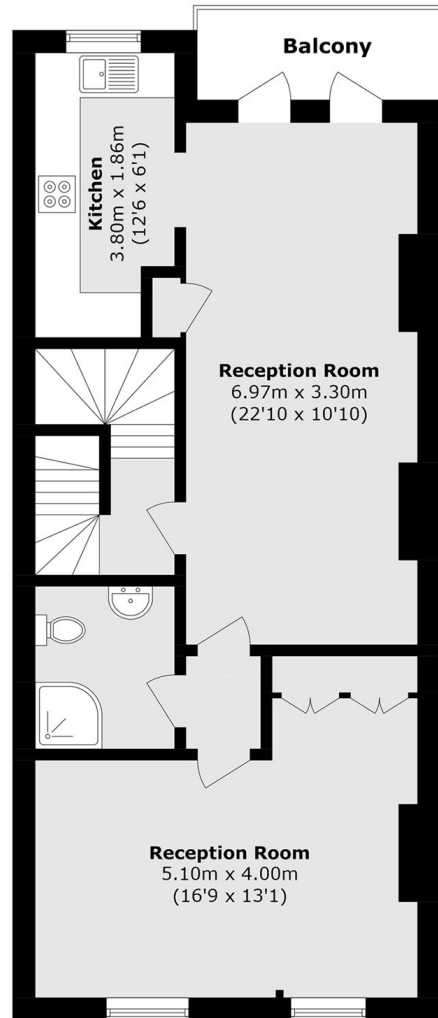
# Albany Street, London, NW1



Third Floor



First Floor



Second Floor

Total area (approx.): 107.3 sq. m (1154.9 sq. ft)  
Balcony area (approx.): 4 sq. m (43 sq. ft)