



Weltje Road, W6

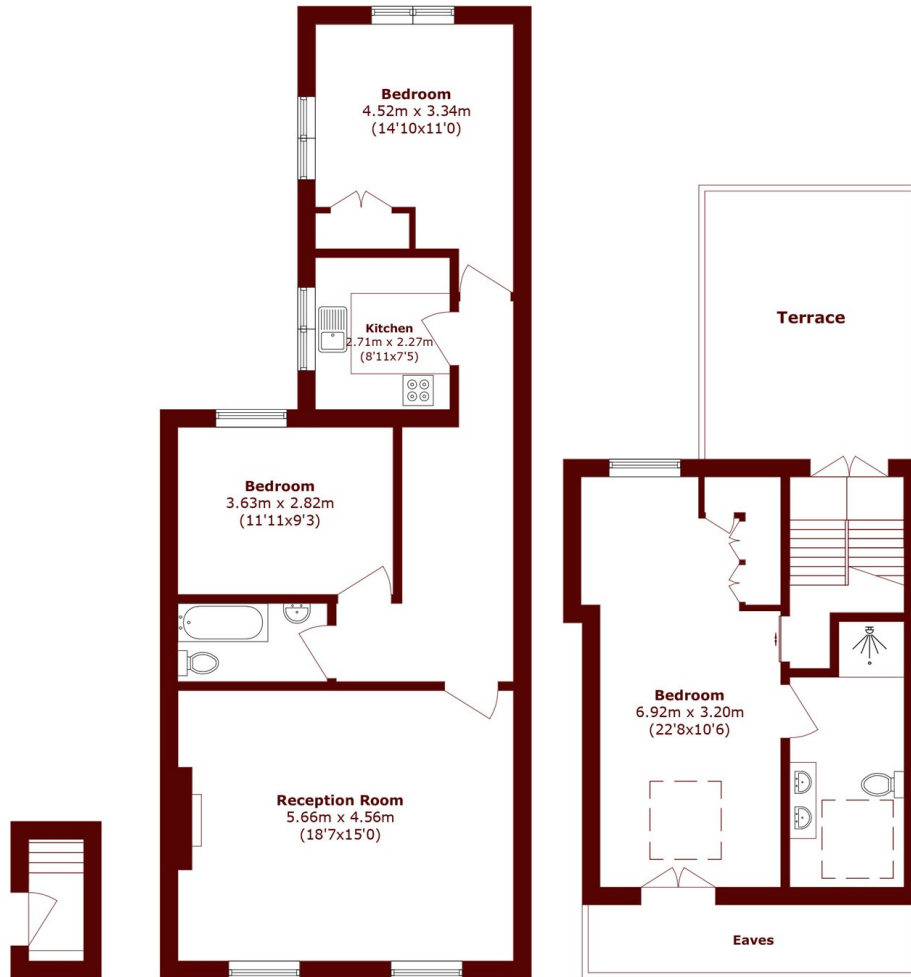
£1,025,000



- Three Bedrooms
- Two Bathrooms

- Off Street Parking
- Private Terrace

- Split Level
- Close To The River



First Floor

Second Floor

Third Floor

Total area (approx.): 111.8 sq. m (1203.4 sq. ft)

Terrace area (approx.): 16.2 sq. m (174.4 sq. ft)

(Excluding Eaves)

Marsh & Parsons Brook Green

107-109 Shepherds Bush
Road, London, W6 7LP
020 7605 7765

We aim to make our particulars both accurate and reliable. However, they are not guaranteed; nor do they form part of an offer or contract. If you require clarification on any points then please contact us, especially if you're traveling some distance to view. Please note that appliances and heating systems have not been tested and therefore no warranties can be given as to their good working order.