



## Herbert Road, KT1

£2,995 Per calendar month

A delightful and fully refurbished semi detached house benefiting from three good size rooms and landscaped garden. The accommodation consists of bay fronted reception room, modern fitted kitchen and three bedrooms. Call us now to arrange a viewing.

Herbert Road Is conveniently situated for both Surbiton and Kingston stations, Athelston recreational ground is just at the end of the road, and there is a selection of outstanding local schools.

### Features

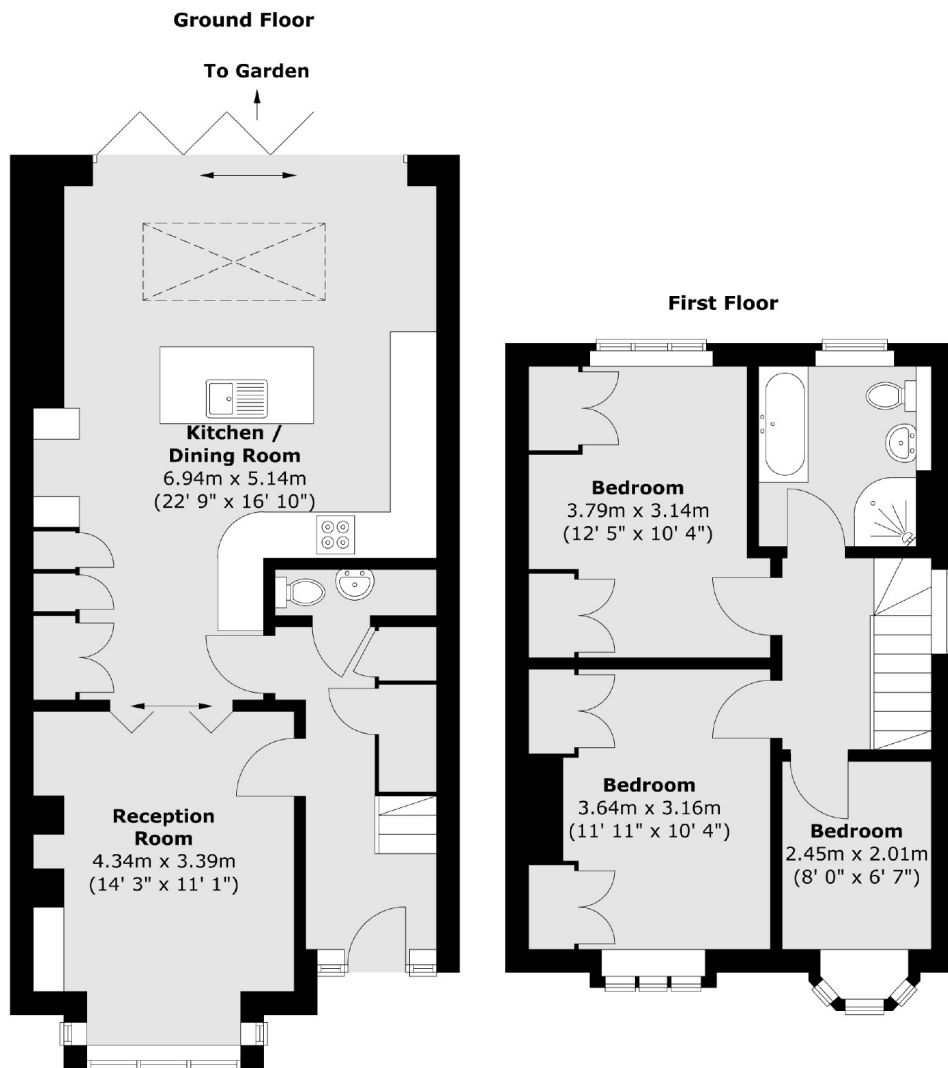
- Three Bedrooms
- Refurbished Throughout To The Highest Of Standards
- Fantastic Size Garden
- Great Location
- Landscaped Garden



Herbert Road, KT1



# Herbert Road, Kingston Upon Thames, KT1



Total area (approx.) : 95.6 sq. m (1029 sq. ft)