



Heol Johnson, £240,000

- Three Bedroom Semi Detached House
- Landscaped Rear Garden
- Fully Renovated Throughout
- Utility Space with WC
- Beautifully Presented Family Home
- Ideal First Time Buy
- EPC Rating: Awaiting



 3  1  2



About the property

Discover your dream home in the heart of Talbot Green with this stunning three-bedroom semi-detached house, meticulously renovated to offer modern living at its finest. Step inside to find a beautifully designed interior that boasts a contemporary kitchen equipped with integrated appliances, perfect for culinary enthusiasts. The spacious dining room at the front of the property provides an inviting space for family meals and entertaining guests, while the cosy lounge features elegant French doors that seamlessly connect to the landscaped rear garden, creating an ideal setting for relaxation and outdoor gatherings.

This property is not just about aesthetics; it's packed with practical features that enhance everyday living. The utility room, complete with a convenient downstairs WC, adds functionality to the home, making laundry days a breeze. With cavity wall insulation, new windows, and doors, you can enjoy energy efficiency and comfort year-round. The full Hive heating system ensures you have complete control over your home's temperature, while ample storage throughout the house means you can keep your living spaces clutter-free and organised.

The three generous-sized bedrooms provide plenty of room for family members or guests, ensuring everyone has their own personal retreat. No expense or thought has been spared in the renovation of this property, making it a true gem in the area. Located within close proximity to shops, schools, and amenities,

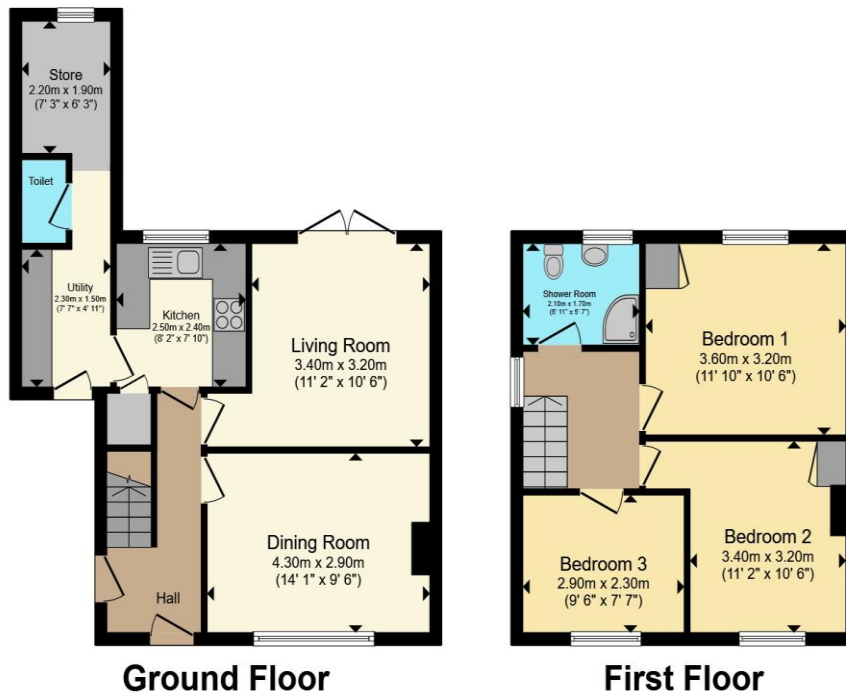


Accommodation

01443 222851

talbotgreen@peteralan.co.uk

Floorplan



Total floor area 85.0 m² (915 sq.ft.) approx

This floor plan is for illustrative purposes only. It is not drawn to scale. Any measurements, floor areas (including any total floor area), openings and orientation are approximate. No details are guaranteed, they cannot be relied upon for any purpose and they do not form part of any agreement. No liability is taken for any error, omission or misstatement. A party must rely upon its own inspection(s). Powered by www.propertybox.io



Important Information

Note while we endeavour to make our sales details accurate and reliable, if there is any point which is of particular interest to you, please contact the office and we will be pleased to confirm the position for you. We have not personally tested any apparatus, equipment, fixtures, fittings or services and cannot verify they are in working order or fit for their purposes. Nothing in these particulars is intended to indicate that carpets or curtains, furnishings or fittings, electrical goods (whether wired or not). Gas fires or light fittings or any other fixtures not expressly included form part of the property offered for sale. This computer generated Floorplan, if applicable, is intended as a general guide to the layout and design of the property. It is not to scale and should not be relied upon for dimensions. Tenure: We cannot confirm the tenure of the property as we have not had access to the legal documents. The buyer is advised to obtain verification from their solicitor or surveyor.

Peter Alan Limited is registered in England and Wales under company number 2073153, Registered Office is Cumbria House, 16-20 Hockliffe Street, Leighton Buzzard, Bedfordshire, LU7 1GN. VAT Registration Number is 500 2481 05. For activities relating to regulated mortgages and non-investment insurance contracts, Peter Alan Limited is an appointed representative of Connells Limited which is authorised and regulated by the Financial Conduct Authority. Connells Limited's Financial Services Register number is 302221. Most buy-to-let

