



Sutherland Avenue, W9

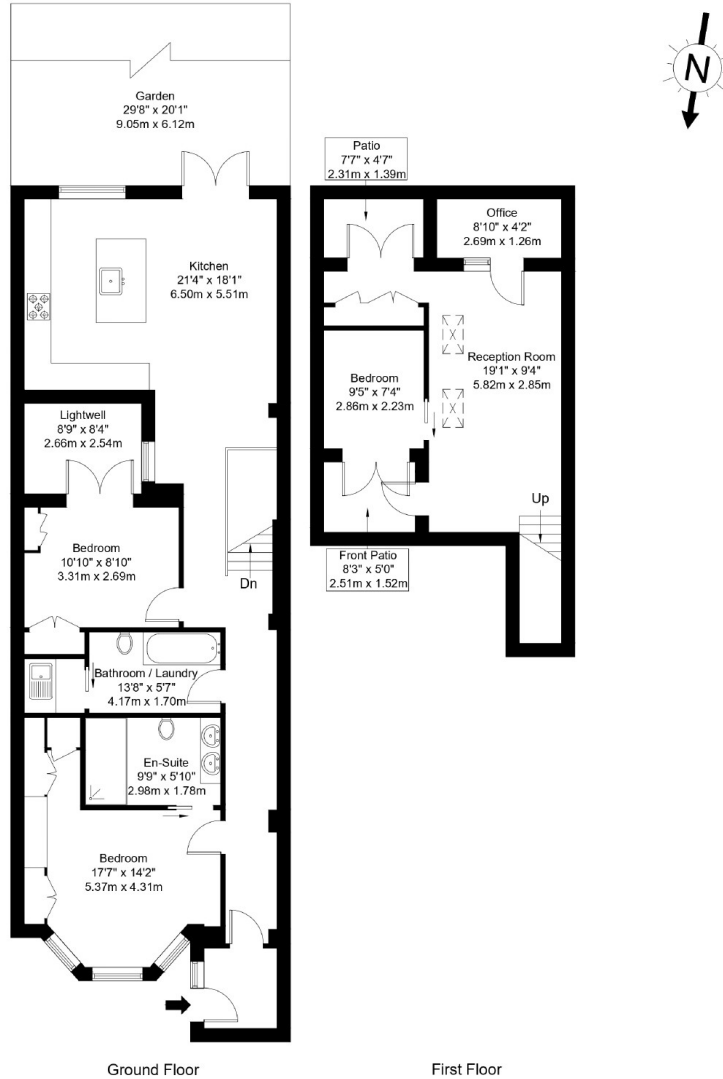
£1,250,000

3 2 2 C

- Charming garden apartment
- Large south facing garden
- Unrivalled location

Sutherland Avenue, W9 2HE

Approx Gross Internal Area = 124.07 sq m / 1335 sq ft



Ref :

Copyright **BLEU PLAN**

The Floor plan is not to scale and measurements and areas shown are approximate and therefore should be used for illustrative purposes only. The plan has been prepared in accordance with the RICS code of Measuring Practice and whilst we have confidence in the information produced it must not be relied on. Maximum lengths and widths are represented on the floor plan. If there is any aspect of particular importance, you should carry out or commission your own inspection of the property.
Copyright @ BleuPlan

Marsh & Parsons Little Venice

35 Maida Vale, Maida Vale,
W9 1TP
020 7993 3050