

3 Bed House - Detached

The Barn, 27 Ashbourne Road, Blackbrook, Belper DE56 2LD
Offers Around £649,950 Freehold

 3  3  2  D

Fletcher
& Company

www.fletcherandcompany.co.uk

- Detached Barn Conversion - No Chain Involved
- Countryside Views
- Living Room with Feature Wood Burning Stove
- Fitted Kitchen/Diner & Utility Room
- Garden Room & Study
- Three Bedrooms
- Fitted En-suite & Fitted Bathroom
- Delightful Gardens with Greenhouse
- Driveway & Garage Space (Subject to Planning Permission)
- Ecclesbourne School Catchment Area

ECCLESBOURNE SCHOOL CATCHMENT AREA - This beautiful three bedroom detached barn offers a unique blend of rustic elegance and modern comfort, offered for sale with no chain involved.

The Location

Blackbrook is a small hamlet located within easy reach of Belper which provides an excellent range of amenities including a supermarket, shops, education at all levels, railway station, public houses, restaurant and recreational facilities.

The village of Duffield is some three miles to the south and the city of Derby is approximately eight miles to the south. The famous market town of Ashbourne, known as the Gateway to Dovedale and the Peak District National Park, lies approximately eleven miles to the west. The nearby countryside provides some delightful scenery and walks along the River Derwent.

Accommodation

Ground Floor

Entrance Hall

The property can be entered via a solid timber door to the front elevation leading into a welcoming entrance hall with oak flooring, exposed feature brick and stone walls, two central heating radiators, staircase leading to the first floor landing with useful under-stairs storage area and timber doors leading through to:

Cloakroom/WC

Fitted with a two-piece suite comprising low level WC, pedestal wash handbasin with complementary tiling to splash-back areas, tiled flooring, central heating radiator and an obscured glass double glazed window to the side elevation.

Living Room

16' x 13'3" (4.88m x 4.04m")

A well proportioned living room having the advantage of a feature fireplace incorporating a wood burning stove on a glass hearth, Oak flooring, exposed beams to ceiling with recessed ceiling spotlights, central heating radiator, two double glazed windows to the front elevation, further window to the side and glazed doors leading out onto the rear landscaped gardens.



Study/Bedroom Four

11'4" x 7'11" (3.45m" x 2.41m")

This versatile reception room can be used for either a study, formal dining space or additional bedroom with a feature exposed brick wall, timber beam to ceiling with recessed ceiling spotlights, quality Oak flooring, central heating radiator and a double glazed window to the rear elevation.



Garden Room

22'6" x 10'3" maximum (6.86m" x 3.12m" maximum)

This beautiful garden room provides a fantastic asset to the home and a versatile space suitable for both seating and dining with lovely views across the landscaped gardens, built from a timber double glazed construction with brick base and pitched tiled roof, having quality tiled flooring with underfloor heating, exposed feature brick wall, recessed ceiling spotlights and timber double glazed French doors leading out onto the garden with a glazed apex over.



Kitchen/Diner

23'8" x maximum x 14'6" maximum (7.21m" x maximum x 4.42m" maximum)

This stunning handmade bespoke fitted kitchen has a matching range of base eye-level and drawer units with polished granite worksurface over incorporating a porcelain sink unit with Swan neck mixer tap and complementary matching granite upstand, feature island unit with continued base cupboards, granite worktop and breakfast bar, appliances include a four ring induction hob with extractor fan over, integrated electric fan assisted eye-level oven with combination microwave over, integrated fridge, freezer and dishwasher, exposed beam to ceiling, central heating radiator, double glazed windows to both front and rear elevations and quality tiled flooring continuing into the dining area with a part vaulted ceiling incorporating two Velux windows, recessed ceiling spotlights, exposed brick walling, further central heating radiator, timber door to the utility room and double glazed French doors leading out onto the garden, providing an ideal space for outdoor dining.



Kitchen/Diner



Utility Room

11'9" x 4'11" (3.58m" x 1.50m")

Fitted with a range of base units with quality granite worksurface over incorporating a stainless steel sink unit with single draining board and taps over, complementary tiled splash-back, plumbing for automatic washing machine, space for tumble dryer, recessed ceiling spotlights, central heating radiator, quality tiled flooring and double glazed window to the front elevation.

First Floor

Landing

On the first floor landing is a continuation of the Oak flooring, airing cupboard providing useful storage space, access to loft and Oak latched doors leading through to:

Bedroom One

15'11" maximum x 13'4" maximum (4.85m" maximum x 4.06m" maximum)

A well proportioned master bedroom having a feature part-vaulted ceiling with exposed timber beams, Oak flooring, central heating radiator, recessed ceiling spotlights, double glazed window to front, skylight window to rear and Oak latched door to:



En-Suite Shower Room

5'6" x 5'2" (1.69 x 1.60)

Comprising of a single shower enclosure with electric shower, pedestal wash handbasin, low level WC, central heating radiator, tiled walls, tiled flooring, extractor fan and period exposed beams.

Bedroom Two

14'5" x 10'11" (4.40 x 3.34)

Again, a generous sized room with part vaulted ceiling and exposed timber beams, central heating radiator, recessed ceiling spotlights, feature arched window to the side, further window to the front elevation and Oak latched door.



Bedroom Three

10'1" x 7'8" (3.08 x 2.34)

Having fitted wardrobes with display shelving, character ceiling with exposed timber beams, central heating radiator, recessed ceiling spotlights and a Velux style window.

Bathroom

7'7" x 6'11" (2.33 x 2.11)

A period style bathroom with a white suite comprising freestanding roll top bath with claw feet and hand shower attachment, pedestal wash handbasin with hot and cold taps, low flush WC, mirrored medicine cabinet, Heritage style radiator, part tiled walls, attractive floor tiling, inset ceiling spotlighting, extractor fan to ceiling, exposed timber beams, Velux style window and Oak latched door.



Gardens

A major asset to this property is its beautiful, well maintained landscaped gardens enjoying abutting open fields offering fine countryside views, featuring extensive laid lawn with planted shrubs, bushes, trees and paved patio area providing a ideal sitting out and entertaining space, enjoying the idyllic pond.



Driveway

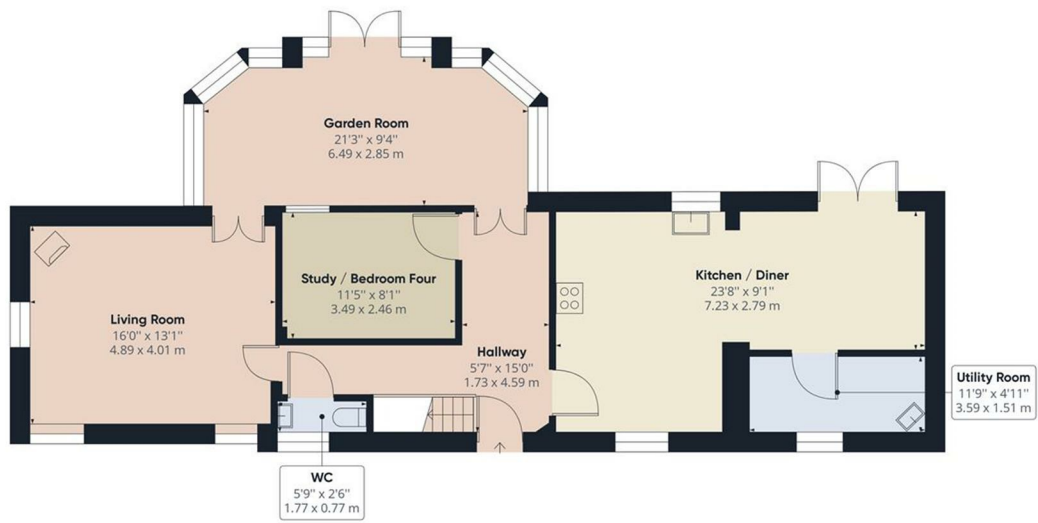
A block paved driveway provides off road parking and leads to the front entrance door with wrought iron gated access to the side of the property to the rear garden.



Garage Space

Subject to planning. PLEASE NOTE: Planning was passed (now lapsed) for the erection of a single storey garage under permitted development. For further details please visit the Amber Valley Planning portal using Ref: AVA/2013/0183

Council Tax Band E - Amber Valley



Approximate total area⁽¹⁾
 1000.13 ft²
 92.92 m²

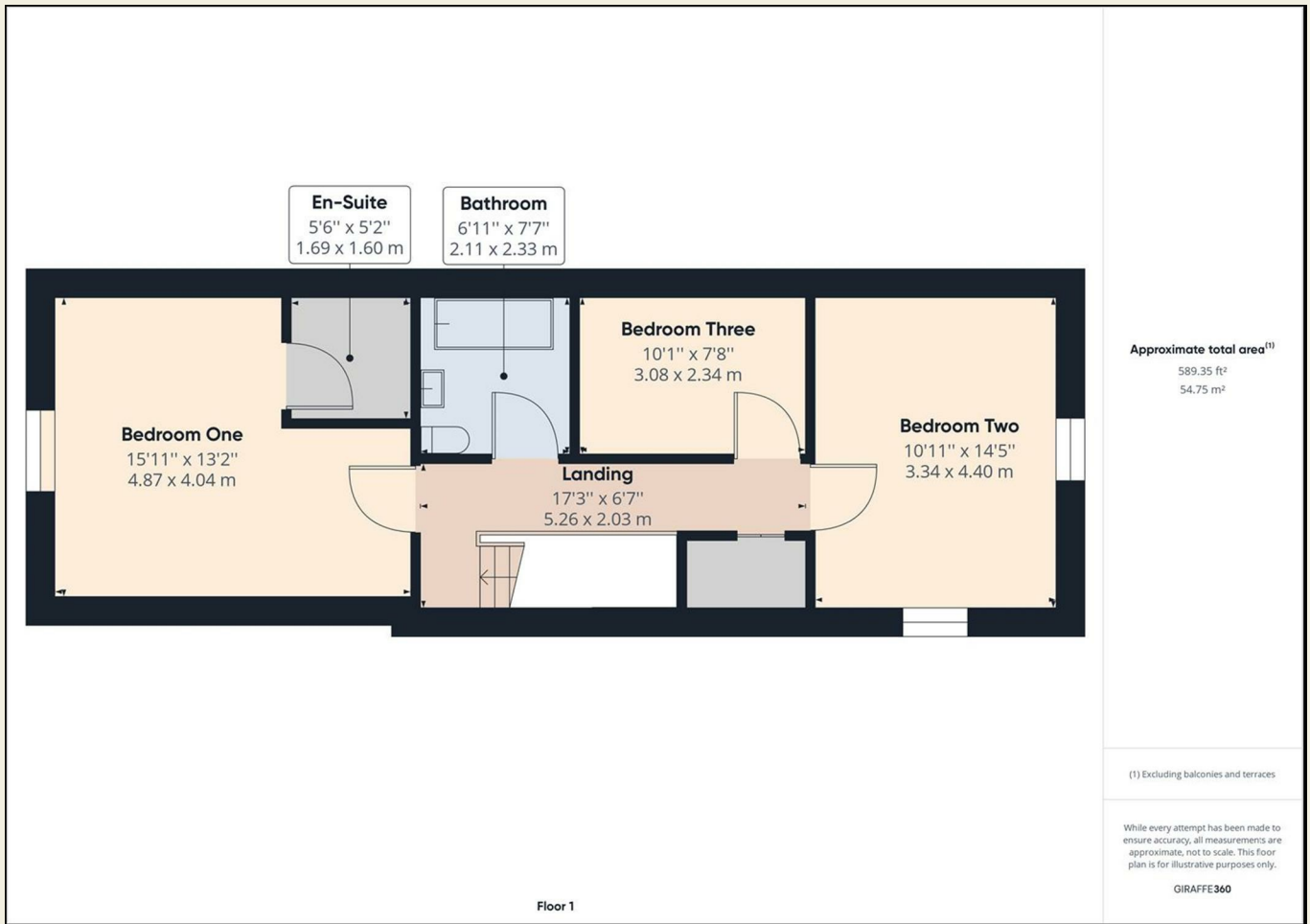
(1) Excluding balconies and terraces

While every attempt has been made to ensure accuracy, all measurements are approximate, not to scale. This floor plan is for illustrative purposes only.

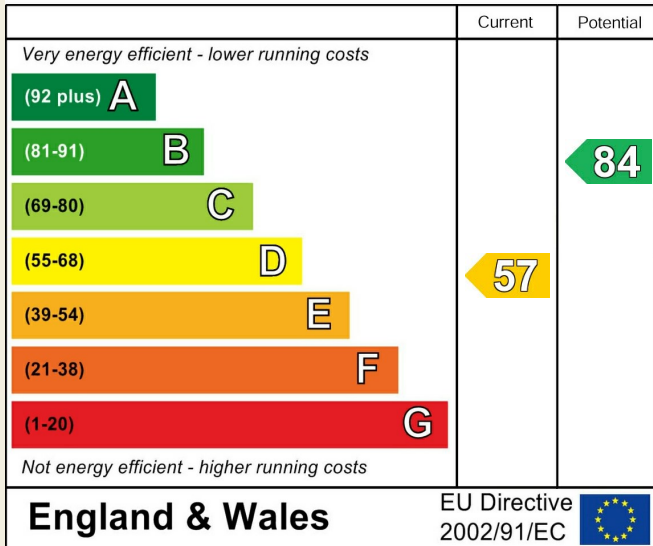
GIRAFFE 360

Floor 0

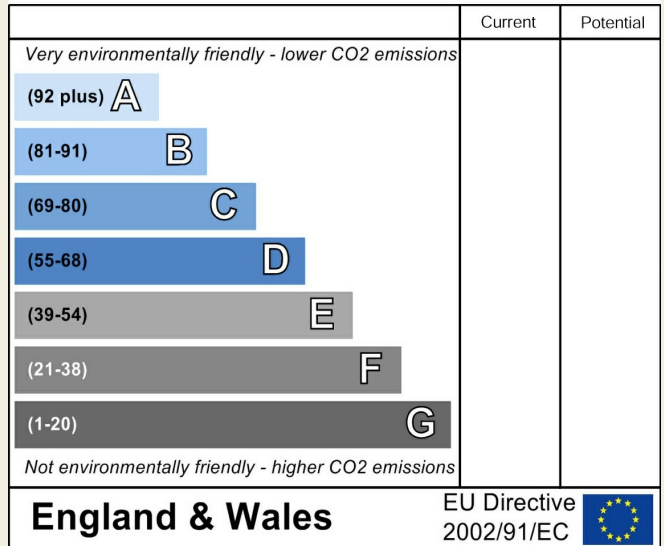
These particulars do not constitute an offer or a contract neither do they form part of an offer or contract. The vendor does not make or give and Messrs. Fletcher & Company nor any person employed has any authority to make or give any representation or warranty, written or oral, in relation to this property. Whilst we endeavour to make our sales details accurate and reliable, if there is any point which is of particular importance to you, please contact the office and we will be pleased to check the information for you, particularly if contemplating travelling some distance to view the property. None of the services or appliances to the property have been tested and any prospective purchasers should satisfy themselves as to their adequacy prior to committing themselves to purchase.



Energy Efficiency Rating



Environmental Impact (CO₂) Rating



These particulars do not constitute an offer or a contract neither do they form part of an offer or contract. The vendor does not make or give and Messrs. Fletcher & Company nor any person employed has any authority to make or give any representation or warranty, written or oral, in relation to this property. Whilst we endeavour to make our sales details accurate and reliable, if there is any point which is of particular importance to you, please contact the office and we will be pleased to check the information for you, particularly if contemplating travelling some distance to view the property. None of the services or appliances to the property have been tested and any prospective purchasers should satisfy themselves as to their adequacy prior to committing themselves to purchase.