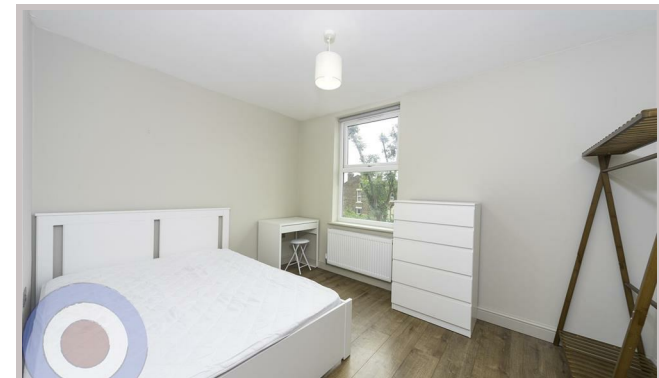
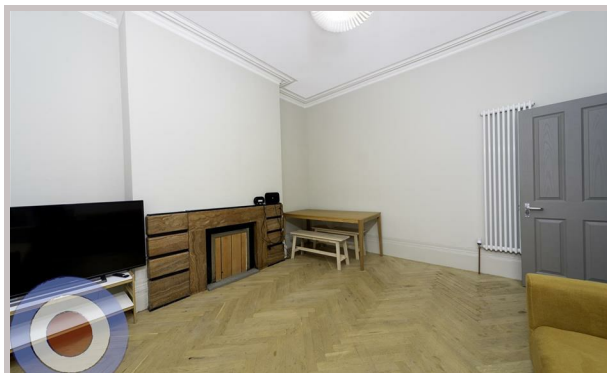




440 Moss Lane East  
Manchester  
M14 4PW



# 440 Moss Lane East

## £680 Per month

STUDENT PROPERTY AVAILABLE ON 01/07/26

£157ppw with bills included

This stunning 9-bedroom period property overlooks Whitworth Park and is perfect for students seeking character, space, and a central location.

Packed with original period features, including the original front door and window shutters, the property also boasts French solid oak parquet flooring throughout. The modern sleek kitchen features quartz countertops, flowing into an open-plan living area with aluminium patio doors that lead to a private garden with Indian stone patio.

The top-floor bathroom is a show-stopper, complete with a freestanding bathtub, offering luxury and style. Situated just a short walk to the university, this property combines period charm with modern conveniences.

No deposit required and communal cleaning included throughout the tenancy.

£680 pppcm

- NO DEPOSIT
- COMMUNAL CLEANING INCLUDED
- ALL DOUBLE BEDROOMS
- ENERGY EFFICIENT HOUSE C OR ABOVE
- OVERLOOKS WHITWORTH PARK

Local Authority  
Manchester City Council

Council Tax Band Exempt

EPC Rating C

Contact

01613992619

hello@welcometomanchesterlettings.com

www.welcometomanchesterlettings.com

