



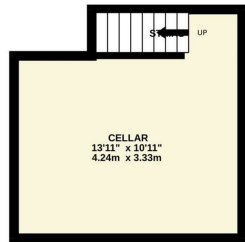
3 Bed
House - Terraced
located
in Woodlesford

Offers over £240,000

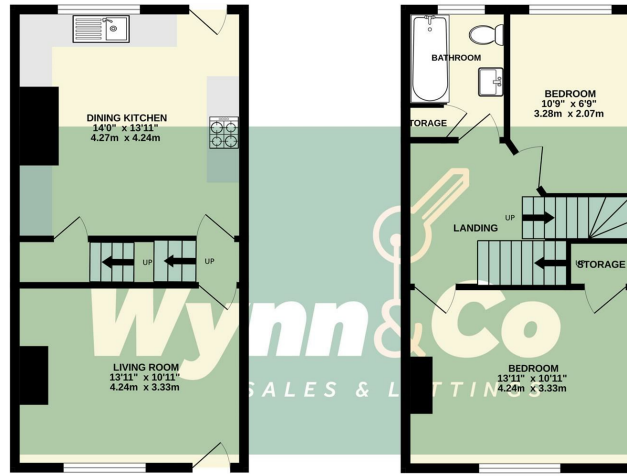


DIRECTIONS

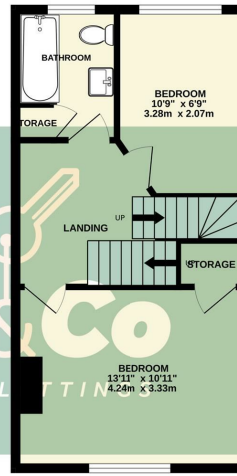
BASEMENT LEVEL
180 sq.ft. (16.7 sq.m.) approx.



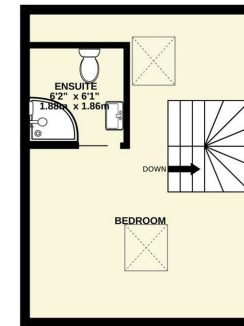
GROUND FLOOR
371 sq.ft. (34.5 sq.m.) approx.



1ST FLOOR
385 sq.ft. (35.8 sq.m.) approx.



2ND FLOOR
266 sq.ft. (24.7 sq.m.) approx.



THREE BEDROOM MID TERRACE HOUSE

TOTAL FLOOR AREA : 1202 sq.ft. (111.6 sq.m.) approx.

Whilst every attempt has been made to ensure the accuracy of the floorplan contained here, measurements of doors, windows, rooms and any other items are approximate and no responsibility is taken for any error, omission or mis-statement. This plan is for illustrative purposes only and should be used as such by any prospective purchaser. The services, systems and appliances shown have not been tested and no guarantee as to their operability or efficiency can be given.
Made with Metropix ©2026

CONTACT

86 Millgate
Ackworth
WF7 7QD

E: sales@wynnandco.co.uk
T: 07901005018

Energy Efficiency Rating		Current	Potential
Very energy efficient - lower running costs			
(92 plus)	A		
(81-91)	B		
(69-80)	C		
(55-68)	D		
(39-54)	E		
(21-38)	F		
(1-20)	G		
Not energy efficient - higher running costs			
England & Wales		EU Directive 2002/91/EC	

Wynn & Co
Sales and Lettings