



Kingsland Road, E8

£675,000

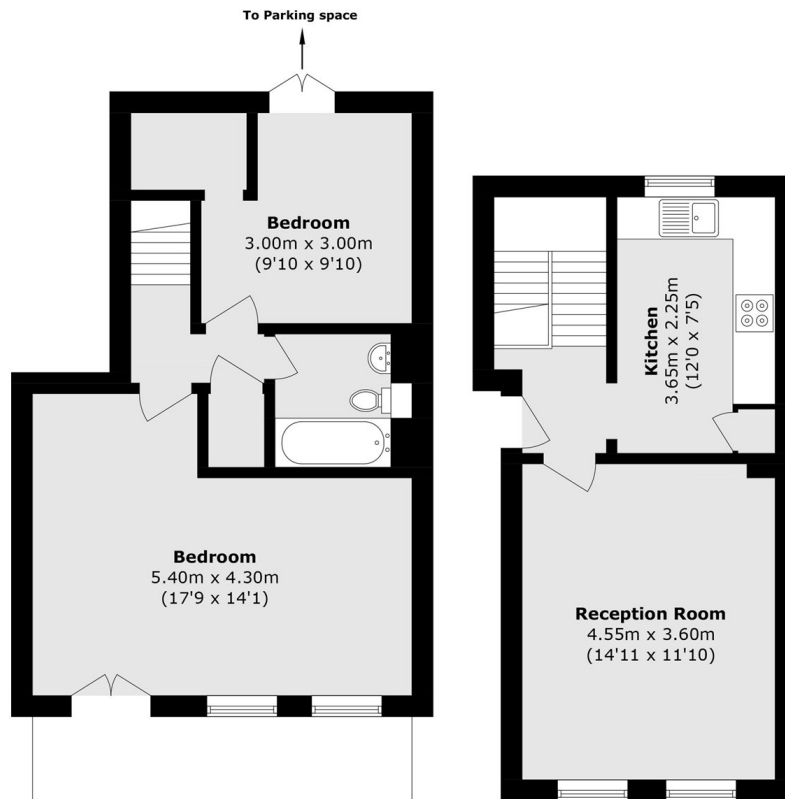
This property is arranged over the ground and lower ground floors of a modern building designed in a period style, offering approximately 753 sq ft of internal space. The layout is well proportioned throughout. Accessed at ground level, the property includes a west-facing reception room. A fitted kitchen is located to the rear of the flat and has space for a breakfast table.

The property is situated within proximity to the amenities of Kingsland Road and Haggerston Overground station, which provides services to Highbury & Islington and Canada Water. Shoreditch, Hoxton, and Dalston are located within approximately one mile. Broadway Market, London Fields, and De Beauvoir Square are also within walking distance.

Features

- Split Level
- Allocated Parking
- Private Outside Space
- Share of Freehold
- Local Amenities
- Transport Links

Kingsland Road, London, E8



Lower Ground Floor

Ground Floor

Total area (approx.): 70.0 sq. m (753.4 sq. ft)