



Windermere Avenue
NW6

FOR SALE
FREEHOLD

£2,399,950

Situated on one of Queen's Park's most sought-after residential streets, just moments from the park itself, this exceptional four-bedroom freehold house offers a rare opportunity to acquire a beautifully extended family home, available chain-free.







The property has been thoughtfully enhanced with both a loft and side extension, creating well-balanced living accommodation across three floors.

The ground floor features an elegant front double reception room with a striking bay window, complemented by a spacious, contemporary eat-in kitchen to the rear, ideal for modern family living and entertaining. Large doors open directly onto a well-maintained south-facing garden, flooding the space with natural light throughout the day.



Upstairs, the first floor offers generously sized bedrooms, including a principal bedroom with a charming front-facing bay window, alongside well-appointed bathrooms.

The loft extension provides additional versatile space, perfect as a guest suite or further bedroom, complete with its own bathroom.

In total, the house comprises four bedrooms and three bathrooms, finished to a high standard throughout, blending period character with modern design.

Early viewing is highly recommended.





- Four-bedroom freehold family house
- Located on a prime residential street in Queen's Park
- Offered chain-free
- Extended with both loft and side extensions
- Arranged over three floors with well-balanced living space
- Double reception room with bay window
- Spacious modern eat-in kitchen with direct garden access
- South-facing private garden with excellent natural light
- Close to park, local amenities, and excellent transport links
- COUNCIL: Brent (F)



Windermere Avenue, London, NW6

Approximate Area = 1867 sq ft / 173.4 sq m

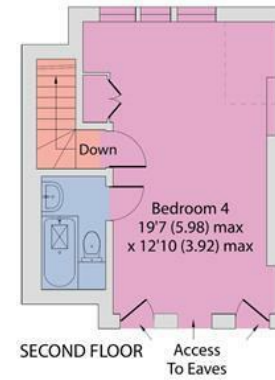
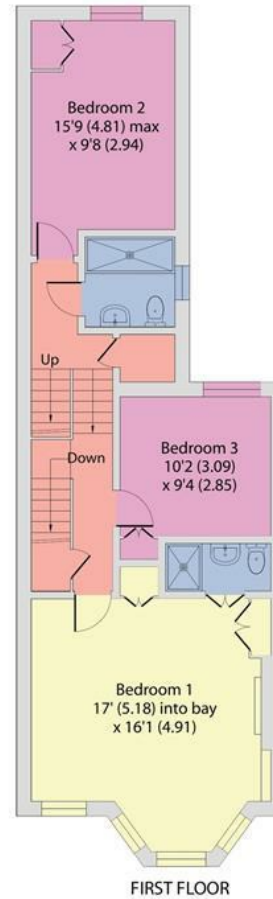
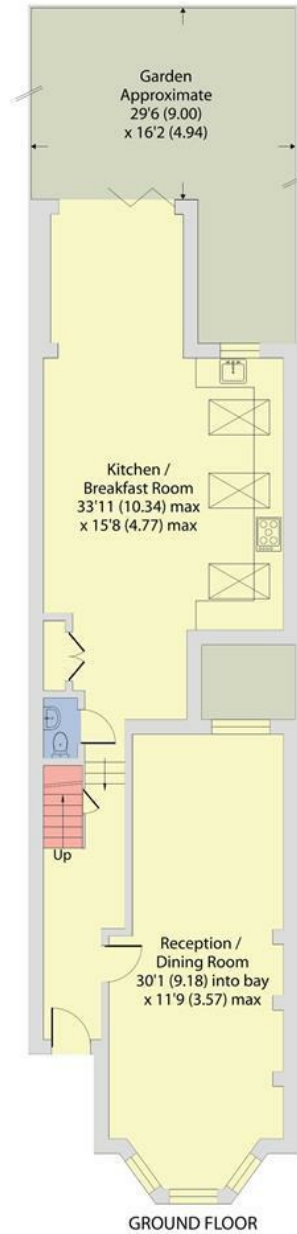
Limited Use Area(s) = 19 sq ft / 1.7 sq m

Total = 1886 sq ft / 175.1 sq m

For identification only - Not to scale



Denotes restricted head height



Approx 1886.00 sq ft

EPC: C

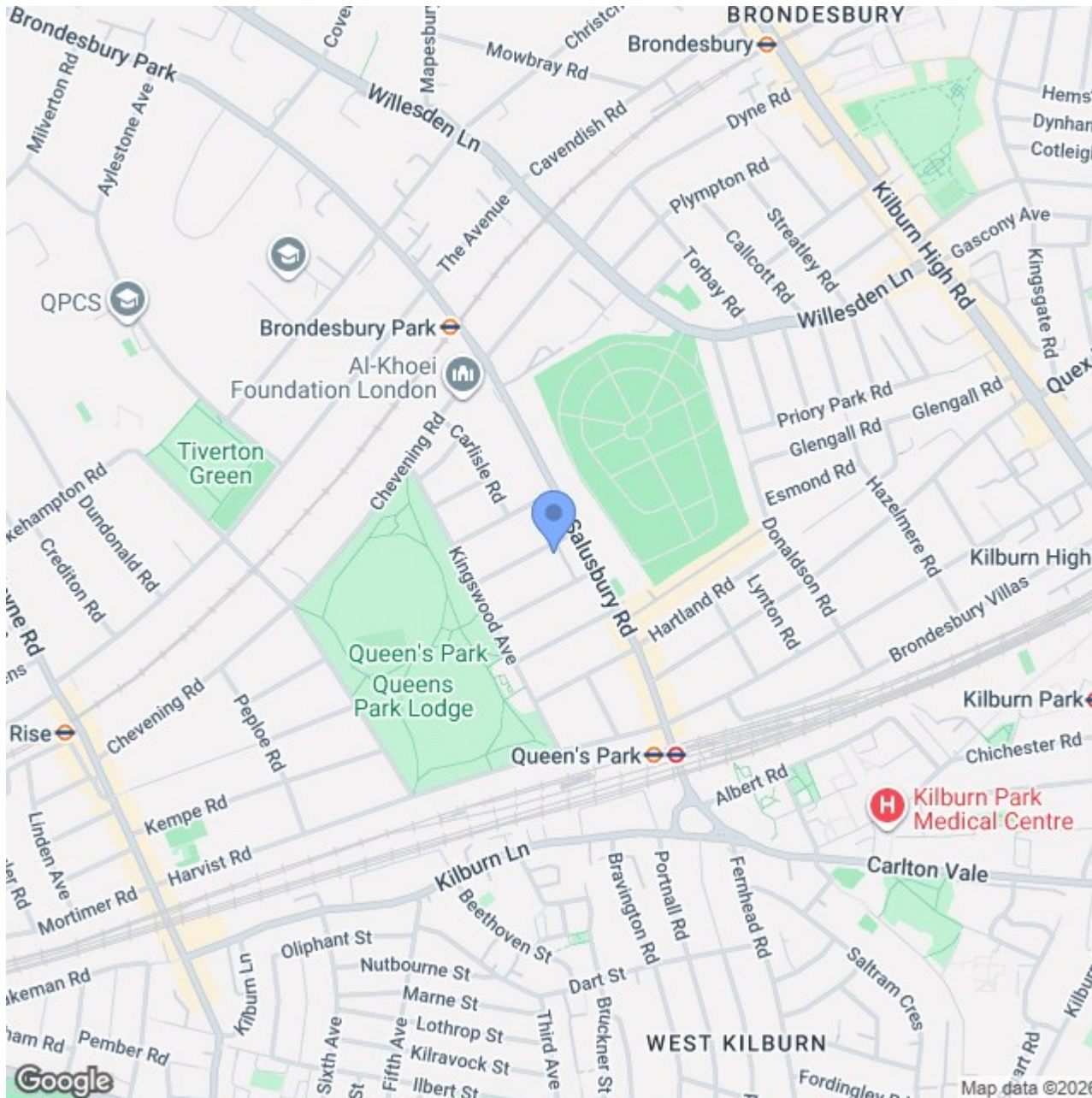
Brent (F)

Ref: 19694321

Floor plan produced in accordance with RICS Property Measurement 2nd Edition, Incorporating International Property Measurement Standards (IPMS2 Residential). © nrichcom 2026. Produced for Camerons Stiff & Co. REF: 1430391

Location

Ideally located just off Queen's Park, the property benefits from immediate access to the park's open green spaces, tennis courts, and leisure facilities, as well as the vibrant local amenities along Salusbury Road, including independent cafés, restaurants, and boutique shops. Excellent transport links are nearby, with Queen's Park station (Bakerloo Line and Lioness Line) providing swift access into Central London and beyond, making this an ideal home for both families and commuters alike.



020 7328 2828 * 020 8459 1133 – Sales

020 8450 9377 – Lettings

enquiries@cameronsstiff.co.uk

cameronsstiff.co.uk

CAMERONS STIFF & Co.
EST. 1982



These particulars are a guide, not an offer contract. Property descriptions, photographs and floor plans are not taken as statements or representations of fact. Although every effort has been taken to ensure measurements, provided are as accurate as possible, they are to be assumed approximate and not to scale. Prospective purchasers must verify the accuracy of the information provided here through private means. Camerons Stiff & Co. does not give any representations or warranties, nor does Camerons Stiff & Co. represent the vendor legally. Camerons Stiff & Co. assume no liability, for any costs, losses or expenses incurred by the vendor or a prospective purchaser relating to any transaction regarding this property.

©Camerons Stiff & Co. 2025 All rights reserved.

