



Cock Lane, EC1A

£750,000

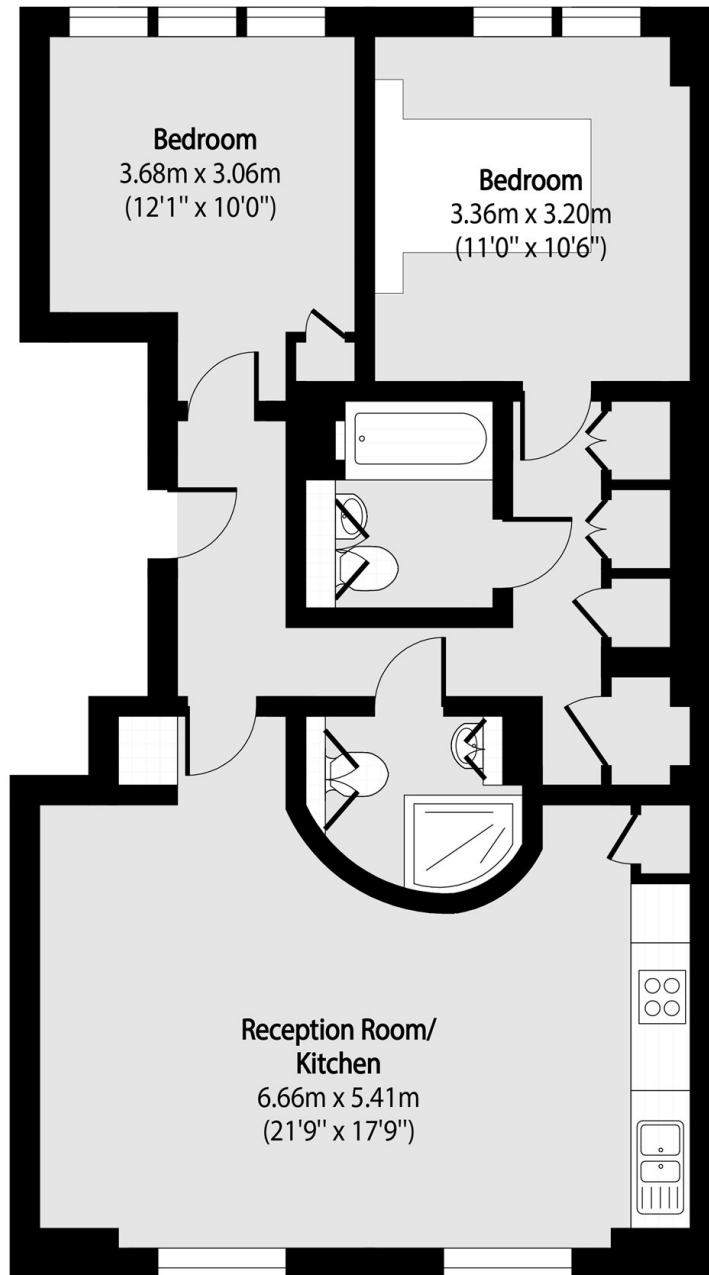
A well-presented, bright, two double bedroom apartment in the heart of West Smithfield. The apartment comprises a spacious open-plan living and kitchen, a contemporary family bathroom, two double bedrooms.

Cock Lane is a short distance from West Smithfield, which offers a variety of local pubs, wine bars and Michelin starred restaurants. Residents benefit from superb transport links, with Barbican, Farringdon and St Paul's stations close by. The Elizabeth line has cut journey times to Canary Wharf to approximately eight minutes and Heathrow airport to thirty minutes.

Features

- Two Double Bedrooms
- Two Bathrooms
- High Spec Finish
- Close to West Smithfield
- Good Transport Links

Cock Lane,
London, EC1A



Second Floor

Total area (approx): 74.02 sq m (797 sq. ft)