



## 3 bedroom Semi-Detached House located in Dovercourt.

Guide Price  
£240,000 - £250,000

Find us on..



**JOHN ALEXANDER**  
ESTATE AGENTS



# Long Meadows Dovercourt CO12 4US

## FULL DESCRIPTION

### THE OVERVIEW

\*\*\*Guide Price Of £240,000 - £250,000\*\*\*

Presenting this three-bedroom semi-detached home, boasting off-road driveway parking, a beautifully kept garden, and generous living spaces designed for both comfort and convenience.

### THE HOME

Upon entering, you are greeted by an inviting hallway that leads to the ground floor rooms. The lounge offers a comfortable space to relax and unwind, while the neatly maintained kitchen/dining area provides ample worktop space for culinary needs. A bright conservatory adds extra living accommodation and opens directly onto the garden. Completing the ground floor is a convenient downstairs WC.

Upstairs offers three well-proportioned bedrooms, with the third being the smallest. A family bathroom, complete with a bath and overhead shower, is also located on this floor.

### KITCHEN/DINER

13' 4" x 11' 5" (4.08m x 3.48m)

### LOUNGE

13' 4" x 11' 9" (4.08m x 3.59m)

### CONSERVATORY

10' 11" x 6' 7" (3.33m x 2.01m)

### CLOAKROOM

### BEDROOM ONE

11' 7" x 10' 4" (3.55m x 3.17m)

### BEDROOM TWO

11' 7" x 10' 4" (3.55m x 3.17m)

### BEDROOM THREE

8' 10" x 8' 8" (2.70m x 2.65m)

### BATHROOM

### THE OUTSIDE

The exterior is attractively presented, with a front driveway providing convenient off-road parking. The rear garden offers a low-maintenance design, featuring a small lawn area and predominantly paved patio, along with gated access.

### THE LOCATION

Nestled in a peaceful and welcoming residential area, this home enjoys close proximity to local schools and is just a short stroll from the charming Dovercourt's seafront.



3



1



2



B



EPC

C





## FLOORPLAN

### Long Meadows

Approximate Gross Internal Area = 97.7 sq m / 1051 sq ft

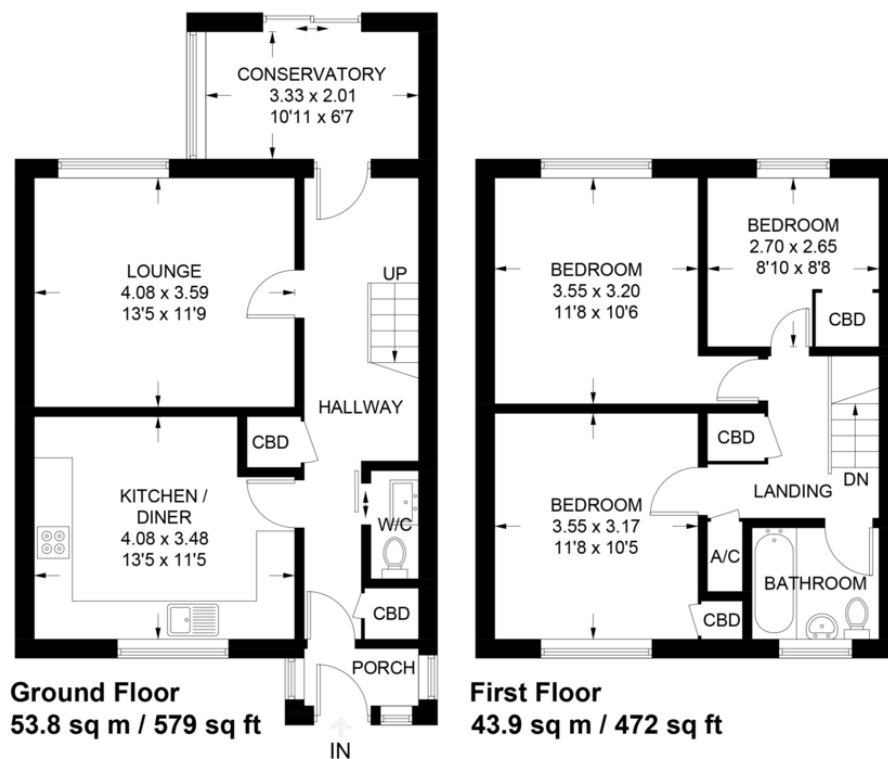


Illustration for identification purposes only,  
measurements are approximate, not to scale.

## DIRECTIONS

### CONTACT

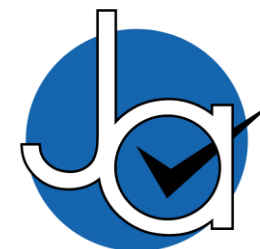
**288 High Street**  
**Harwich**  
**Essex**  
**CO12 3PD**

E [enquiries@john-alexander.co.uk](mailto:enquiries@john-alexander.co.uk)

T 01255 520007

[www.john-alexander.co.uk](http://www.john-alexander.co.uk)

Find us on..



**JOHN ALEXANDER**  
ESTATE AGENTS