



## Rousden Street, NW1

£980 Per week

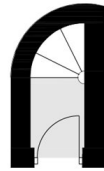
An architect designed four-bedroom property benefiting from a practical layout with thoughtful design features ideal for modern day living. Set over the first, second and third floors of a Georgian terraced house, the property comprises a stunning spiral staircase, two bathrooms, large terrace and an open-plan kitchen/dining/reception set over the top floor featuring a glass roof and bi-fold doors.

Located on Rousden Street, which is located within very close proximity to Camden Road rail and Camden Town tube, and many local amenities.

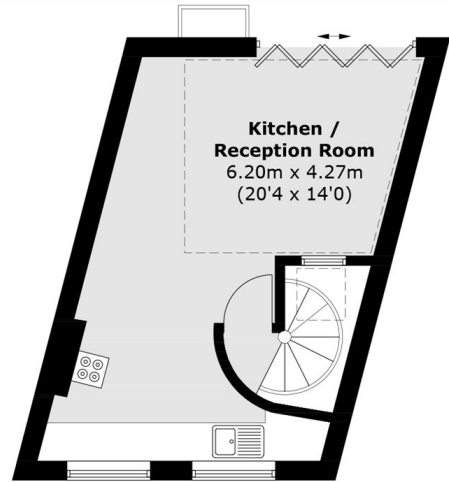
### Features

- Four bedrooms
- Architect designed
- Period building
- Roof Terrace
- Superb location
- Close To Tube

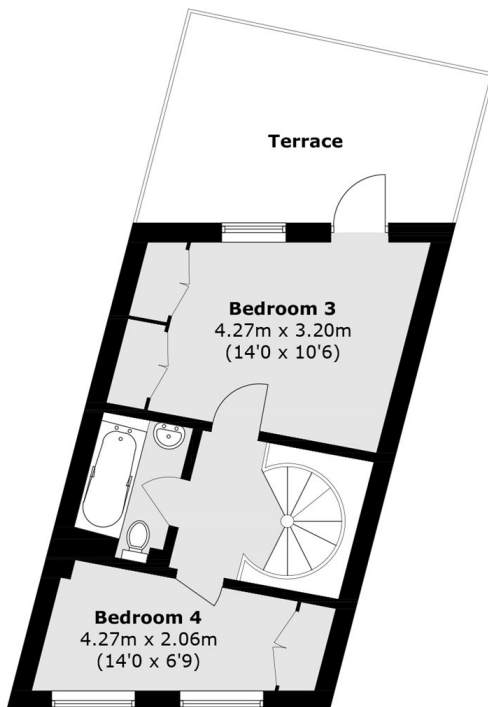
Rousden Street,  
London, NW1



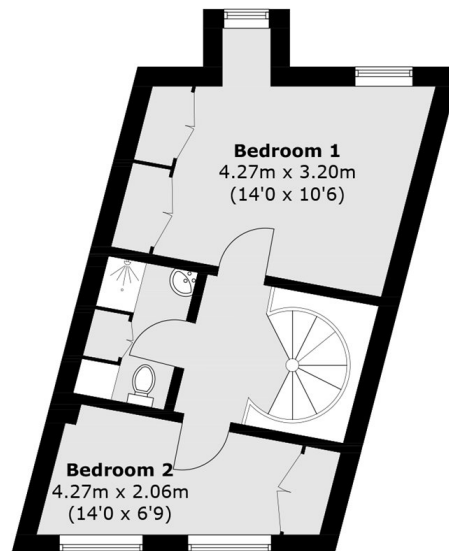
**Ground Floor**



**Third Floor**



**First Floor**



**Second Floor**

Total area (approx.): 87.8 sq. m (945.0 sq. ft)  
Terrace area / External (approx.): 14.2 sq. m (152.8 sq. ft)