



Guide Price
£375,000

Freehold

4x  2x  2x 

**Westmount Avenue,
Chatham, Kent, ME4**

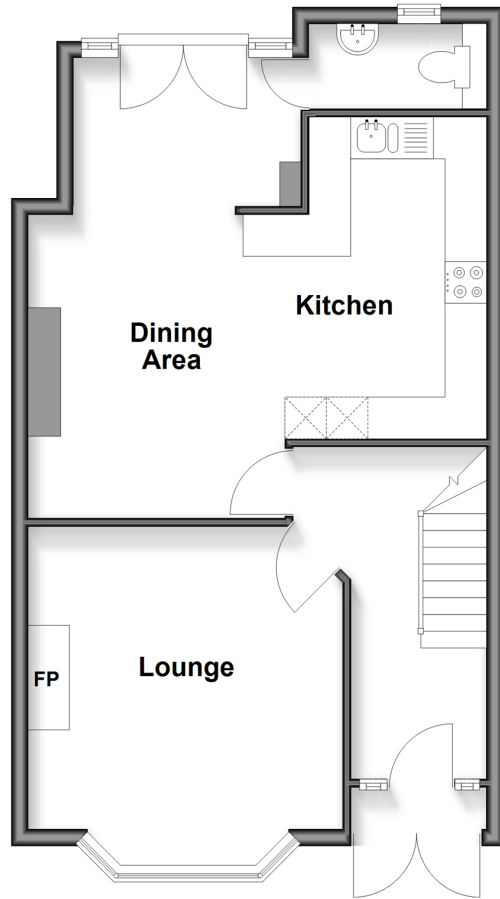
OVER 60?

Secure this property
for up to **59% less!**

Wards
Helping you move forwards

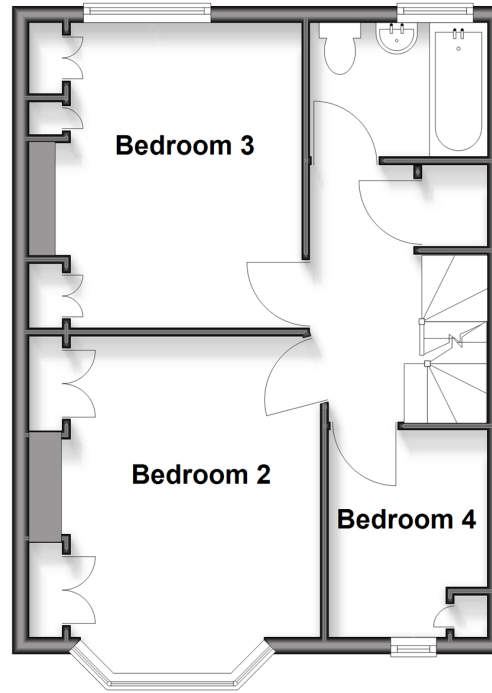
Ground Floor

Approx. 51.3 sq. metres (551.9 sq. feet)



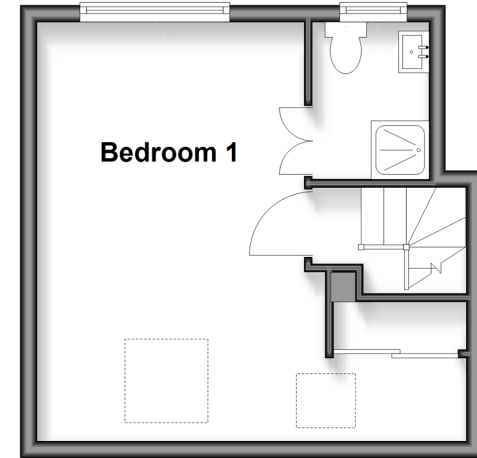
First Floor

Approx. 41.0 sq. metres (441.3 sq. feet)



Second Floor

Approx. 25.1 sq. metres (270.6 sq. feet)



Accommodation

GROUND FLOOR

Entrance Hallway

Lounge: 12'5 x 11'0 (3.79m x 3.36m)

Dining Area: 19'5 x 9'1 (5.92m x 2.77m)

Kitchen: 12'8 x 7'5 (3.86m x 2.26m)

Downstairs Cloakroom

FIRST FLOOR

Landing

Bedroom 2: 14'0 x 9'7 (4.27m x 2.92m)

Bedroom 3: 11'0 x 8'6 (3.36m x 2.59m)

Bedroom 4: 8'2 x 6'4 (2.49m x 1.93m)

Bathroom

SECOND FLOOR

Bedroom 1: 16'8 x 16'5 (5.08m x 5.01m)

En-suite Shower Room

OUTSIDE

Driveway

Rear Garden

Garage to Rear



Main features

- Extended 1930's terraced house in excellent condition
- Ground floor extension with large dining room and downstairs cloakroom
- Beautiful loft extension with bedroom 1 and en-suite shower room
- Driveway to front and garage to rear
- Brilliant location for commuters, 350 yard walk to Railway Station



Nearest Schools

Primary Schools: St Michael's RC Primary 0.1 miles, New Road School and Nursery Unit 0.2 miles
Secondary Schools: St John Fisher Catholic Comprehensive School 0.3 miles, Fort Pitt Grammar School 0.4 miles, Trinity School 0.6 miles



Transport Information

Train Stations: Chatham 0.2 miles, Rochester 1.0 miles, Strood 1.9 miles



Address

Westmount Avenue, Chatham, Kent, ME4



Directions

For directions to this property please contact us.



Wards
Helping you move forwards

Call Chatham Branch 01634 841243 ■ wardsofkent.co.uk



■ If buying to rent, please check if Local Authority licensing schemes apply before proceeding

■ Through a Homewise Home For Life Plan people aged 60+ can secure this property for up to 59% less, by purchasing a Lifetime Lease



10435933/20260615/AP/BC