



Luscombe Maye

Since 1873

3 Washabrook Way,
£259,950

🛏 2 🚿 1 🛋 1



- Two Bedrooms
- Countryside Views
- Entrance Lobby
- No Onward Chain
- Garage And Allocated Parking
- Enclosed Low-Maintenance Courtyard
- Kitchen With Direct Courtyard Access



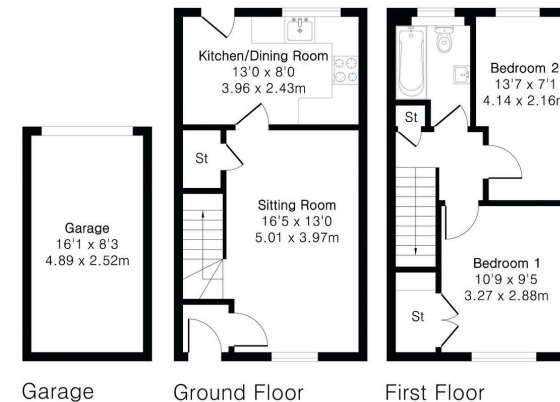


**Approximate Gross Internal Area 646 sq ft - 60 sq m
(Excluding Garage)**

Ground Floor Area 323 sq ft – 30 sq m

First Floor Area 323 sq ft – 30 sq m

Garage Area 133 sq ft – 12 sq m



A two-bedroom home with attractive countryside views, an enclosed low-maintenance courtyard, garage and allocated parking, offered to the market with no onward chain.

