



THE
PROPERTY
QUARTER



92 Redoubt Close, Hitchin, SG4 0FS
£230,000



92 Redoubt Close, Hitchin, SG4 0FS

£230,000

We are extremely pleased to offer this light and modern Two Bedroom apartment situated on the top floor of a well maintained purpose built block.

The interior accommodation has just been fully refurbished by the owners and now includes a new, fully fitted kitchen and luxury shower room.

Additional benefits include newly installed heating , new carpets and redecorated throughout. Sold with a brand new lease and with zero ground rent this apartment would be ideal for both first time buyers and rental investors alike.



Features

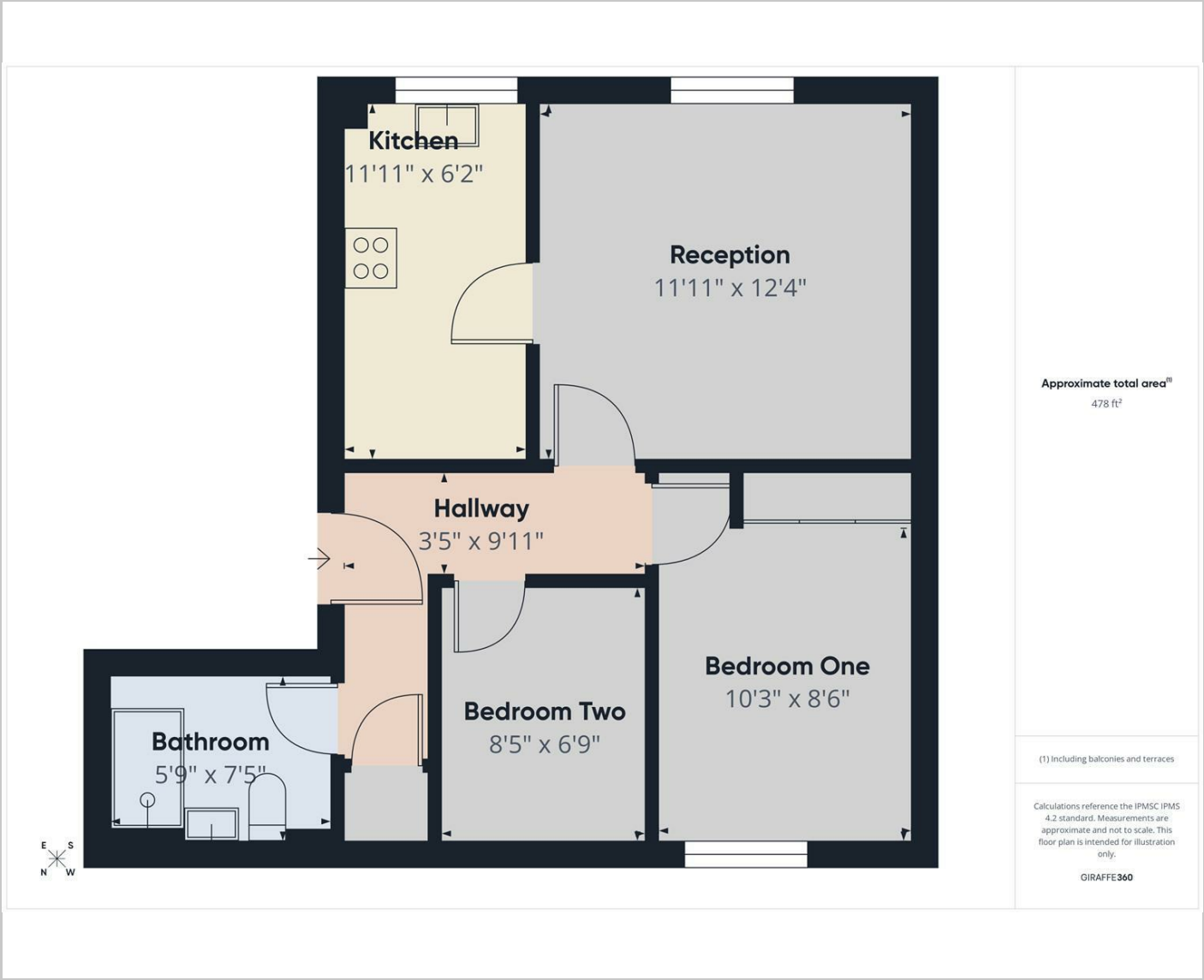
- Two Bedrooms
- Top Floor
- Newly Renovated
- Brand New Fully Fitted Kitchen
- Modern Shower Room
- Ample Off Street Parking
- New 150 Year Lease
- Close to Mainline Station.



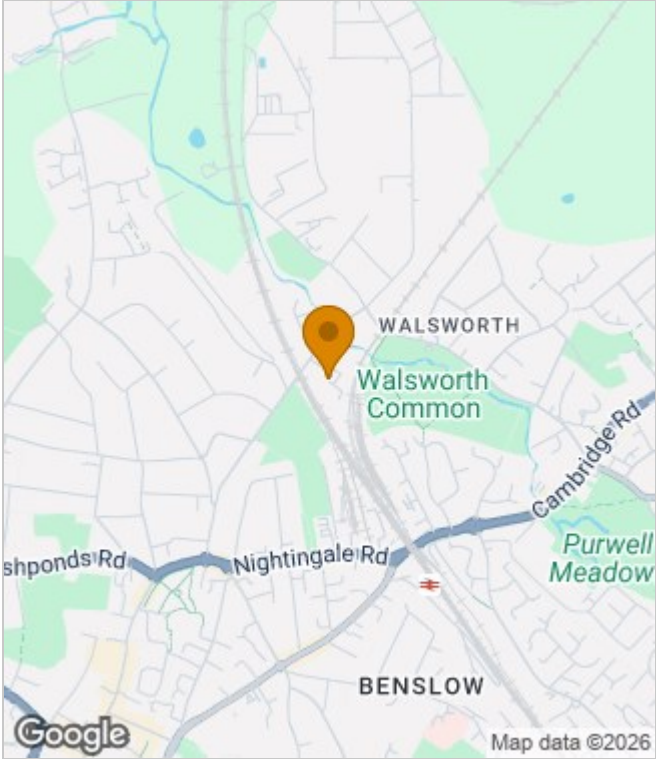
Council Tax Band: B
Floor Area: 581.26 sq ft
EPC Rating: B
Tenure: Leasehold



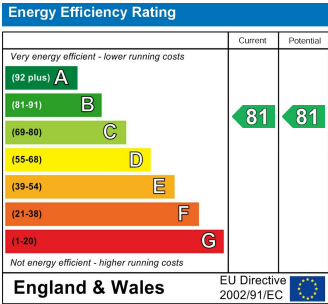
Floor Plans



Area Map



Energy Performance Graph



These particulars, whilst believed to be accurate are set out as a general outline only for guidance and do not constitute any part of an offer or contract. Intending purchasers should not rely on them as statements of representation of fact, but must satisfy themselves by inspection or otherwise as to their accuracy. No person in this firms employment has the authority to make or give any representation or warranty in respect of the property.