



OVER 60?

Secure this property
for up to **59% less!**

Price

£200,000

Leasehold

4x  2x  2x 

**Sandown Road,
Sandown, Isle of Wight,
PO36**

Pittis 
Helping you move forwards



Main features

- Large family house with private garden
- Situated on a main bus route and close to schools
- Spacious rooms throughout and 2 shower rooms
- Perfect home with flexibility to arrange the living accommodation

Accommodation

GROUND FLOOR

Hallway

Lounge: 16'4 x 15'6 (4.98m x 4.73m)

Bedroom 1: 12'6 x 9'4 (3.81m x 2.85m)

Bedroom 2: 12'3 x 9'5 (3.74m x 2.87m)

Conservatory: 14'7 x 9'6 (4.45m x 2.90m)

Shower Room 1

Study: 8'4 x 8'3 (2.54m x 2.52m)

Kitchen: 12'2 x 9'5 (3.71m x 2.87m)

FIRST FLOOR

Landing

Bedroom 4: 9'4 x 8'9 (2.85m x 2.67m)

Bedroom 3: 12'1 x 9'4 (3.69m x 2.85m)

Shower Room 2

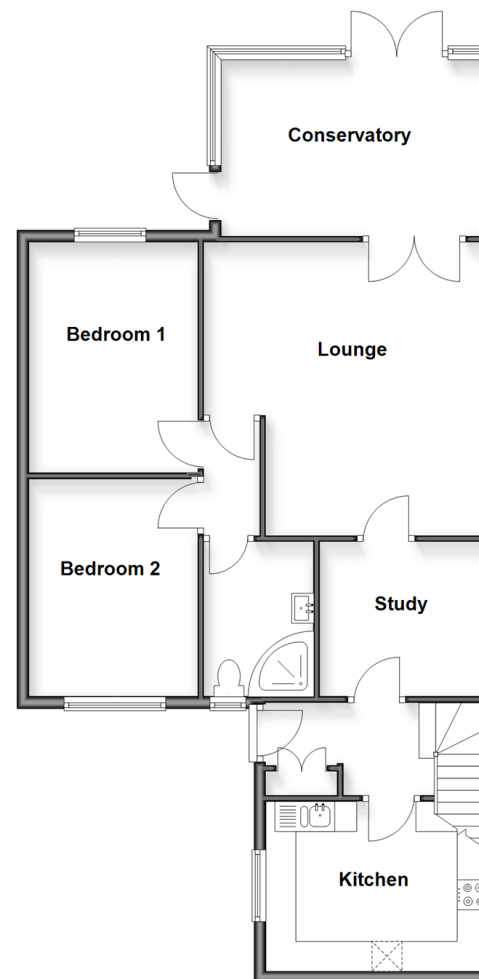
OUTSIDE

Driveway

Front & Rear Garden

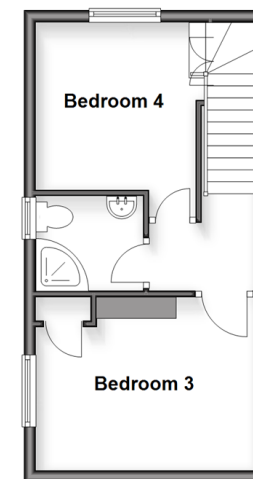
Ground Floor

Approx. 88.8 sq. metres (955.6 sq. feet)



First Floor

Approx. 27.7 sq. metres (298.1 sq. feet)



Call Sandown - 01983 407444 ■ pittis.co.uk

- Legal advice should be taken to verify fixtures/fittings, planning, alterations and/or lease details
- Appliances & services are untested, dimensions are approximate and floor plans are not to scale
- Through a Homewise Home For Life Plan people aged 60+ can secure this property for up to 50% less, by purchasing a Lifetime Lease.



60520910/20251104/JW/JW