



The Quays,
Concordia Street, LS1

ZENKO
CITY LIVING

FOR SALE

£204,950

A TWO BEDROOM APARTMENT WITH CORNER ASPECT AND
BALCONY WITHING THIS RIVERSIDE DEVELOPMENT





















2

Bedrooms

2

Bathrooms

600

Sq. Ft.



ABOUT

A spacious and fully renovated two-bedroom and two-bathroom apartment within The Quays. The Quays is a highly sought-after development on the riverside with an onsite concierge. Its LS1 location puts it in the heart of the city centre within 5 mins walk to the railway station, 6 mins to Victoria Gate and 4 mins to Trinity. (All walking times quoted from Google Maps). It also provides easy access out of the city via major road routes.

CORNER ASPECT

GROUND RENT FIXED AT £250

FLOOR TO CEILING WINDOWS

COUNCIL TAX BAND: E

CONCIERGE

EPC: C

RIVERSIDE DEVELOPMENT

LEASEHOLD

999 YEAR LEASE

VACANT - NO ONWARD CHAIN



ABOUT.. continued

LEASEHOLD INFORMATION:

Length of lease: 999 years from 1999.

Ground rent: £250 per annum

Service charge estimate £3725 per annum

Council Tax - Band E

EPC: C

Heating: Electric wall mounted heaters

Water: Mains connected, via a meter

Electric supply: Mains connected, via metre

Broadband: No issues

Mobile signal: No issues

Flood Risk: None

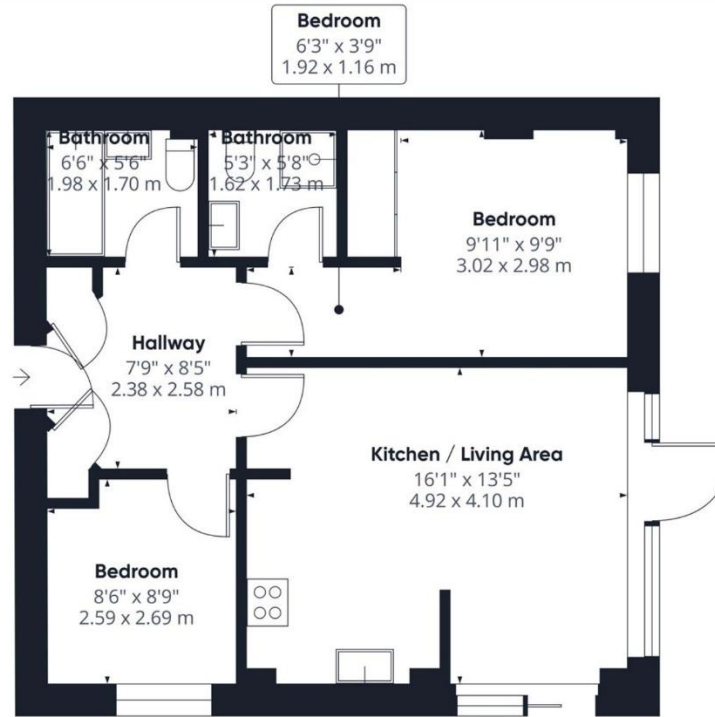
Local Planning Permissions: NA







Floorplan



EPC

| Score | Energy rating | Current | Potential |
|-------|---------------|---------|-----------|
| 92+ | A | | |
| 81-91 | B | | |
| 69-80 | C | 77 C | 79 C |
| 55-68 | D | | |
| 39-54 | E | | |
| 21-38 | F | | |
| 1-20 | G | | |

Lease information

999 from
1999

Lease length

£3725
P.A

Service charge

£250
P.A

Ground rent



For more information or to arrange a viewing contact
Ian Darley, Zenko Properties



Zenko City Living, 2 Wharf Street,
Leeds, LS2 7EQ



0113 247 0777



ian@zenkoproperties.co.uk



www.zenkoproperties.co.uk



ZENKO
CITY LIVING