

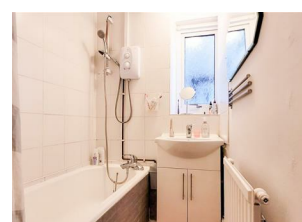
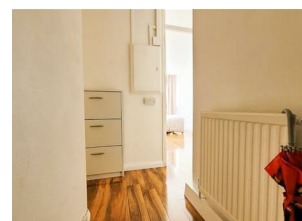
GROUND FLOOR
APPROX. 62.6 SQ. METRES (673.5 SQ. FEET)



TOTAL AREA: APPROX. 62.6 SQ. METRES (673.5 SQ. FEET)

For illustrative purposes only
Plan produced using PlanUp.

Energy Efficiency Rating		
	Current	Potential
Very energy efficient - lower running costs		
(92 plus) A		
(81-91) B		
(69-80) C		
(55-68) D		
(39-54) E		
(21-38) F		
(1-20) G		
Not energy efficient - higher running costs		
England & Wales	EU Directive 2002/91/EC	



WILMOUNT STREET
LONDON SE18 6RJ

Guide price £210,000





****Chain Free****

Introducing a fantastic investment opportunity for cash buyers only

A spacious 2-bedroom flat available for sale, this property offers convenient access to various amenities and the flat itself boasts a generous size, providing ample space for comfortable living. With two well-proportioned bedrooms, this property is perfect for small families, couples, or individuals looking for extra space. The 4th-floor location offers residents a peaceful and elevated living experience, away from the noise of the street.

The surrounding area is highly sought after, known for its vibrant atmosphere and excellent connectivity. Close proximity to central Woolwich ensures easy access to a wide range of shops, restaurants, cafes, and entertainment options, making everyday life a breeze. Additionally, the nearby Elizabeth line station allows for effortless commuting to various destinations, enhancing both convenience and flexibility.

Overall, this 2-bedroom flat presents an excellent opportunity to secure a comfortable and well-located residence in Woolwich. Its ideal size, convenient location make it very appealing.

2 BEDROOMS • 1 RECEPTION ROOMS • 1 BATHROOMS

WILMOUNT STREET

LONDON SE18 6RJ

- CASH BUYERS ONLY
- 2 BEDROOM FLAT
- 4TH FLOOR
- GREAT LOCATION FOR ELIZABETH LINE
- BALCONY WITH GREEN VIEWS
- CLOSE TO EVERYDAY ESSENTIALS
- COUNCIL TAX BAND A
- EPC C
- GREAT INVESTMENT OPPORTUNITY
- CHAIN FREE

