



**Glastonbury Crescent | Walsall | WS3 2RP**  
**Offers Over £170,000**





# Summary

**\*\*TWO BEDROOM END OF TERRACE HOME\*\*FRONT AND REAR GARDEN\*\*KITCHEN DINER\*\*TWO DOUBLE BEDROOMS\*\*LOFT STORAGE SPACE\*\*POPULAR LOCATION\*\*CLOSE TO ALL LOCAL AMENITIES\*\*PERFECT FIRST TIME BUY OR INVESTMENT\*\*VIEWING ESSENTIAL\*\***

Welcome to this charming terraced house located on Glastonbury Crescent in Walsall, a highly sought-after area perfect for first-time buyers and investors alike. This delightful property boasts a well-designed layout, beginning with a concrete print driveway that leads to a welcoming entrance hall. Upon entering, you will find a spacious lounge that provides a comfortable space for relaxation and entertaining. The generous kitchen diner is ideal for family meals and gatherings, offering ample room for dining and cooking. On the first floor, the property features two double bedrooms, providing plenty of space for rest and personalisation. The family bathroom is conveniently located to serve both bedrooms. Notably, the master bedroom includes a staircase leading to a loft room, which can be utilised as an additional bedroom, office, or playroom, adding versatility to the living space. To the rear of the property, you will discover a private and enclosed mature garden, perfect for enjoying the outdoors, gardening, or simply unwinding in a tranquil setting. This property presents an excellent opportunity to own a lovely home in a desirable location, combining comfort and convenience. Do not miss the chance to make this house your own.

# Key Features

- TWO BEDROOM END OF TERRACE HOME
- HIGHLY SOUGHT AFTER LOCATION
- TWO DOUBLE BEDROOMS
- FITTED BATHROOM
- FRONT AND REAR GARDEN
- KITCHEN DINER
- MATURE REAR GARDEN
- FITTED KITCHEN
- VIEWING ESSENTIAL
- CALL WEBBS TO SECURE YOUR VIEWING TODAY ON 01922 663399!!

# Rooms and Dimensions

## Entrance Hall

**Lounge**  
13'8" x 17'7" (4.17m x 5.36m)

**Kitchen Diner**  
16'0" x 9'6" (4.88m x 2.90m)

## First Floor Landing

**Bedroom One**  
12'5" x 10'5" (3.81m x 3.20m)

**Bedroom Two**  
12'11" x 8'11" (3.94m x 2.72m)

## Family Bathroom

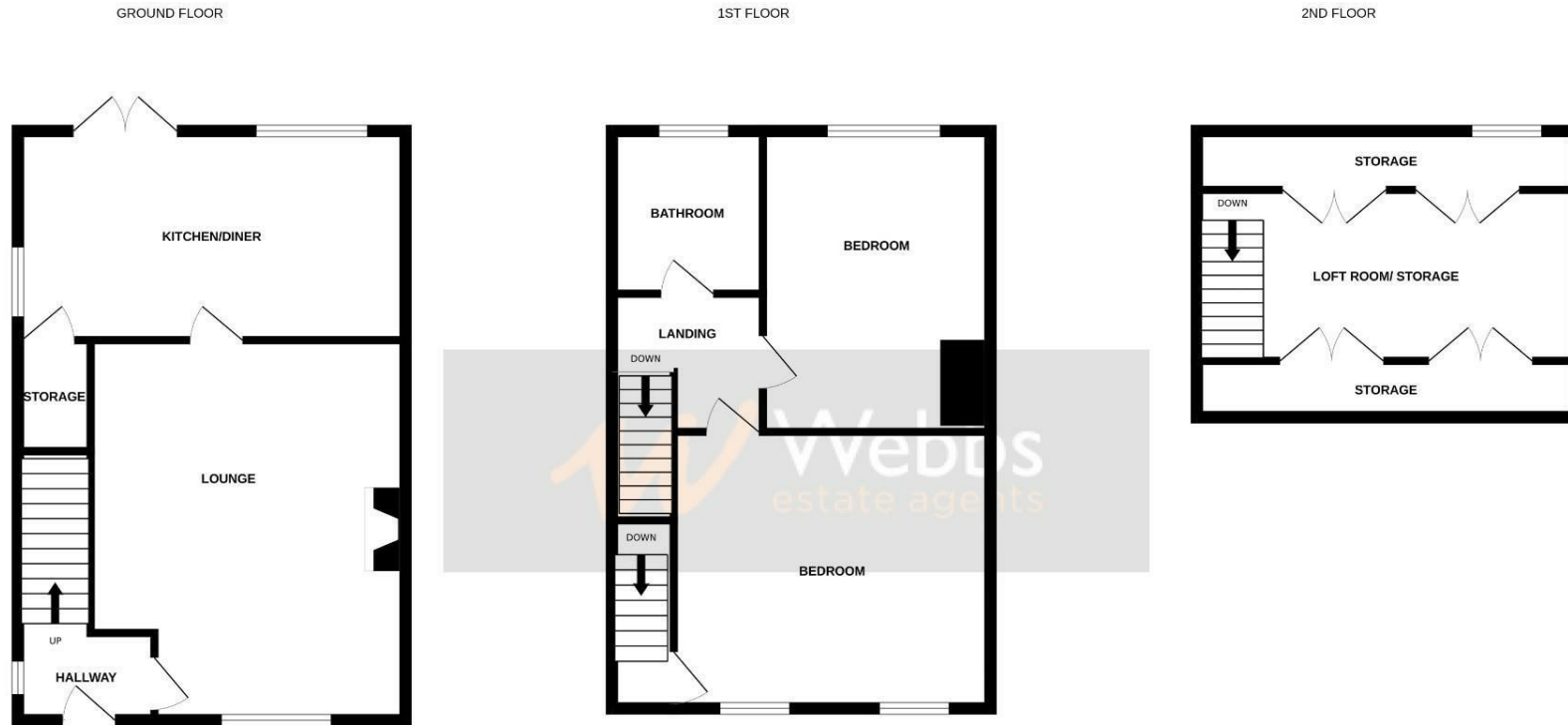
## Loft Space

## Identification Checks B



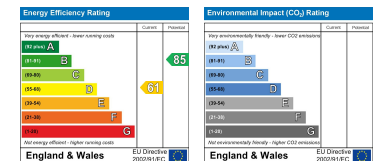






Whilst every attempt has been made to ensure the accuracy of the floorplan contained here, measurements of doors, windows, rooms and any other items are approximate and no responsibility is taken for any error, omission or mis-statement. This plan is for illustrative purposes only and should be used as such by any prospective purchaser. The services, systems and appliances shown have not been tested and no guarantee as to their operability or efficiency can be given.  
Made with Metropix ©2025

Webbs Estate Agents - endeavour to maintain accurate depictions of properties in Virtual Tours, Floor Plans and descriptions, however, these are intended only as a guide and purchasers must satisfy themselves by personal inspection.



212 High Street, Bloxwich, Walsall, WS3 3LA

Tel: 01922 663399 | Email: [bloxwich@webbestateagents.co.uk](mailto:bloxwich@webbestateagents.co.uk) | [www.webbestateagents.co.uk](http://www.webbestateagents.co.uk)

