



Braintree Avenue, Ilford, IG4 5PY

Guide Price £675,000



# Braintree Avenue

Ilford, IG4 5PY

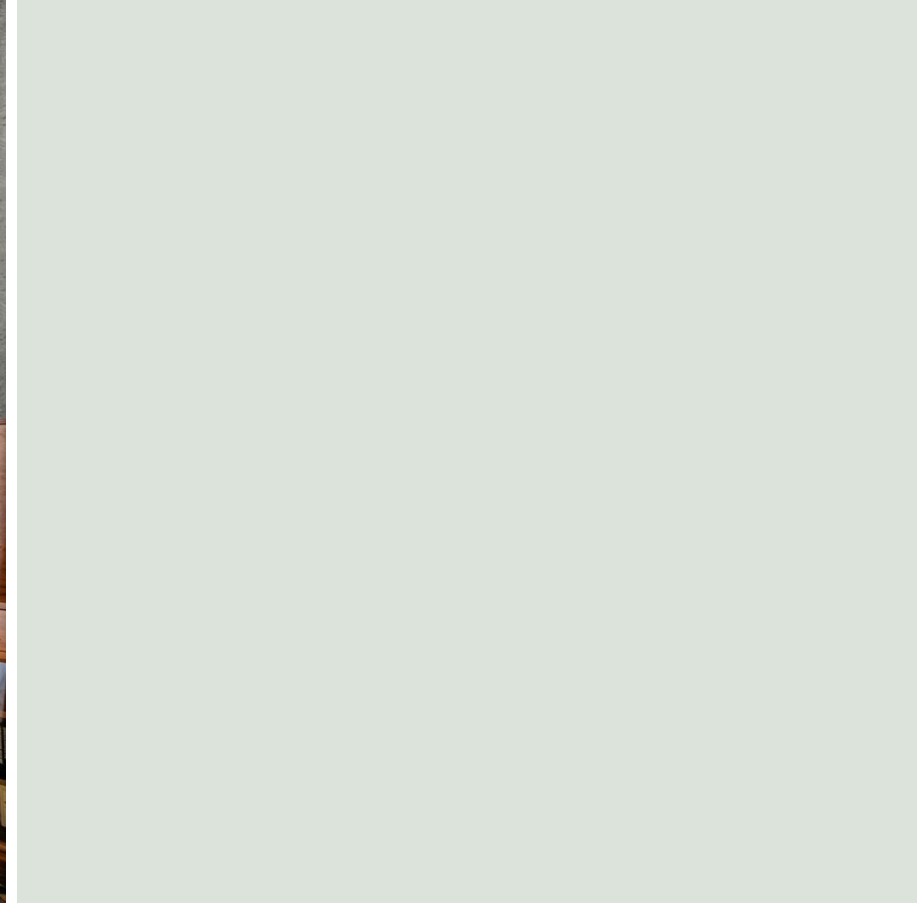
- Three Bedroom
- In need of modernisation
- Great Location
- Side Access
- Potential to extend (Subject to Planning Consent)

This three bedroom house presents a well proportioned layout, with a spacious living area.

For those looking to expand their living space, this house offers significant potential for extension (subject to planning consent)

The location is particularly appealing, with local schools within walking distance, making it an ideal choice for families. Furthermore, Redbridge Station and Gants Hill Station (Central Line) is also conveniently close, providing excellent transport links for commuting or exploring the wider area.





Directions

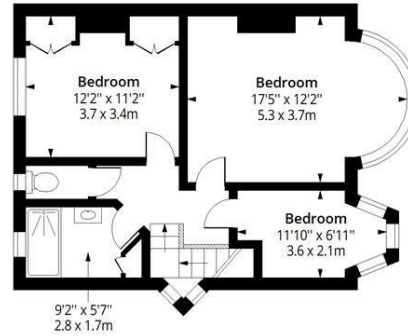
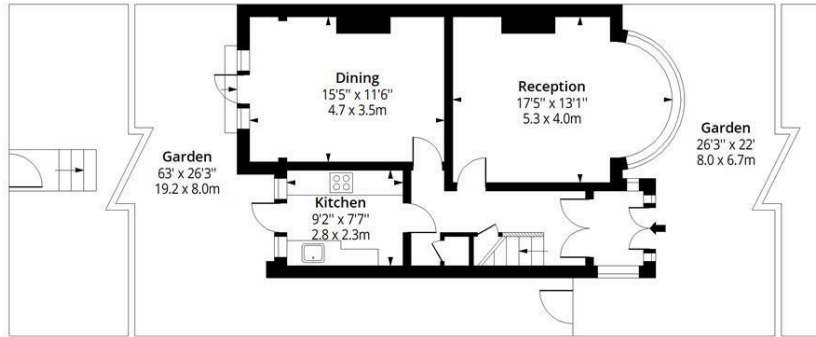




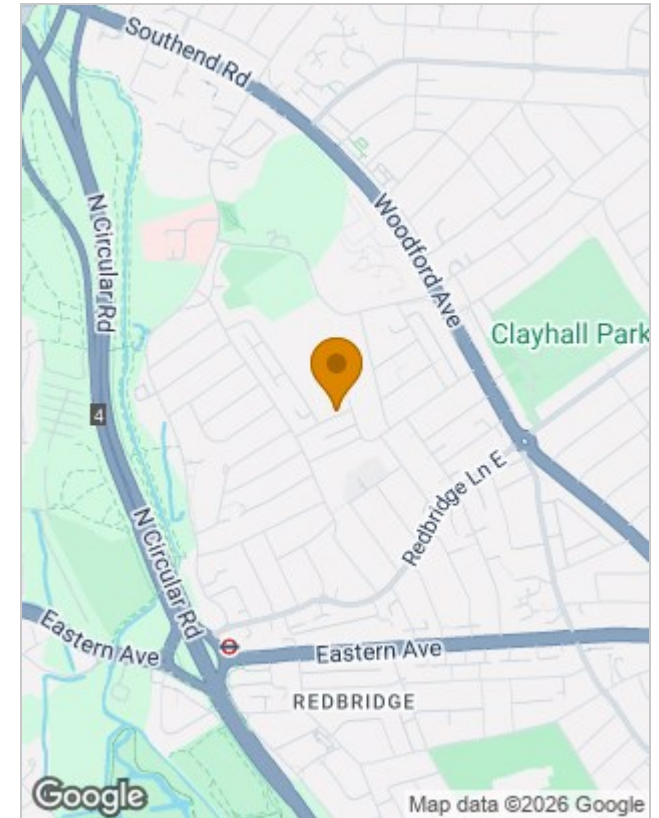
## Floor Plans

### Braintree Avenue IG4

Approx. Gross Internal Area 1154 Sq Ft - 107.21 Sq M



## Location Map



## Energy Performance Graph

Energy Efficiency Rating		Current	Potential
Very energy efficient - lower running costs			
(92 plus) <b>A</b>			
(81-91) <b>B</b>			
(69-80) <b>C</b>			
(55-68) <b>D</b>			
(39-54) <b>E</b>			
(21-38) <b>F</b>			
(1-20) <b>G</b>		<b>5</b>	<b>78</b>
Not energy efficient - higher running costs			
<b>England &amp; Wales</b>		EU Directive 2002/91/EC	



Measured according to RICS IPMS2. Floor plan is for illustrative purposes only and is not to scale. Every attempt has been made to ensure the accuracy of the floor plan shown, however all measurements, fixtures, fittings and data shown are an approximate interpretation for illustrative purposes only. 1 sq m = 10.76 sq feet.

ipaplus.com

Date: 1/7/2026

## Viewing

Please contact our Redbridge Sales Office on 020 8551 0211 if you wish to arrange a viewing appointment for this property or require further information.

The particulars are set out as a general outline only for the guidance of intended purchasers or lessees, and do not constitute, any part of a contract. Nothing in these particulars shall be deemed to be a statement that the property is in good structural condition or otherwise nor that any of the services, appliances, equipment or facilities are in good working order. Purchasers should satisfy themselves of this prior to purchasing.