

MUNDAY'S

Mary Datchelor House, Camberwell  
Grove, Camberwell

£599,950



Top class two double bedroom apartment of 824 square feet, with both bath and shower rooms (the latter is an en suite), generous and well-maintained communal gardens/private grounds, onsite concierge, and (underground!) secure allocated parking.

Find your new handsome home on the second floor of The Mary Datchelor School development (architects Rolfe Judd for St. George, 2010). Enjoy a pleasingly-leafy location, within Camberwell Grove Conservation Area, moments from central Camberwell. Walk just eight minutes to Denmark Hill Station.

The two Victorian former school buildings here have been sensitively restored and converted to an incredibly high standard. You will enjoy high-end fixtures and fittings and impressive attention to detail throughout (including underfloor heating).

*Munday's Estate Agents Ltd.*  
2 Mary Boast Walk  
London SE5 8SP  
020 3318 8900

[www.mundays.com](http://www.mundays.com)

MUNDAY'S

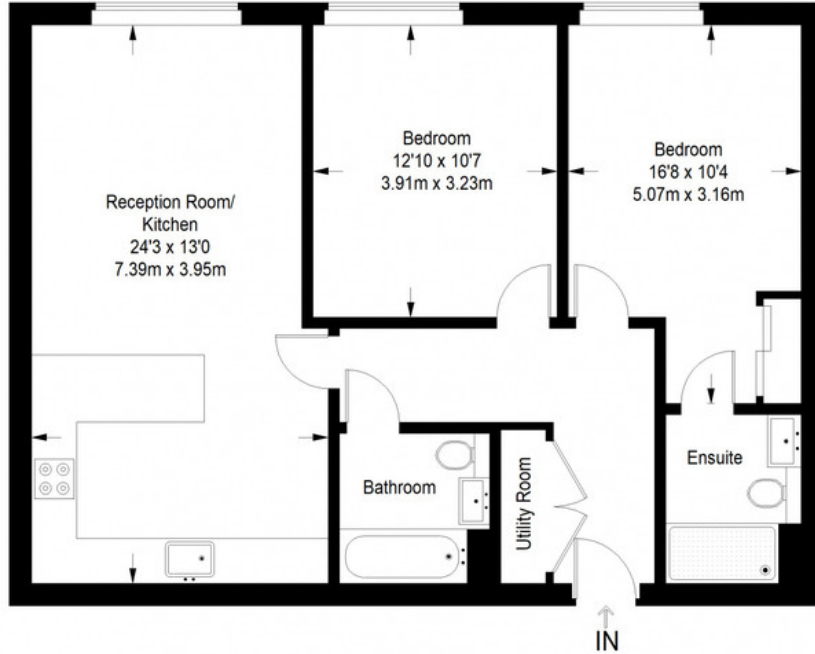


*Munday's Estate Agents Ltd.*  
2 Mary Boast Walk  
London SE5 8SP  
020 3318 8900

[www.mundays.com](http://www.mundays.com)

MUNDAY'S

## Mary Datchelor House



**Second Floor = 824 sq ft**

Approximate Gross Internal Area  
SECOND FLOOR = 824 sq ft / 76.55 sq m  
Total = 824 sq ft / 76.55 sq m



This plan is for layout guidance only. Not drawn to scale unless stated. Windows and door openings are approximate. Whilst every care is taken in the preparation of this plan, please check all dimensions, shapes and compass bearings before making any decisions reliant upon them. (ID357409)

*Munday's Estate Agents Ltd.*  
2 Mary Boast Walk  
London SE5 8SP  
020 3318 8900

[www.mundays.com](http://www.mundays.com)