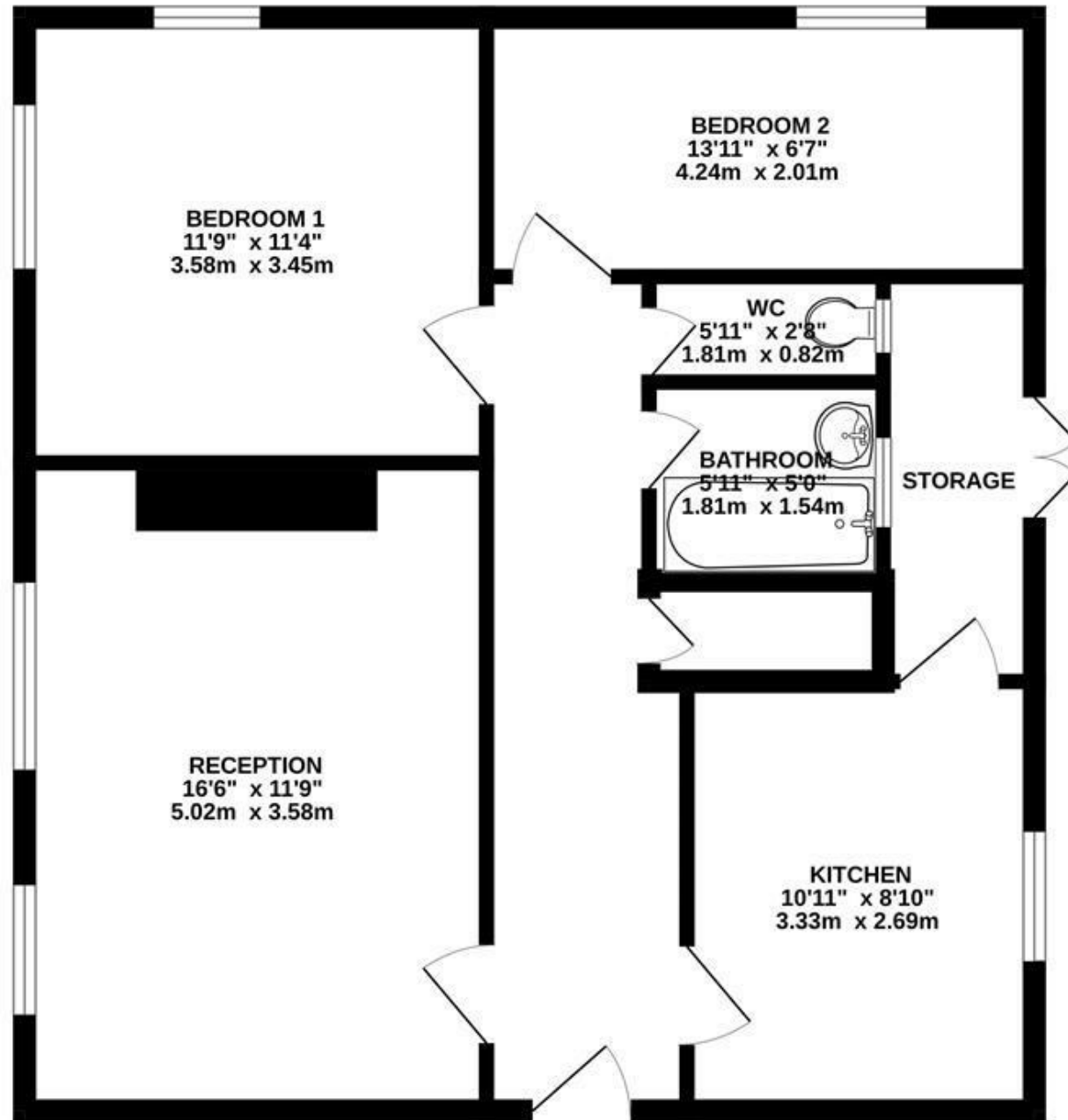


GROUND FLOOR  
688 sq.ft. (63.9 sq.m.) approx.

**GRAVITY**  
estates

Gravity Estates  
18 Golders Green Road, NW11 8LL  
02083570810  
admin@gravity-estates.com  
www.gravity-estates.com



**Corbett Grove, London, N22 8DQ**

Offers are invited on this 2 bedroom apartment situated on the ground floor of this purpose built block and within walking distance of Bounds Green Tube Station (Piccadilly Line) and less than a mile to Alexandra Park and Palace, with local amenities also within close proximity.

The apartment comprises a spacious lounge, separate fitted kitchen with large walk in storage room as well as further storage cupboards in the hallway, bathroom with separate w/c and 2 double bedrooms. The current tenants in situ are paying £1450pcm making this an ideal buy-to-let investment.

Leasehold

**£335,000**

CORBETT GROVE N22 8DQ  
TOTAL FLOOR AREA: 688 sq.ft. (63.9 sq.m.) approx.  
Whilst every attempt has been made to ensure the accuracy of the floorplan contained here, measurements of doors, windows, rooms and any other items are approximate and no responsibility is taken for any error, omission or mis-statement. This plan is for illustrative purposes only and should be used as such by any prospective purchaser. The services, systems and appliances shown have not been tested and no guarantee as to their operability or efficiency can be given.  
Made with Metropix ©2023



Gravity Estates  
18 Golders Green Road, London, NW11 8LL  
02083570810 admin@gravity-estates.com

