



Arundel Square, N7

£588 Per week

A two bedroom flat set within a church conversion. It benefits from a open plan kitchen, two double bedrooms and church features throughout including beams and exposed brickwork

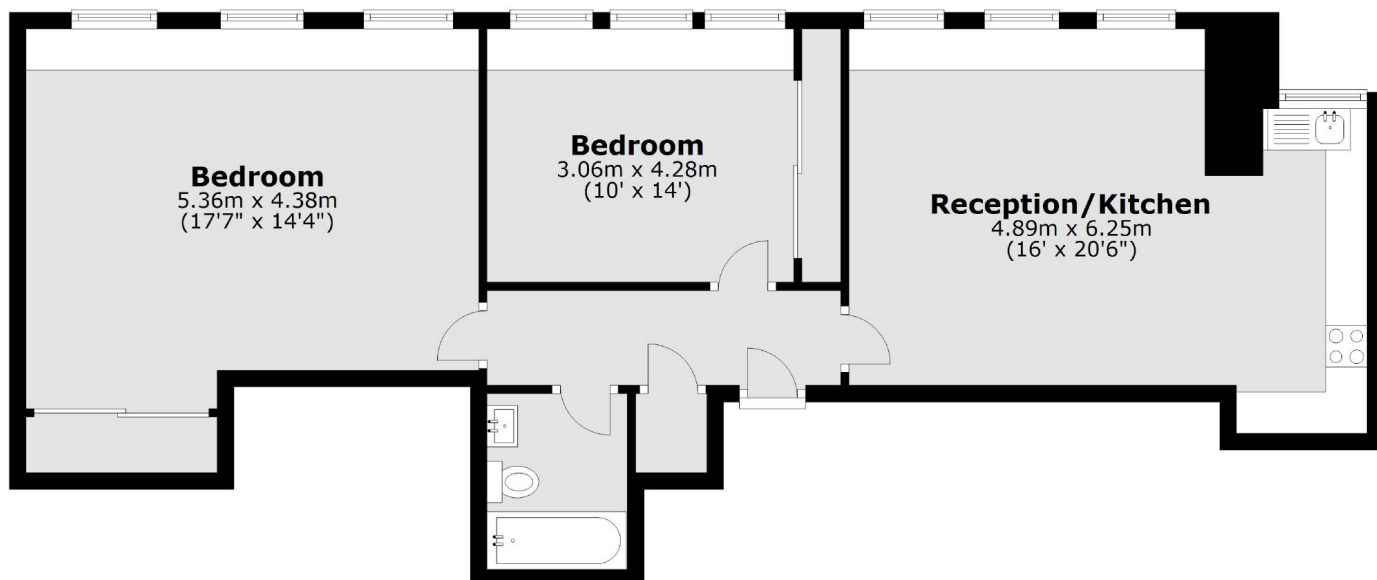
This apartment is located on the picturesque Arundel square and is half a mile from Highbury and Islington Station (Victoria line and Overground). The many shops, amenities and eateries of Upper Street are also half a mile walk.

Features

- Two Double Bedrooms
- Open Plan Kitchen/Living Area
- Furnished
- Church Conversion
- Exposed Beams
- Amazing Location

Arundel Square, London, N7

Third Floor



Total area: approx. 76.0 sq. metres (818.4 sq. feet)