



## Key Features

- ◆ Three/Four bedroom, top floor apartment
- ◆ Sought-after Lower Meads location
- ◆ Close to seafront and Eastbourne College
- ◆ Walking distance from town centre and train station
- ◆ Neutral Decor
- ◆ EPC rating D

3  2  1 

Silverdale Road, Lower Meads, Eastbourne

£1,250 PCM



Northwood are delighted to welcome to market this fantastic three/four-bedroom, second-floor apartment in the sought-after Lower Meads area of Eastbourne.

Accommodation comprises: large living room, fitted kitchen, three/four bedrooms, bathroom and separate WC.

Further benefits include free on street parking, gas central heating and built-in wardrobes.

Kitchen appliances are available, but will not be maintained by the landlord.







Located in the sought-after Lower Meadows area of Eastbourne, just off the Western Lawns, a short walk from Eastbourne College and the theatre district and within walking distance of the town centre and train station, this fantastic apartment occupies the whole top floor of a Victorian villa and is perfect for making the most of life on the Sunshine Coast.

Please view our immersive virtual tour to fully appreciate this fantastic property:

<https://tour.giraffe360.com/e9ae42c22dc440ed99f7abd45c1a680a>

Mobile Phone Coverage and Broadband speeds can be checked on the Ofcom website:

<https://checker.ofcom.org.uk/>

Council Tax Band C: £2251

Holding Deposit: £285.00 (equivalent to one week's rent)

Full Deposit: £1440.00 (holding deposit + equivalent of four weeks' rent)

1st month's rent + Full Deposit: £2690.00

Minimum Tenancy: 6 months

Total household income must exceed £37,500.00 to be considered for this property.

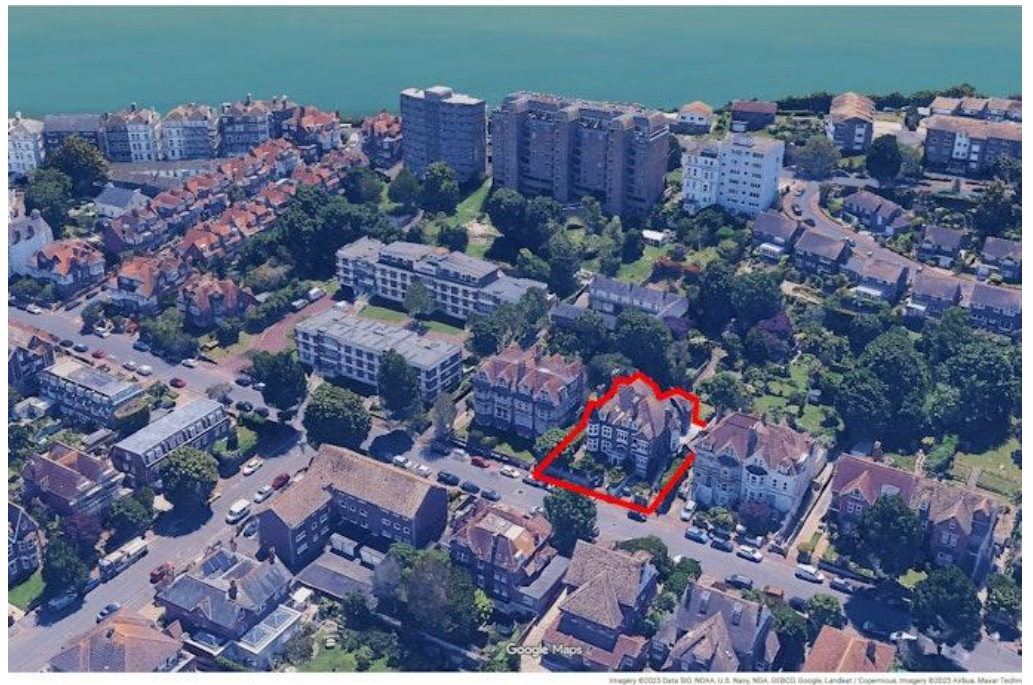
This property is managed by Northwood, should a maintenance issue arise, it can be reported 24 hours a day via our website.



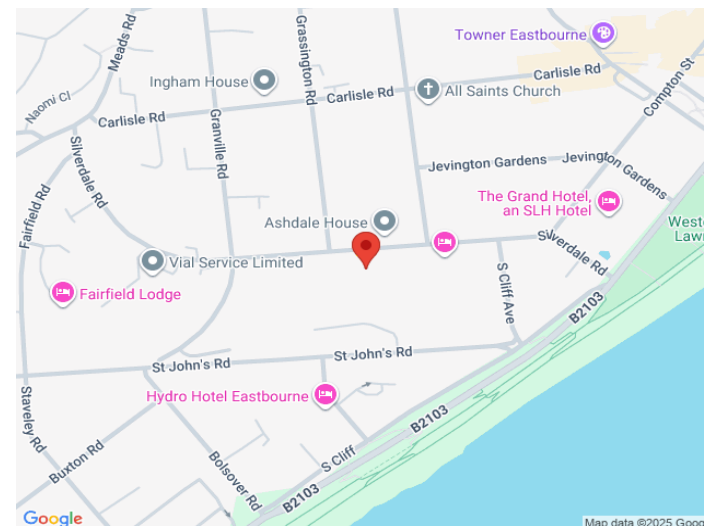








Imagery ©2022 Data SCS, NOAA, U.S. Navy, NGA, USGS, Google, LandSat / DigitalGlobe, GeoEye, AeroGRID, IGN, Sway, CNES, Airbus, Maxar, etc.



## Northwood

81-83 South Street

Eastbourne

BN21 4LR

01323 744544

eastbourne@northwooduk.com