



6 Cantley Avenue, Gedling - NG4 3PD

Guide Price £300,000 - £325,000



6 Cantley Avenue

Gedling, Nottingham

GUIDE PRICE £300,000 - £325,000 CHAIN- FREE
Beautifully presented semi-detached home featuring lounge, stunning open-plan kitchen/living, three beds alongside generous parking & southerly rear garden.

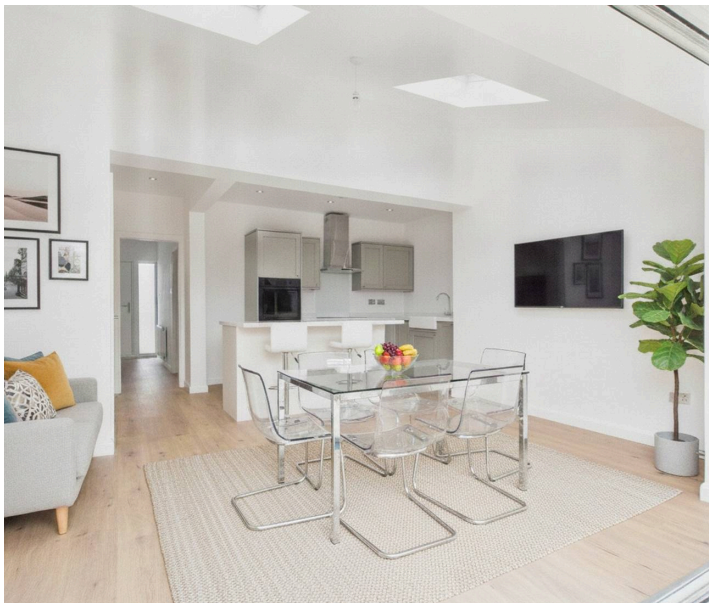
Council Tax band: B

Tenure: Freehold

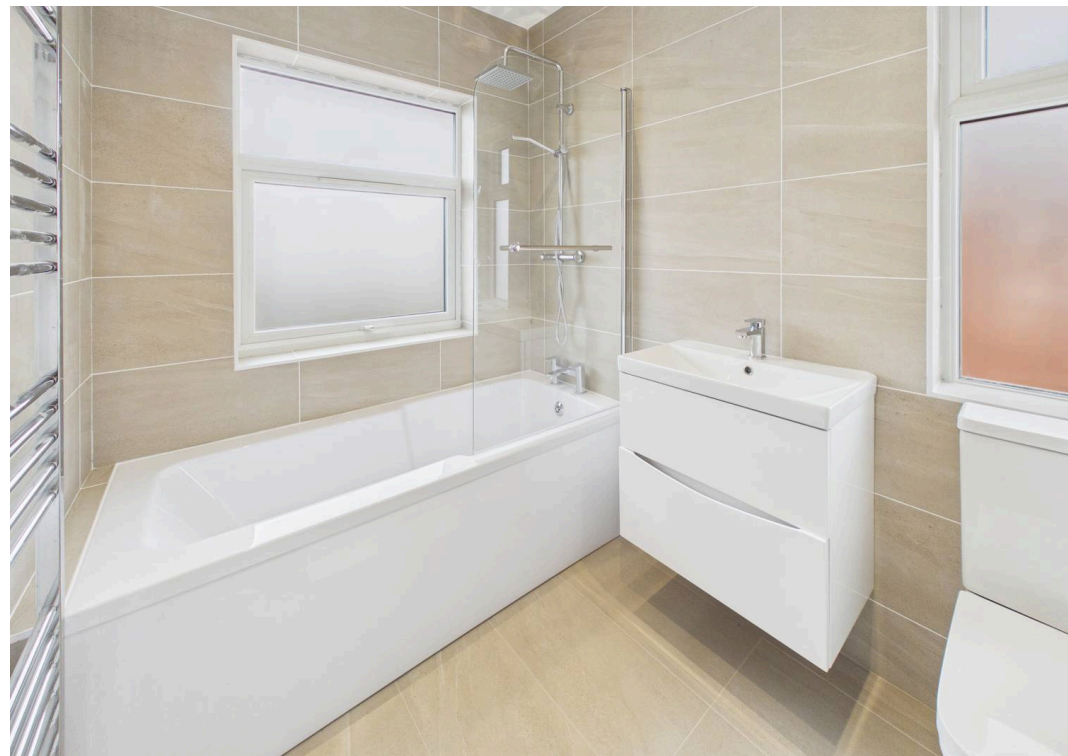
EPC Energy Efficiency Rating: D

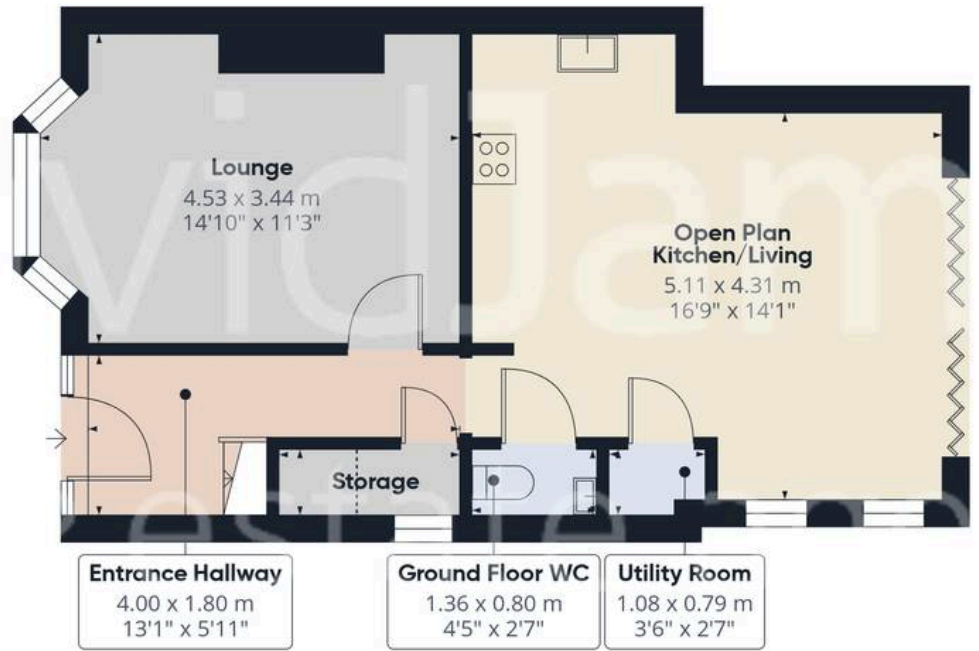
EPC Environmental Impact Rating: E

- Recently renovated three-bedroom semi-detached home
- Offered to the market with no onward chain
- Conveniently positioned near shops, amenities and bus links
- Beautifully presented ideal for first-time buyers and growing families
- Delightful front lounge enhanced by a large bay window
- Stunning open-plan kitchen/living with central island and bi-fold doors
- Well-proportioned three-bedroom first-floor layout
- Contemporary three-piece bathroom suite with rainfall shower over bath
- Generous southerly-facing rear garden with paved patio and lawn
- Large driveway providing off-street parking for multiple vehicles

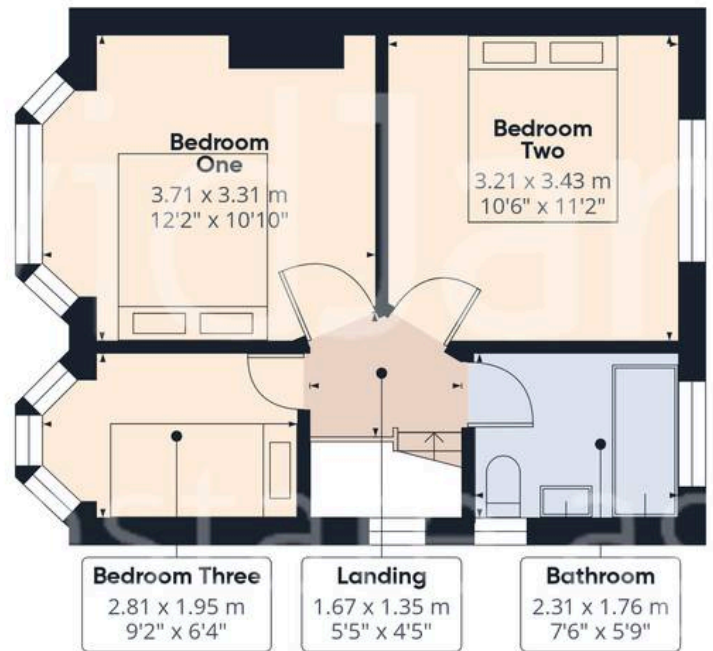








Floor 0



Floor 1



Approximate total area⁽¹⁾

80 m²
860 ft²

Reduced headroom

0.6 m²
6 ft²

(1) Excluding balconies and terraces

Reduced headroom

..... Below 1.5 m/5 ft

Calculations reference the RICS IPMS 3C standard. Measurements are approximate and not to scale. This floor plan is intended for illustration only.

GIRAFFE360



David James Estate Agents

David James Estate Agents, 45B Plains Road - NG3 5JU

0115 962 4213 • mapperley@david-james.com • www.david-james.com

These particulars are produced in good faith and are set out as a general guide only. Measurements are approximate and floor plans are for illustrative purposes only. Services have not been tested. We have established professional relationships with third-party suppliers for the provision of services to Clients, details of which can be found on the property listing page on our website.