



J&D ESTATE AGENTS

SALES | LETTINGS | MANAGEMENT



22 Hartleys Village, Liverpool, L9 7AH

Offers invited £95,000

Nestled in the charming Hartleys Village of Liverpool, this two-bedroom house presents an exciting opportunity for both investors and first-time buyers eager to create their dream home. With a generous loft room, the property offers ample potential for expansion and personalisation, allowing you to tailor the space to your unique tastes and needs.

The house features a conservatory, which invites natural light and provides a delightful space to relax or entertain. While the property is in need of renovation, this presents a blank canvas for those with a vision. The layout is functional, and with some thoughtful updates, it can be transformed into a modern and inviting residence.

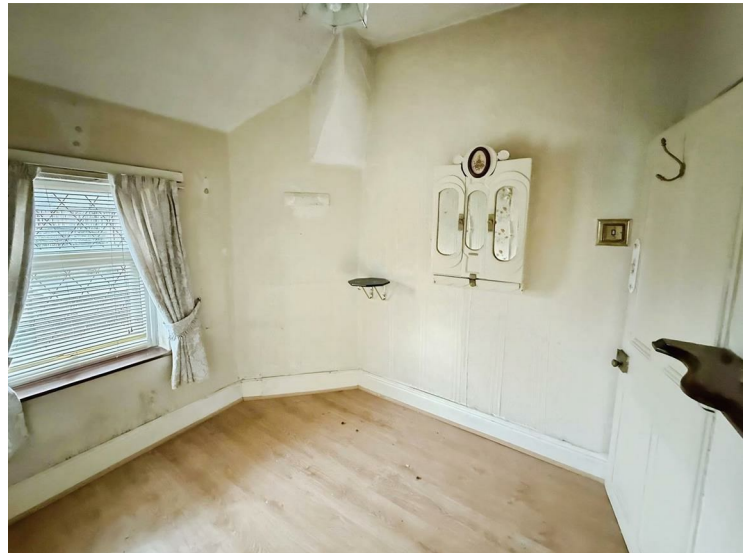
Hartleys Village is a vibrant community, offering a range of local amenities and excellent transport links, making it an ideal location for those who appreciate both convenience and a sense of community. This property is perfect for anyone looking to invest in a home that they can truly make their own.

Whether you are a seasoned investor or a first-time buyer ready to embark on a renovation project, this house in Hartleys Village is a promising opportunity that should not be missed. Embrace the chance to create a space that reflects your style and aspirations in this welcoming Liverpool neighbourhood.

External



Bedroom 2



Bathroom



Living room



Bedroom 1



Kitchen

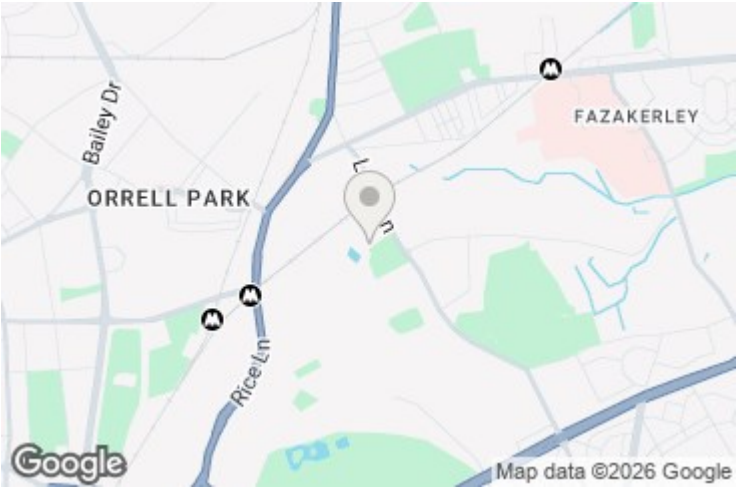


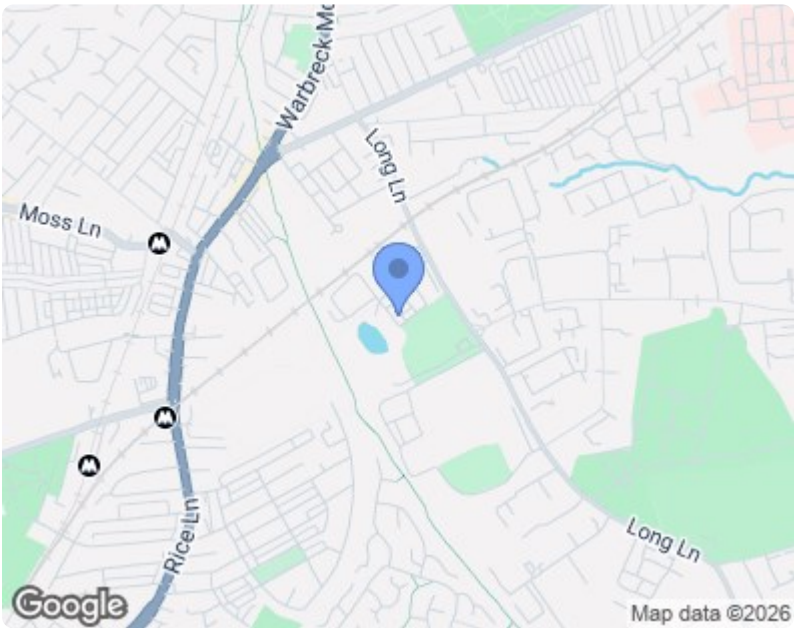
Garden

Conservatory



Loft





Energy Efficiency Rating			
	Current	Potential	
Very energy efficient - lower running costs			
(92 plus) A			
(81-91) B			
(69-80) C			
(55-68) D			
(39-54) E			
(21-38) F			
(1-20) G			
Not energy efficient - higher running costs			
England & Wales	EU Directive 2002/91/EC		

Environmental Impact (CO ₂) Rating			
	Current	Potential	
Very environmentally friendly - lower CO ₂ emissions			
(92 plus) A			
(81-91) B			
(69-80) C			
(55-68) D			
(39-54) E			
(21-38) F			
(1-20) G			
Not environmentally friendly - higher CO ₂ emissions			
England & Wales	EU Directive 2002/91/EC		