



## PURVES ROAD, KENSAL GREEN

LONDON, NW10 5ST

PRICE £1,500,000

An exceptional and extended Victorian style End of Terrace (Corner) house is available for sale in Purves Road. This beautifully presented family home comprises 4 bedrooms (one with en-suite shower/wc), 25ft through lounge with period fireplace/features, 320 sqft kitchen with island leading to rear garden, family bathroom & 2 separate wc's. The property boasts 1685sqft of living space and has been designed to a high standard and extended to the rear/side and also loft converted.

This fine home is ideally situated a short walk from Kensal Green (Lioness & Bakerloo Line) station, Kensal Rise station (Mildmay Line), the popular shops and deli's of College Road, Chamberlayne Road and Harrow Road with its bus routes into the City/West End.

Tenure is Freehold and Council Tax Band is 'D' (London Borough of Brent).

- IMPRESSIVE 1685 sq.ft (157 sq.m) VICTORIAN END OF TERRACE (CORNER) HOUSE ON THREE FLOORS
- 4 BEDROOMS (TWO WITH FITTED WARDROBES & ONE WITH EN-SUITE BATHROOM/WC)
- REAR/SIDE EXTENDED KITCHEN/DINING ROOM WITH UNDERFLOOR HEATING
- WOOD FLOORING & DOUBLE GLAZED WINDOWS WITH SHUTTERS
- SOUTH FACING REAR GARDEN
- SITUATED CLOSE TO KENSAL GREEN STATION

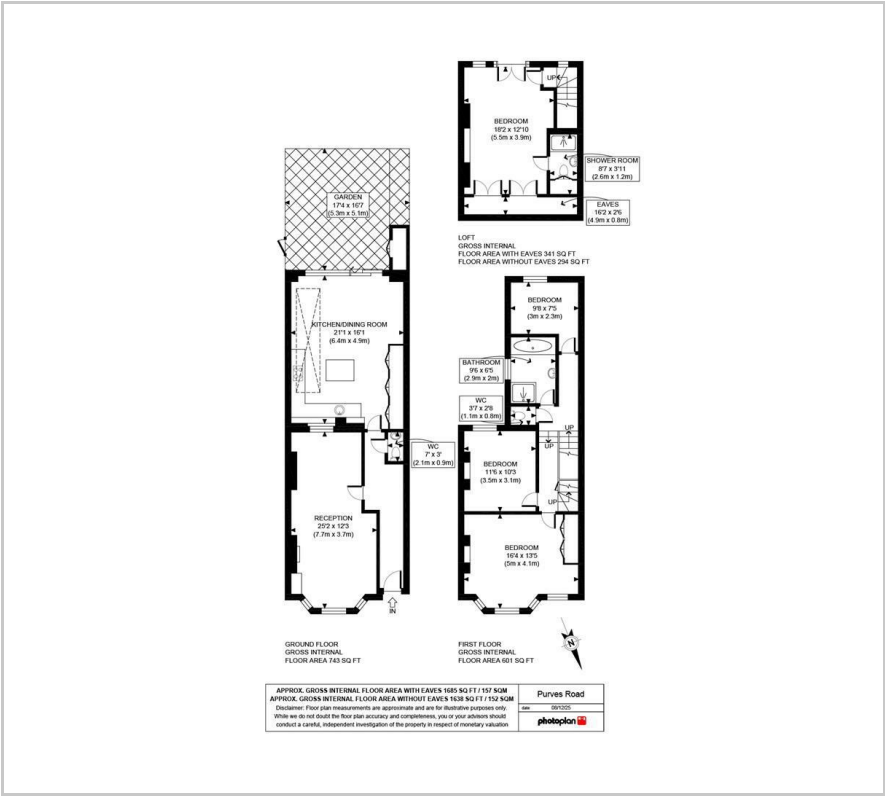
### VIEWING

Please contact our Wenlock & Taylor Office on 020 8969 0122 if you wish to arrange a viewing appointment for this property or require further information

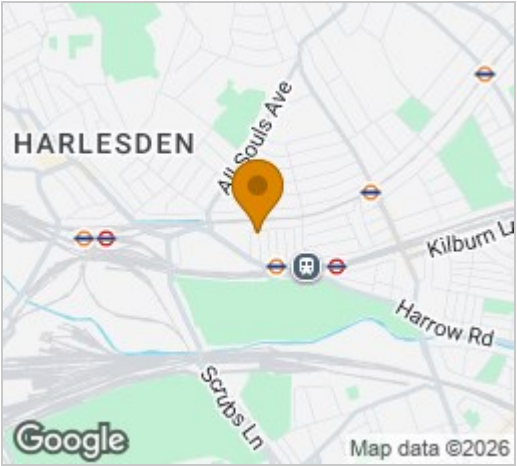




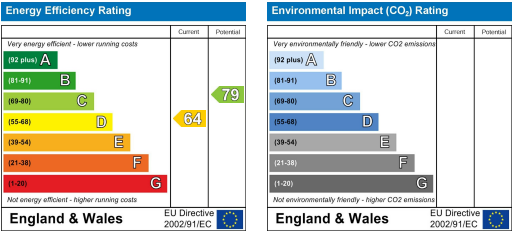
FLOOR PLAN



AREA MAP



ENERGY EFFICIENCY GRAPH



These particulars, whilst believed to be accurate are set out as a general outline only for guidance and do not constitute any part of an offer or contract. Intending purchasers should not rely on them as statements of representation of fact, but must satisfy themselves by inspection or otherwise as to their accuracy. No person in this firms employment has the authority to make or give any representation or warranty in respect of the property.