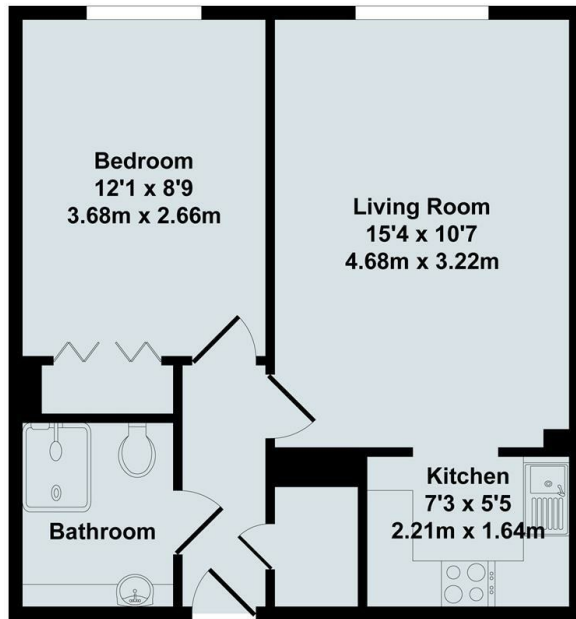




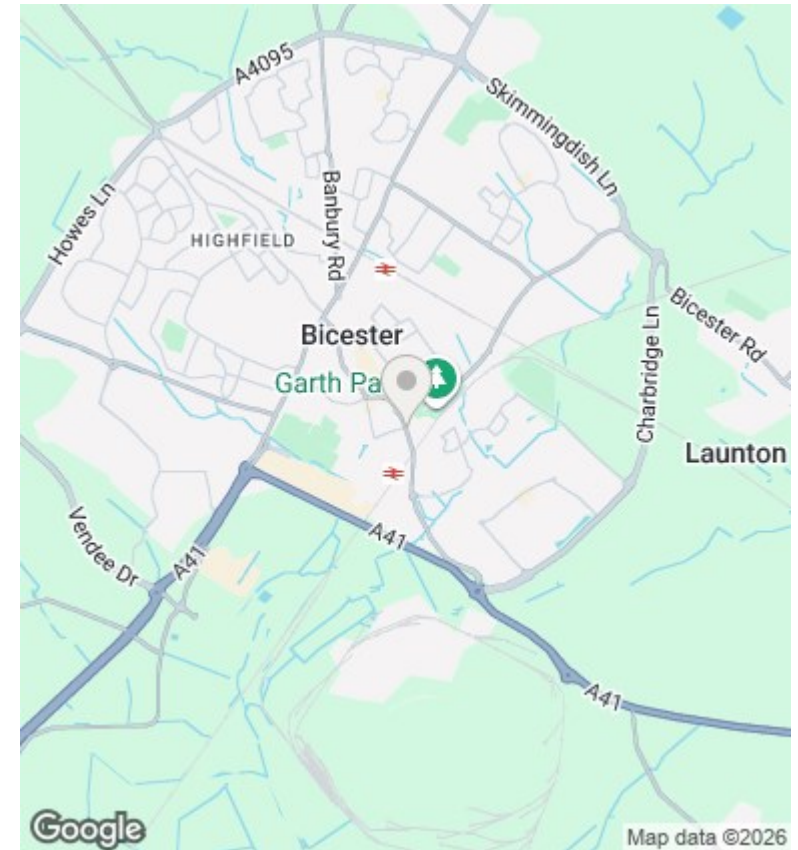
Flat 24, Hometree House London Road, Bicester, OX26 6BP

£900 - 25th April 2026.

- One bedroom retirement flat for the over 60s only
- Kitchen and shower room
- Mains electricity and water
- Council Tax Band A
- Unfurnished
- Electric heating
- Use of car park on first come first served basis
- Lift
- Communal laundry room
- EPC rating C



Total Approx. Floor Area 413 Sq.Ft. (38.40 Sq.M.)
 All items illustrated on this plan are included in the "Total Approx Floor Area"



Directions

Viewings

Viewings by arrangement only. Call 01865 515900 to make an appointment.

Council Tax Band

A

EPC Rating:

C

| Energy Efficiency Rating | | Current | Potential |
|--|--|-------------------------|-----------|
| <i>Very energy efficient - lower running costs</i> | | | |
| (92 plus) A | | | |
| (81-91) B | | | |
| (69-80) C | | 80 | 81 |
| (55-68) D | | | |
| (39-54) E | | | |
| (21-38) F | | | |
| (1-20) G | | | |
| <i>Not energy efficient - higher running costs</i> | | | |
| England & Wales | | EU Directive 2002/91/EC | |