



Widmore Drive, Hemel Hempstead, HP2 5JJ
£2,000 PCM

Clements Estate Agents are pleased to market this, recently refurbished, THREE bedroom house, situated in this popular HP2 location. Comprising of modern kitchen, fitted with white goods, large living room and three good size bedrooms. Other benefits include driveway parking, large storage area and a good size garden. Located close to shops and other amenities, call us now to arrange your viewing. Available soon!

External

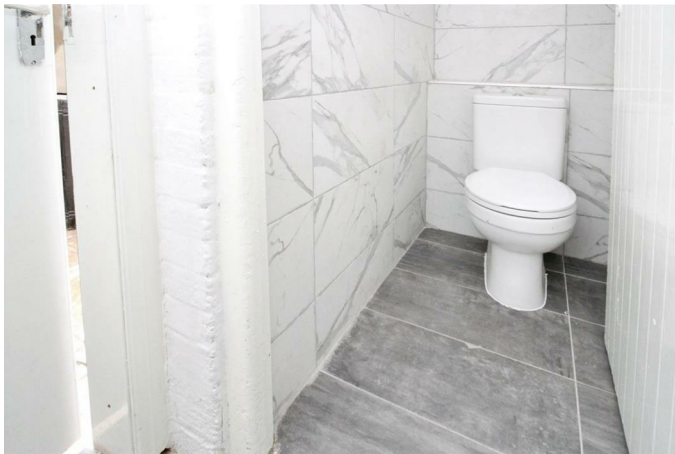
Kitchen 11'5" x 9'3" (3.48m x 2.82m)



Bedroom 3 9'4" x 7'5" (2.84m x 2.26m)



WC



Bedroom 2 10'11" x 9'4" (3.34 x 2.85)



Living Room 19'0" x 14'10" (5.79m x 4.52m)



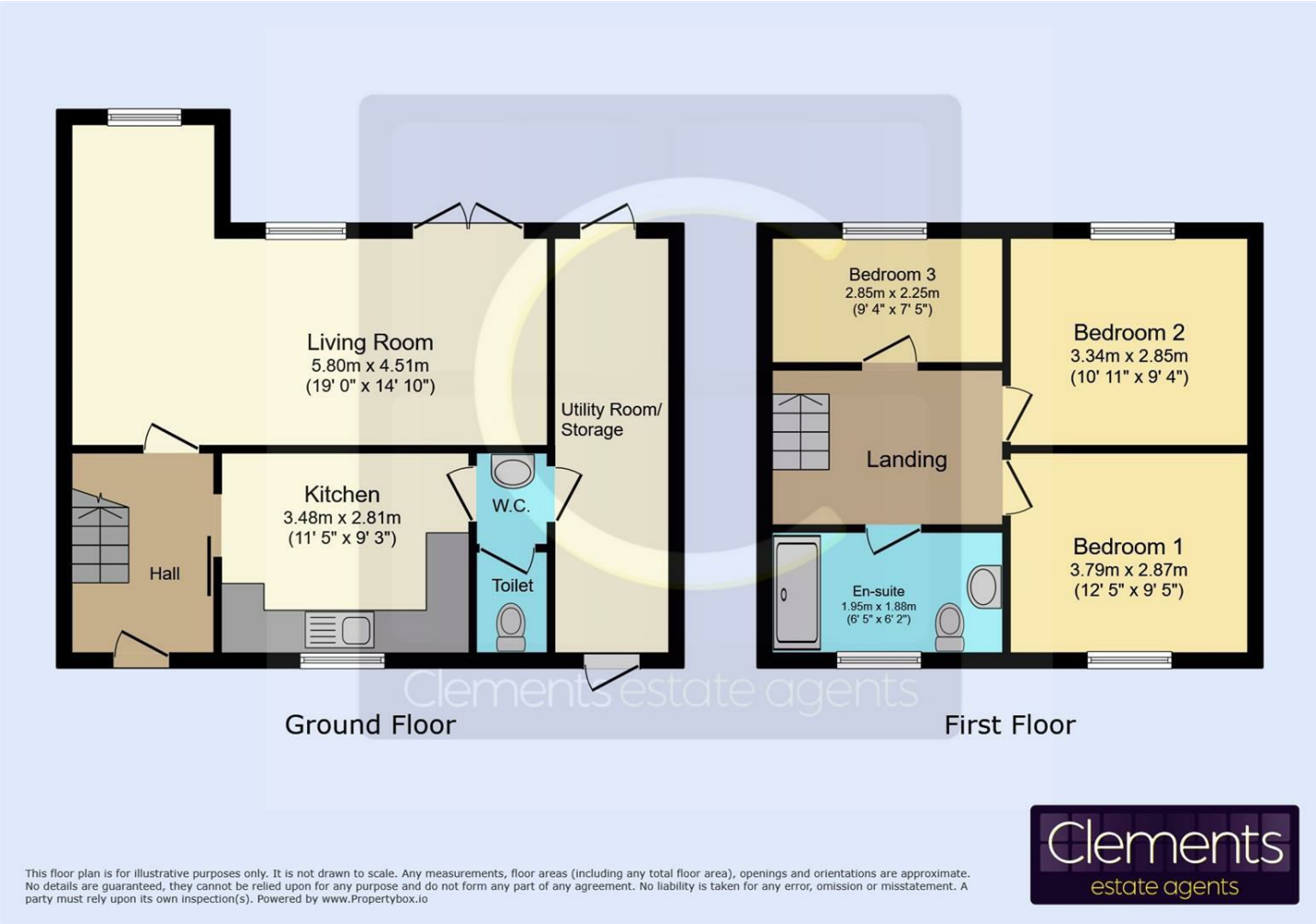
Bedroom 1 12'5" x 9'5" (3.78m x 2.87m)



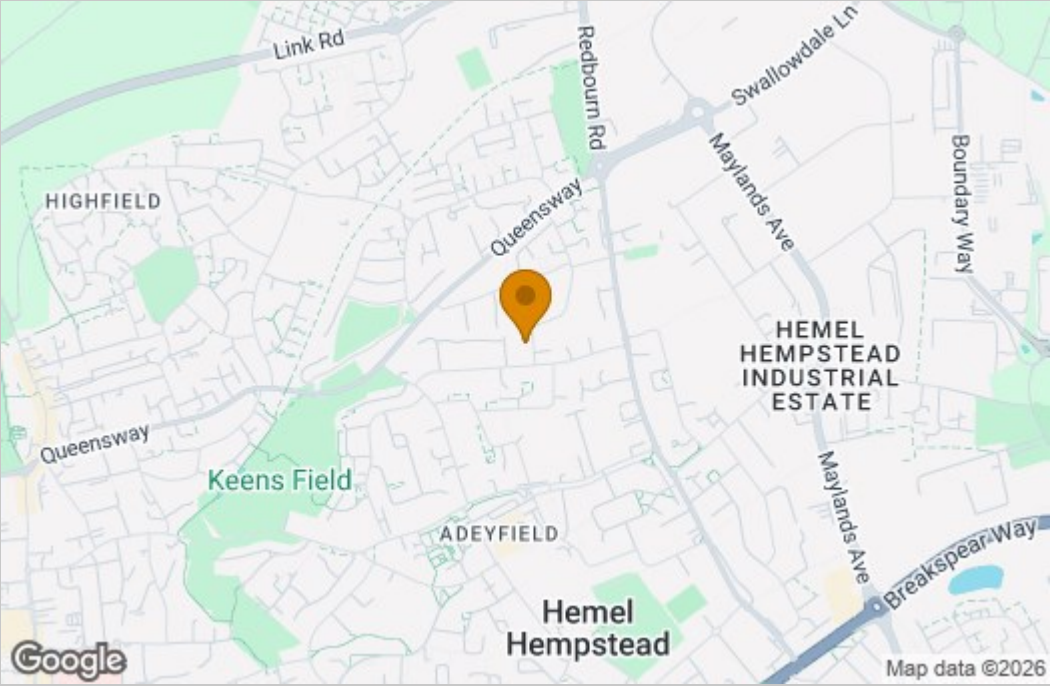
Garden



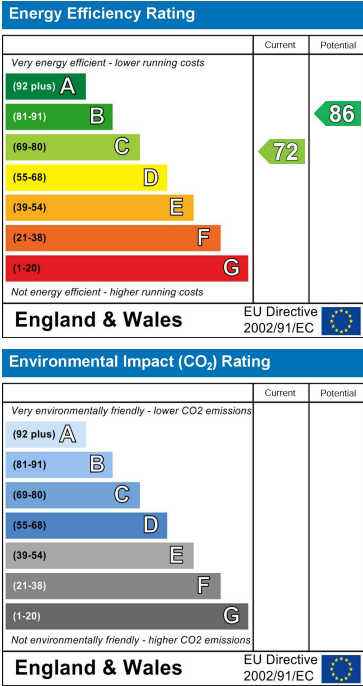
Floor Plan



Area Map



Energy Efficiency Graph



These particulars, whilst believed to be accurate are set out as a general outline only for guidance and do not constitute any part of an offer or contract. Intending purchasers should not rely on them as statements of representation of fact, but must satisfy themselves by inspection or otherwise as to their accuracy. No person in this firm's employment has the authority to make or give any representation or warranty in respect of the property.