



## 153 TOWER BRIDGE ROAD, SE1

£3,500 pcm

Two Bedroom apartment, located in Newham's Yard; just off Bermondsey Street. This new-build development has a concierge and residents benefit from a stunning view of the London Skyline from the roof terrace.

- Available Now
- Two-Bedroom / Two-Bathroom
- Fully Furnished
- Daytime Concierge
- Close to London Bridge Station
- EPC: B

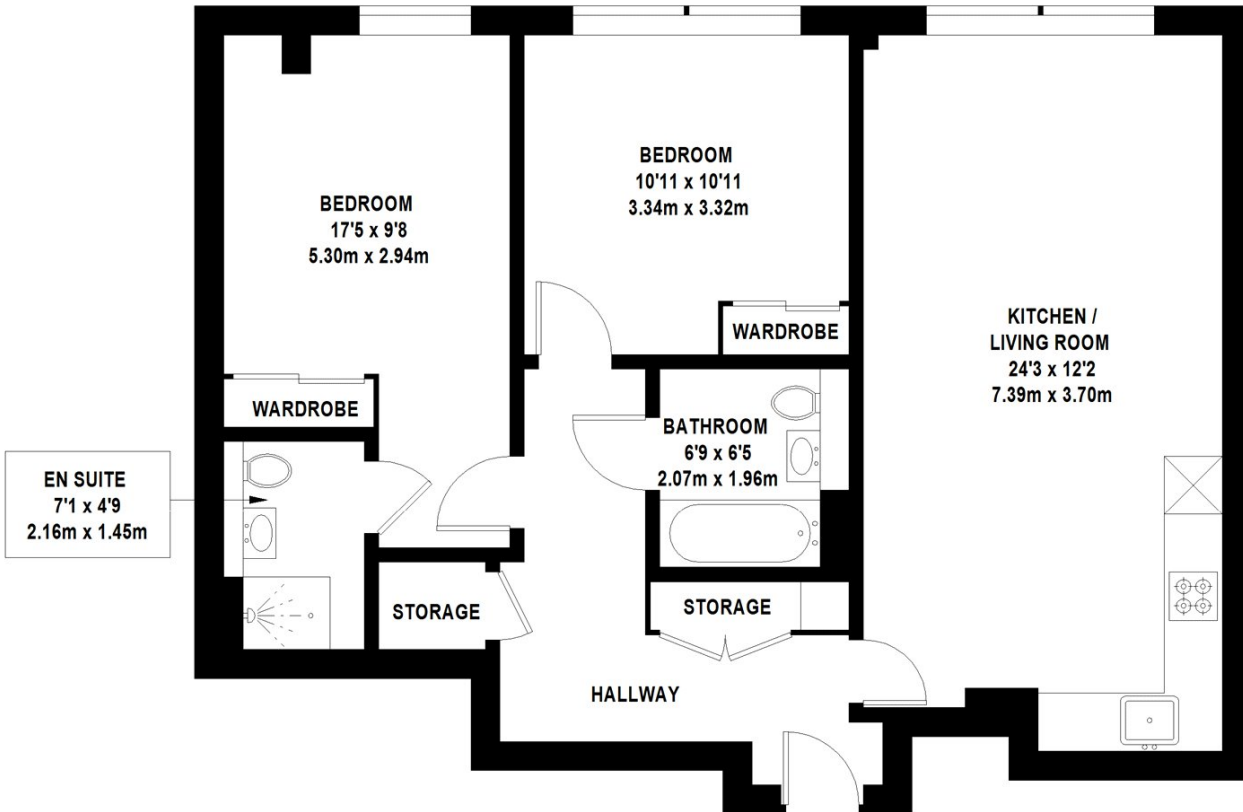


## ABOUT THE HOME

A minutes walk from Bermondsey Street, which offers a vibrant village feel in central London, known for its independent cafés, restaurants, and bars. With London Bridge Station and Borough Station nearby, you'll enjoy excellent connectivity alongside a thriving local scene.







**TOTAL APPROX. FLOOR AREA 785 SQ.FT. (72.89 SQ.M)**

Whilst every attempt has been made to ensure the accuracy of the floor plan contained here, measurements of door, windows, rooms and any other items are approximate and no responsibility is taken for any error, omission, or mis-statement. This plan is for illustrative purposes only and should be used as such by any prospective purchaser. The services, systems and appliances shown have not been tested and no guarantee as to their operability or efficiency can be given © 2020 (ID706267)



**LiFE RESIDENTIAL**

252 Westminster Bridge  
Road, London, SE1 7PD  
Sales: 020 7476 0125  
Lettings: 020 7620 1600

Energy Rating: B. We aim to make our particulars both accurate and reliable. However they are not guaranteed; nor do they form part of an offer or contract. If you require clarification on any points then please contact us, especially if you're traveling some distance to view. Please note that appliances and heating systems have not been tested and therefore no warranties can be given as to their good working order.