



*jordan fishwick*

Eastgate

£1,050 PCM



# Eastgate, Macclesfield, SK10 1GD £1,050 PCM



## The Property

Spacious apartment located within easy reach of the town centre and train station, always a popular development because of the location and the modern and attractive interiors this particular apartment is located on the second floor with views towards Macclesfield town centre and also benefits from allocated parking.

Well presented throughout the property can be FURNISHED OR PART FURNISHED and is AVAILABLE NOW

Communal hallway, private entrance hall, living/dining room, breakfast kitchen with gas hob and electric oven, washing machine and dishwasher, two double bedrooms (main with en-suite shower room) and bathroom with shower over bath  
Allocated parking space.

Contact Macclesfield 01625 502222 £1050.00pcm

COUNCIL TAX C

EPC C

## Directions

SK10 1GD



- NO ONWARD CHAIN
- SECOND FLOOR APARTMENT
- SPACIOUS LIVING ROOM
- TWO DOUBLE BEDROOMS
- TWO BATHROOMS
- EPC RATING C AND COUNCIL TAX BAND C
- WITHIN WALKING DISTANCE TO THE TOWN CENTRE AND TRANSPORT LINKS
- ALLOCATED PARKING SPACE

Postcode - SK10 1GD

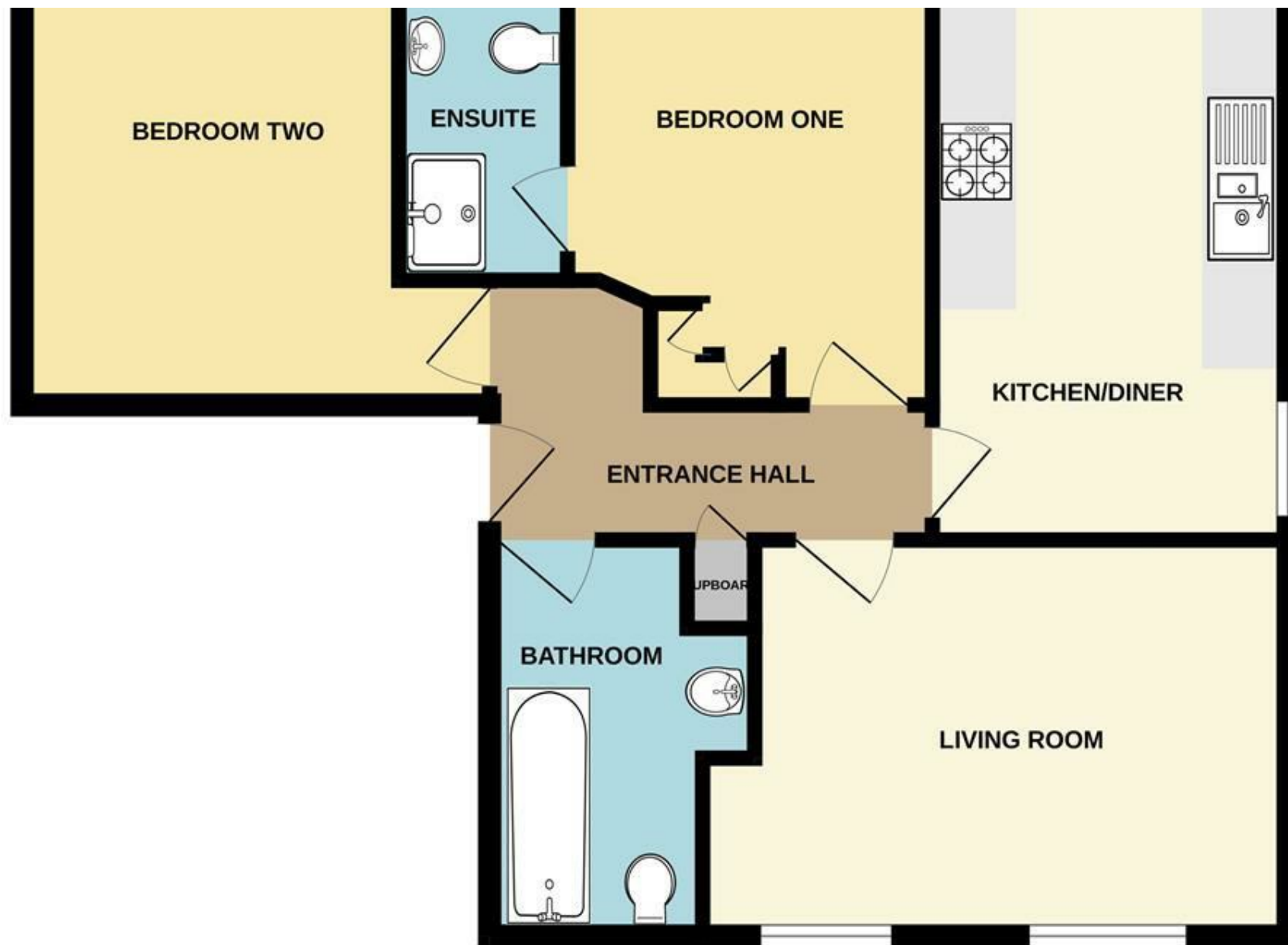
EPC Rating - C

Floor Area - sq ft

Local Authority - Cheshire East

Council Tax - C





These particulars are believed to be accurate but they are not guaranteed and do not form a contract. Neither Jordan Fishwick nor the vendor or lessor accept any responsibility in respect of these particulars, which are not intended to be statements or representations of fact and any intending purchaser or lessee must satisfy himself by inspection or otherwise as to the correctness of each of the statements contained in these particulars. Any floorplans on this brochure are for illustrative purposes only and are not necessarily to scale.

Offices at: Chorlton, Didsbury, Disley, Hale, Glossop, Macclesfield, Manchester Deansgate, Manchester Whitworth Street, New Mills, Sale, Wilmslow and Withington

01625 502222