



White Cottage, Elham - CT4 6LS

Guide Price £595,000

Approximate Gross Internal Area (Excluding Garage and Outbuilding) = 124 sq m / 1339 sq ft

Garage = 38 sq m / 405 sq ft

Outbuilding = 6 sq m / 63 sq ft

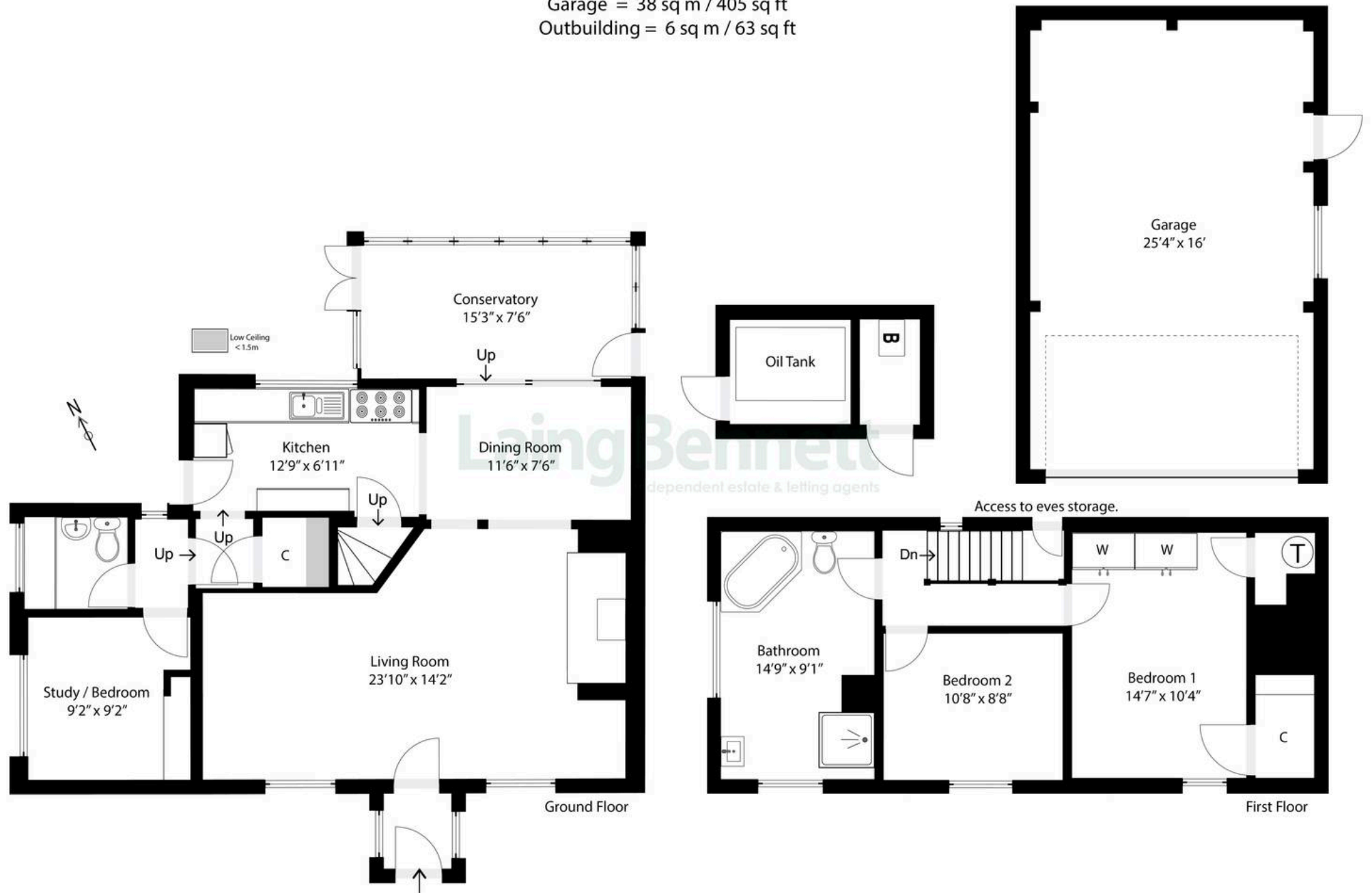


Illustration for identification purposes only. Measurements are approximate. Dimensions given are between the widest points.
Not to scale. Outbuildings are not shown in actual location.
© Unauthorised reproduction prohibited - chriskemps@hotmail.com



White Cottage

Elham, Canterbury

This delightful two/three bedroom cottage is brimming with period character and countryside charm, set in the peaceful hamlet of Wingmore within the picturesque Elham Valley. The home features a spacious and versatile layout with exposed beams, inglenook fireplace, welcoming living area, open plan kitchen/dining room and a bright conservatory that opens to the garden. A study on the ground floor offers the flexibility of a third bedroom. Outside, the property enjoys a generous garden, a substantial double garage, and ample driveway parking, creating an ideal retreat for those seeking a rural lifestyle while remaining within easy reach of local villages and the nearby cathedral city of Canterbury.

Council Tax band: F

Tenure: Freehold

EPC Energy Efficiency Rating: D

EPC Environmental Impact Rating: D











Laing Bennett

Laing Bennett Ltd, The Estate Office, 8 Station Road – CT18 8HP

01303 863393 • info@laingbennett.co.uk • www.laingbennett.co.uk/

DISCLAIMER – These details are for guidance only and do not form part of an offer or contract. Measurements are approximate. Laing Bennett Ltd and the Vendor/Landlord accept no liability. Services and appliances are untested. Applicants must make their own checks. Items shown may not be included. No staff have authority to give warranties.