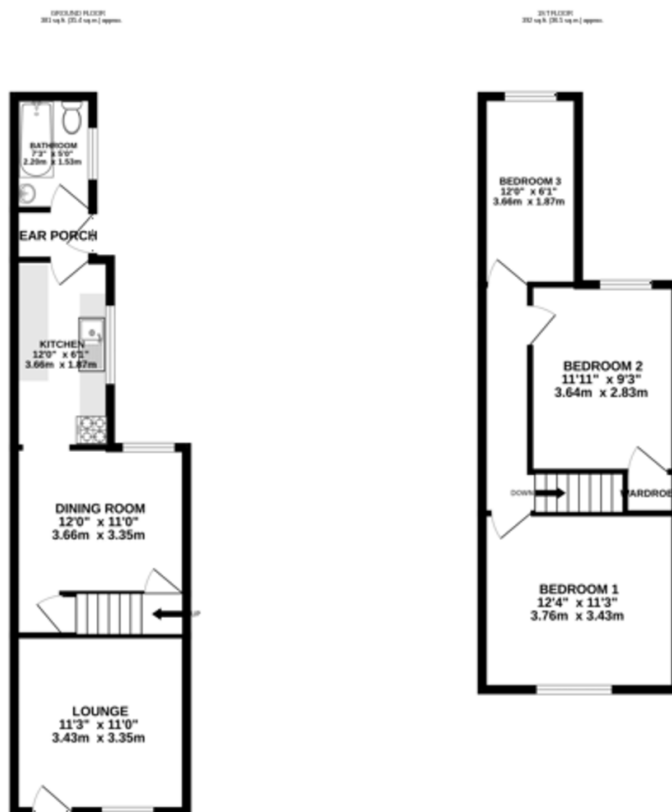




FOR SALE

3 Bed Mid Terraced House in Mountcastle Road, Leicester, LE3 2BW
£190,000

A well-maintained, three-bedroom, mid-terrace property, neutrally decorated throughout and ready to move into. The accommodation features two spacious reception rooms, a galley-style kitchen, and a downstairs bathroom. To the rear is a low-maintenance, walled and paved courtyard garden. Ideally located within walking distance of a wide range of amenities and excellent transport links, this property is perfect for first-time buyers or investors. Offered with no onward chain



TOTAL FLOOR AREA: 773 sq ft (71.9 sq m) approx.
 Whilst every attempt has been made to ensure the accuracy of the floorplan, measurements of doors, windows, rooms and any other items are approximate and no responsibility is taken for any error, omission or misstatement. This plan is for illustrative purposes only and should be used as such by any prospective purchaser. The services, systems and appliances shown have not been tested and no guarantee is given for their operability or efficiency can be given.
 Made with Metrage 12/20

Score	Energy rating	Current	Potential
92+	A		
81-91	B		86 B
69-80	C		
55-68	D		
39-54	E	49 E	
21-38	F		
1-20	G		

- Three-bedroom mid-terrace property
- Well maintained throughout
- Neutrally decorated interior
- Two spacious reception rooms
- Galley-style kitchen
- Downstairs bathroom
- Rear walled and paved courtyard garden
- Walking distance to local amenities

Agents Note: Whilst every care has been taken to prepare these sales particulars, they are for guidance purposes only. All measurements are approximate and for general guidance purposes only and whilst every care has been taken to ensure their accuracy, they should not be relied upon and potential buyers are advised to recheck the measurements.

