



PORTFOLIO
from


brown & merry

Bryants Acre, Wendover, Buckinghamshire HP22 6LA

64 Bryants Acre, Wendover, Buckinghamshire HP22 6LA

A superb four bedroom detached home, conveniently located on a corner plot in a quiet cul de sac 0.4 miles from the village centre. Offered with no onward chain.



Entrance Porch/Hall

Leading through the front door you will already get a sense of the style of this fantastic home. The light porch area boasts storage for both coats and shoes and opens through into a light and spacious reception hall. Stairs rise to the first floor and have a storage cupboard beneath. There are also doors leading to the sitting room, kitchen/diner, and the ground floor shower room.

Sitting Room

This light and airy room has a large, double-glazed window to the front aspect, double French style, part glazed doors opening in to the entrance hall, carpeted flooring, a radiator and single door leading in to the large kitchen /diner.

Kitchen/Dining Room

To the rear of the property, you will find the hub of the house. This superb kitchen/dining room has been meticulously designed to cater for all your needs. The kitchen area offers a great range of both wall and floor units, work surfaces, and utility storage. With integrated AEG appliances the kitchen also has two large windows to the rear aspect overlooking the garden and providing the kitchen with natural light throughout.



There are doors to each end, one leading into the family room and the other leading to the side of the property and rear garden.

Family Room

Another bright reception room with a large window to front aspect and patio doors to the rear. Currently used as a family / play room, this versatile room could also be used as a formal dining room or even a fifth bedroom if required.

Cloakroom / Shower Room

The downstairs Cloakroom / Shower Room has a window to the side aspect, low level W/C, wash hand basin and a large, well fitted shower cubicle to the other end.

First Floor Landing

Rising up from the ground floor you will find a spacious landing, a window to the side aspect, doors to all bedrooms, the family bathroom, storage cupboard and access to the loft space.

Master Bedroom

The master bedroom has a radiator, carpeted flooring, and two windows to the front and rear aspects.

Bedroom Two

The second double bedroom has a large window to the front aspect, carpeted flooring, radiator and space for bedroom furniture.

Bedroom Three

The bedroom is another good sized double with a window to the rear aspect, carpeted flooring and a radiator.

Bedroom Four

The fourth bedroom has a window to the front aspect, carpeted flooring and a radiator.

Family Bathroom

The main family bathroom has been newly re-fitted and boasts a bath with mixer tap and rain shower above, a floating wash hand basin, again with a mixer tap, a low level toilet, fully tiled walls and flooring, a heated towel rail and a window to the rear aspect.

Double Garage

The double garage has two up and over doors, lighting and power as well as a side door.

Garden Room

The substantial garden room is perfect for a multiple of uses. Whether it be a family entertaining space, home office or gym it has space enough for everyone and offers power, lighting, heating and cooling.





Externally

To the front of the property you will find a large driveway with space enough for multiple cars, pathway leading to the rear garden via a gate, flower borders and a variety of shrubs and bushes. The side gate leads to the rear of the property where the landscaped garden has something for everyone. With a large, wrap around decked area perfect for entertaining, a lawn that leads you to the rear where you find a good range of mature planting including shrubs, bushes and trees.

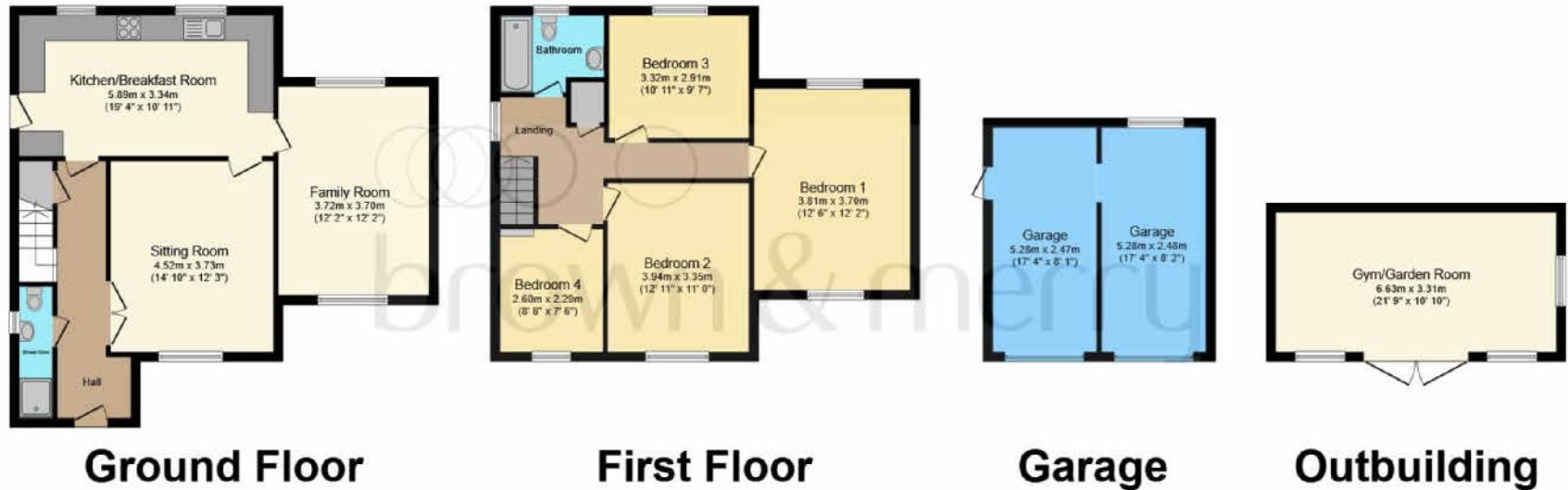


Location

Bryants Acre is a popular residential road which is approx. 0.4miles to the village center. Wendover offers an eclectic mix of shops, pubs and restaurants, together with the ever popular and highly rated schools. The station is again within walking distance and offers a frequent service to Marylebone (50mins), on the awardwinning Chiltern line. The A41 can be found between Aston Clinton and Tring, offering a swift connection to the M25. Alternatively the M40 can be found at High Wycombe.

Education

Buckinghamshire is renowned for its schooling. Wendover has a strong selection of schooling; Ofsted rated 'outstanding' primary schools, the well-regarded John Colet secondary school and the catchment grammar schools, Aylesbury Grammar (boys), Sir Henry Floyd (mixed) and Aylesbury High School (girls). Further education can be found at Aylesbury College.



Total floor area 184.0 m² (1,980 sq.ft.) approx

This floor plan is for illustrative purposes only. It is not drawn to scale. Any measurements, floor areas (including any total floor area), openings and orientation are approximate. No details are guaranteed, they cannot be relied upon for any purpose and they do not form part of any agreement. No liability is taken for any error, omission or misstatement. A party must rely upon its own inspection(s). Powered by www.focalagent.com

welcome to

64 Bryants Acre, Wendover, Buckinghamshire HP22 6LA

This well presented four-bedroom detached family home is being sold with no onward chain. Offering superb, flexible accommodation throughout the two floors as well as a fully enclosed rear garden, large, detached garden room, double garage and parking for multiple vehicles it will leave you wanting for nothing. Viewings are highly recommended.

Guide Price

£750,000

- Four Bedrooms & Two Bathrooms
- Two Reception Rooms + Large Garden Room
- Refurbished Through Out
- Double Garage and Driveway Parking

Tenure: Freehold

EPC Rating: C



To find out more information or to arrange a viewing call

01296 622855

or email wendovercfs@sequencehome.co.uk
Woollerton House, 7 High Street, Wendover, Aylesbury,
Buckinghamshire HP22 6DU
brownandmerry.co.uk

1. MONEY LAUNDERING REGULATIONS Intending purchasers will be asked to produce identification documentation at a later stage and we would ask for your co-operation in order that there is no delay in agreeing the sale. 2. These particulars do not constitute part or all of an offer or contract. 3. The measurements indicated are supplied for guidance only and as such must be considered incorrect. Potential buyers are advised to recheck measurements before committing to any expense. 4. We have not tested any apparatus, equipment, fixtures or services and it is in the buyers interest to check the working condition of any appliances. 5. Where an EPC, or a Home Report (Scotland only) is held for this property, it is available for inspection at the branch by appointment. If you require a printed version of a Home Report, you will need to pay a reasonable production charge reflecting printing and other costs. 6. We are not able to offer an opinion either written or verbal on the content of these reports and this must be obtained from your legal representative. 7. Whilst we take care in preparing these reports, a buyer should ensure that his/her legal representative confirms as soon as possible all matters relating to title including the extent and boundaries of the property and other important matters before exchange of contracts.

