



Shepherds Hill, N6

£1,100,000

A substantial duplex split-level apartment, converted from a handsome Victorian double fronted house on a popular tree-lined road, close to Highgate tube.

Shepherds Hill is ideally located to access both Highgate Village and the amenities at Crouch End Broadway. Excellent transport connections are nearby along with vast green spaces including Queens Woods and The Parkland Walk.

Features

- Three Bedrooms
- Two Bathrooms
- Open Plan Kitchen/Living Room
- Upper Floors
- Period Conversion
- Communal Gardens

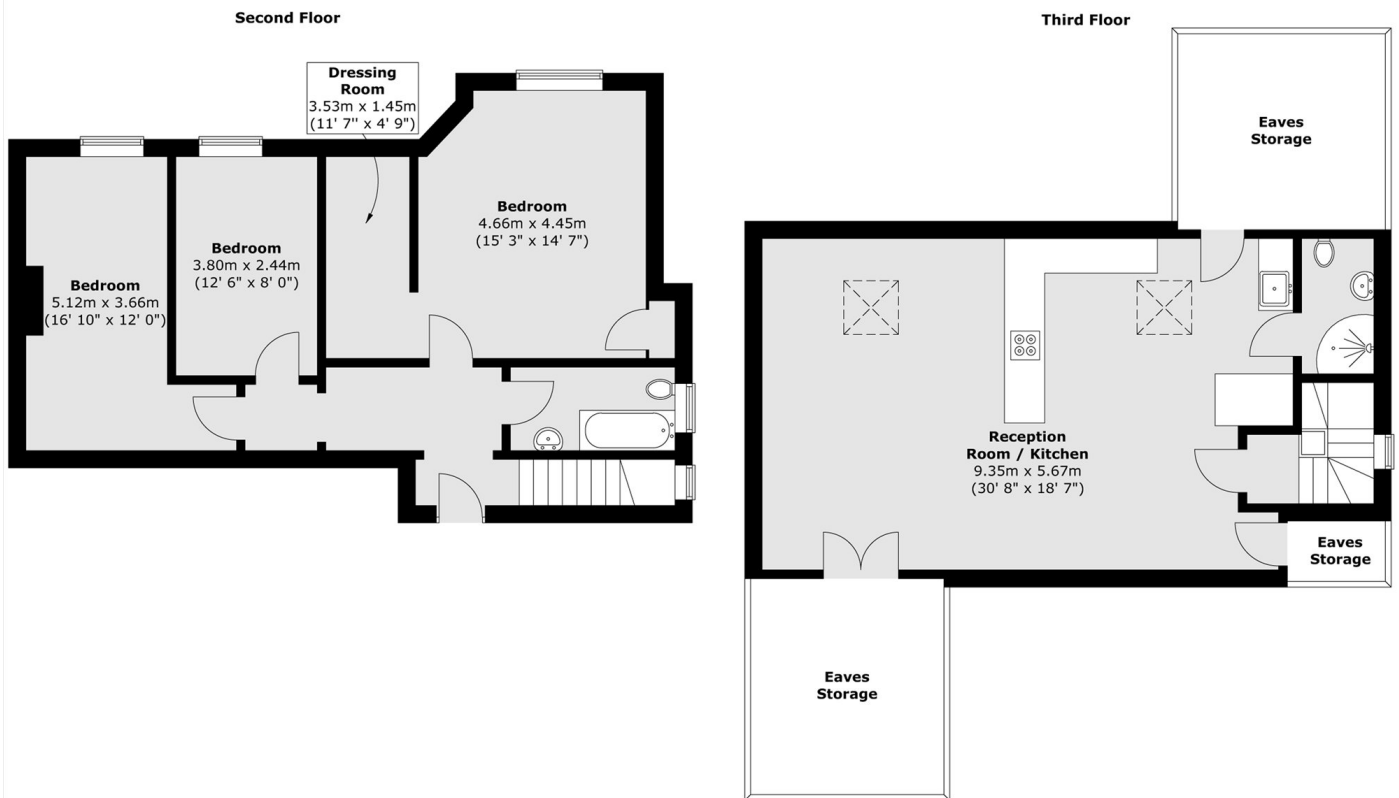


Shepherds Hill, N6

Arranged over the second and third floors, the property consists of three well-proportioned bedrooms, two bathrooms, an impressive modern open plan kitchen reception room whilst also having access to large communal gardens.



Shepherds Hill, London, N6



Total area (approx.) : 123.4 sq. m (1328 sq. ft)
(Excluding eaves storage)