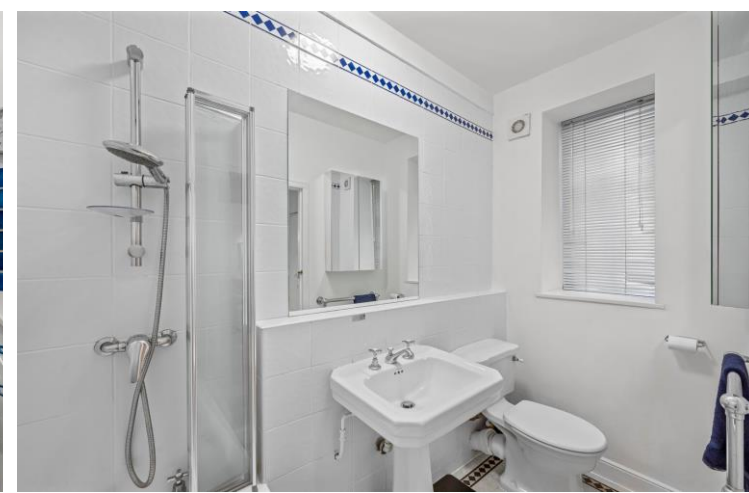




Queen Court
Queen Square, WC1N

CHESTERTONS





Available for a short term stay up to 3 months, this well presented studio apartment is located on Queen Square in the heart of Bloomsbury. Positioned on the ground floor of the well maintained mansion block Queen Court.

The apartment is comprised of a spacious living space with high ceilings and ample storage throughout, kitchenette, full sized bathroom.

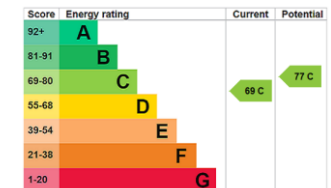
The building is positioned on a beautiful garden square for residents to enjoy. Queen Square is an excellent location moments from Russell Square underground station and the amenities of the Brunswick Centre nearby.

The property is available for a maximum stay of 3 months with all utility bills, hot water, council tax, and Wi-Fi included in the rent.

- Short Term Rental Max 3 months
- Rent inclusive of all utility bills, council tax, wifi
- Hot water Included in Rent
- Furnished

£3,250 pcm

Additional tenant charges apply (fees apply to non-AST tenancies only)
 Tenancy Agreement Fee: £300
 References per Tenant/Guarantor: £60
 Inventory check (approx. £100 – £250 inc. VAT)
chestertons.co.uk/property-to-rent/applicable-fees



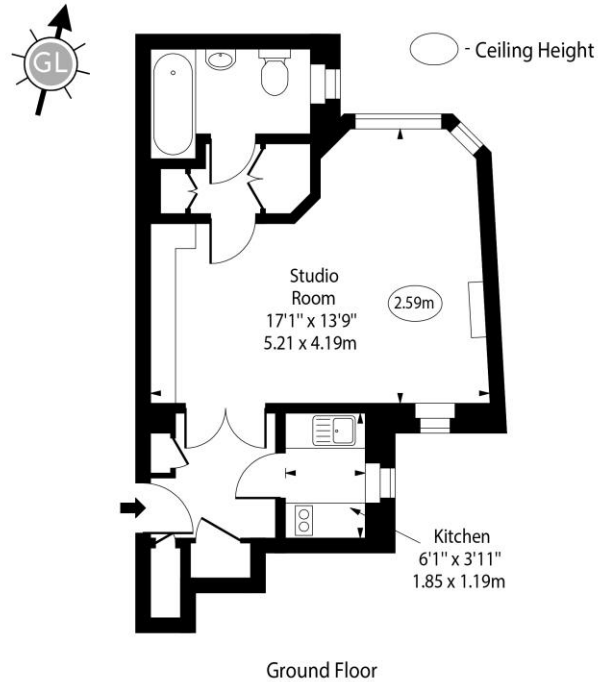
Minimum Term: 1-3 months
Deposit Required: £3,000.00
EPC Rating: C

Chestertons Covent Garden Lettings

196 Shaftesbury Avenue
 Covent Garden
 London
 WC2H 8JF

coventgardenlettingsusers@chestertons.co.uk
 02030408400

Queen Court,
Queen Square



Approx Gross Internal Area 345 Sq Ft - 32.05 Sq M

Every attempt has been made to ensure the accuracy of the floor plan shown. However, all measurements, fixtures, fittings, and data shown are approximate interpretations and for illustrative purposes only. Measured according to the RICS. Not To Scale.
www.goldlens.co.uk
Ref. No. 030999E

