



Lovell Road
Richmond, TW10

CHESTERTONS





This attractive four-bedroom, two-bathroom freehold semi-detached home is ideally located in the highly desirable area of Ham, Richmond. Offering well-balanced accommodation, the property is perfectly suited to families seeking both space and convenience.

The house features generously proportioned living areas and four bedrooms, complemented by two bathrooms. To the rear, a reasonably sized private garden provides an excellent space for outdoor dining, entertaining, or family use.

Situated in a peaceful residential setting, the property benefits from on-street parking and is exceptionally well positioned for local amenities. Richmond and Kingston town centres are both within easy reach, offering an excellent selection of shops, restaurants, and leisure facilities. The area is well served by excellent transport links, providing straightforward access to central London and surrounding areas. The area is well regarded for its excellent selection of local schools — both state and independent — making it an ideal choice for families with children of all ages.

This is a fantastic opportunity to acquire a family home in one of South West London's most sought-after locations.

- Freehold
- On Street Parking
- Garden
- Close to Richmond and Kingston Town Centre

Asking Price £900,000

| Score | Energy rating | Current | Potential |
|-------|---------------|---------|-----------|
| 92+ | A | | |
| 81-91 | B | 87 B | 90 B |
| 69-80 | C | | |
| 55-68 | D | | |
| 39-54 | E | | |
| 21-38 | F | | |
| 1-20 | G | | |

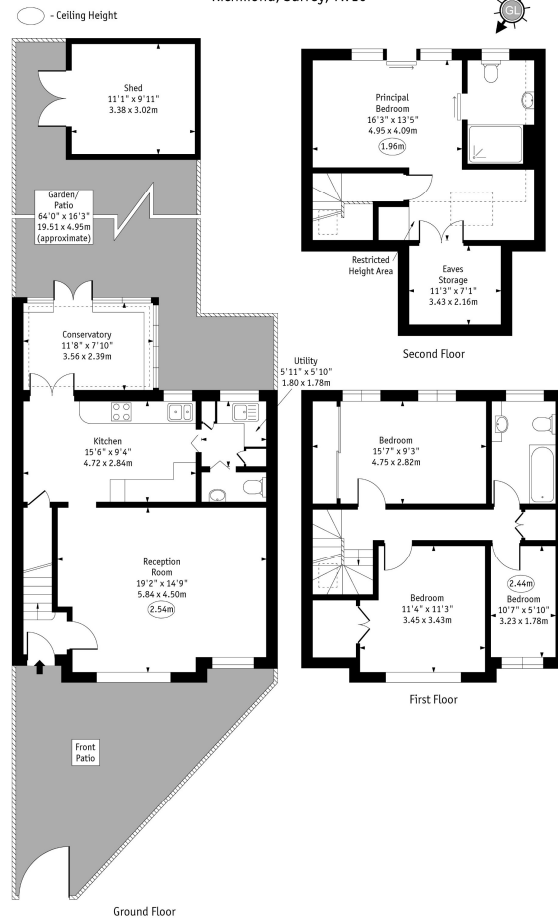
Tenure: Freehold
Service Charge: £0
Ground Rent: £0
Local Authority:
Council Tax Band: E

Chestertons Richmond Sales

23a Friars Stile Road
 Richmond
 Surrey
 TW10 6NH

richmond@chestertons.co.uk
 020 3758 3222

Lovell Road,
Richmond, Surrey, TW10



Approx Gross Internal Area 1440 Sq Ft - 133.78 Sq M
Approx. Floor Area Including Restricted Heights Area 1577 Sq Ft - 146.50 Sq M
(Including Eaves Storage)

Every attempt has been made to ensure the accuracy of the floor plan shown.
However, all measurements, fixtures, fittings, and data shown are approximate interpretations and
for illustrative purposes only. Measured according to the RICS. Not To Scale.
www.giddens.co.uk
Ref. No. 030275EH

Chesterton UK Services Limited trading as Chestertons for themselves and for the vendor of this property whose agents they are, give notice that (i) these particulars do not constitute any part of an offer or contract, (ii) all statements contained within these particulars are made without responsibility on the part of Chestertons or the vendor, (iii) whilst made in good faith, none of the statements contained within these particulars are to be relied upon as a statement or representation of fact, (iv) any intending purchasers must satisfy themselves by inspection or otherwise as to the correctness of each of the statements contained within these particulars, (v) the vendor does not make or give either Chestertons or any person in their employment any authority to make or give representation or warranty whatsoever in relation to this property. Wide angle lenses may be used. ©Copyright Chestertons | Chesterton UK Services Limited | Registered Office 40 Connaught Street, Hyde Park, London W2 2AB Registered Company Number 05334580.

