



Tremadoc Road, Clapham, SW4

2 bedroom flat - conversion for sale

£565,000

Share of Freehold

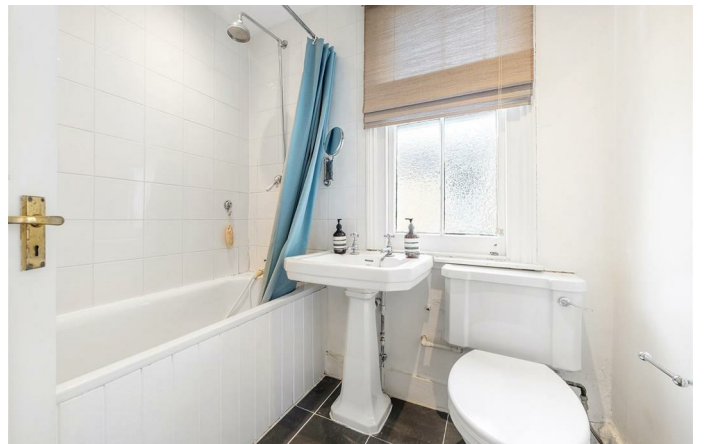
Property Details

A beautifully airy two double bedroom apartment arranged over the upper floors of an elegant Victorian conversion on Tremadoc Road, offering over 850 square feet of bright living space with a wonderfully private feel. Set in an elevated position, the property enjoys abundant natural light from both sides, creating a peaceful yet uplifting atmosphere, all while remaining quiet despite its proximity to Clapham High Street. The reception room spans the width of the home, with three sash windows, high corniced ceilings, an original fireplace and fitted shelving, plus space to work from home. To the rear, a separate dine-in kitchen features wrap-around cabinetry, warm worktops and sleek splashbacks, with the loft above recently insulated to improve comfort and efficiency. Two double bedrooms are arranged across different levels for added privacy, including a tranquil principal bedroom with fitted wardrobes and a feature fireplace. A bathroom with traditional fittings and useful landing storage complete this charming home.

Features

- Two double bedrooms
- Victorian conversion
- Over 850 square feet
- Split over the upper floors
- Bright and airy ambience
- Popular street in central location
- Clapham High Street on the doorstep
- Northern Line and Overground a short stroll away
- Clapham Common nearby
- Share of freehold

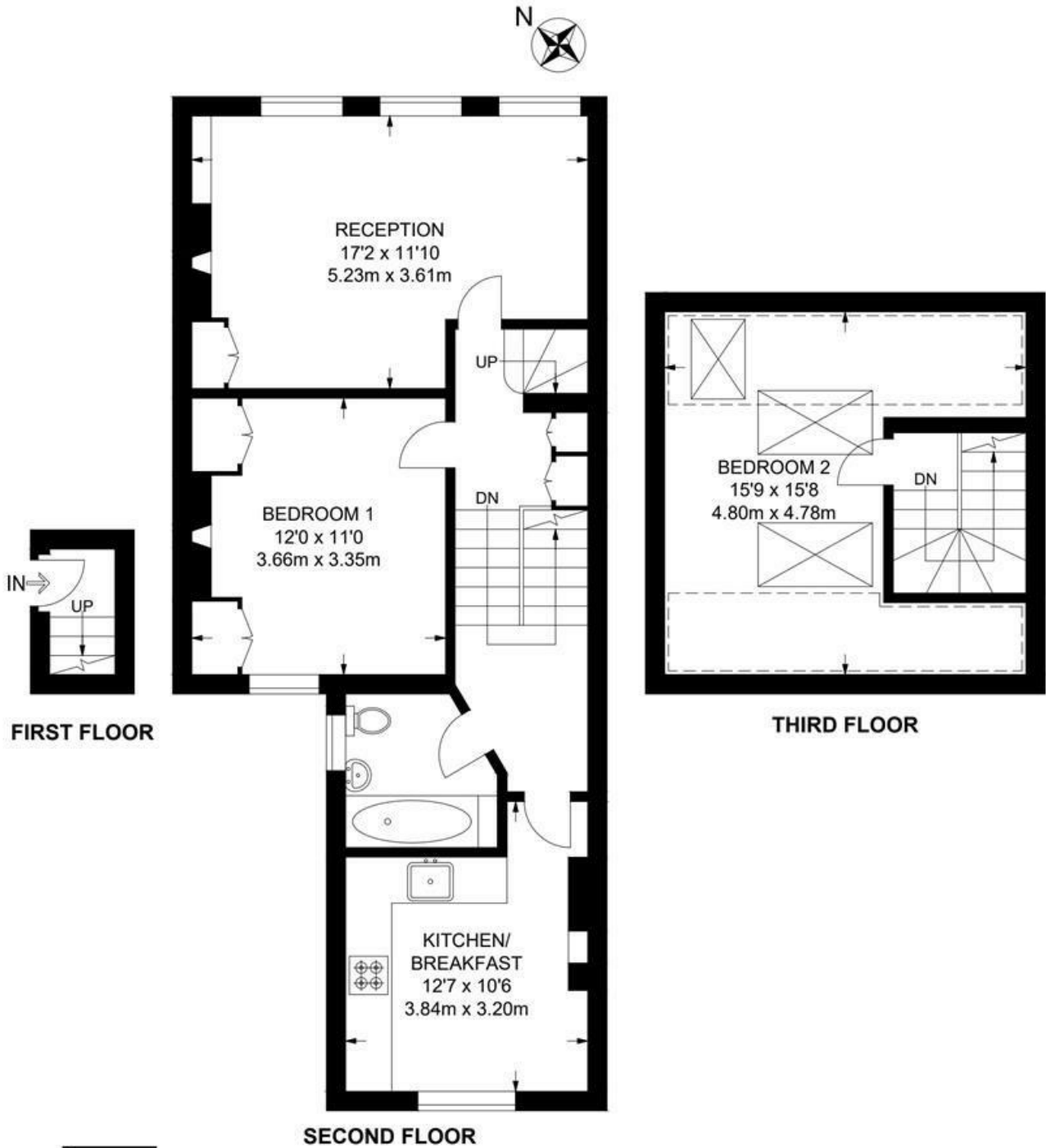
Council tax band C EPC rating D (55)



Tremadoc Road, Clapham, SW4

Tremadoc Road, SW4
2 Bedroom Flat

APPROXIMATE GROSS INTERNAL AREA: 868 SQ FT / 80.6 SQ M



While we try our very best, floor plans are produced as a guide only and we take no responsibility for the precise accuracy with which any property is represented.

Tremadoc Road, Clapham, SW4

