



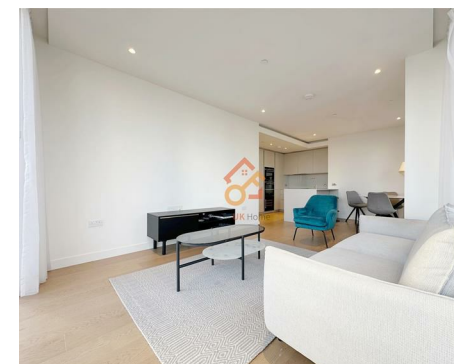
Let **UK** Home

2 Bedrooms

Flat

Located in London

£4,150 Per Month



info@letukhome.co.uk

<https://www.letukhome.co.uk/>

01795 358 886



Marsh Wall London

E14 9RA



Let UK Home are excited to offer this spectacular 2 bedroom apartment in the heart of Hampton Tower part of South Quay Plaza development located in Canary Wharf.

This property comprises a large bright open plan kitchen and living room, two double bedrooms(master with wardrobes & en-suite), a large family sized bathroom and ample storage. A virtual viewing is provided.

Living at SQP, the residents will become exclusive members of The Quay Club, providing fantastic facilities including a state of the art gym, 20m swimming pool overlooking the South Dock, business lounge, screening room and private dining room as well as the stunning 56th floor bar and terrace, offering incredible views of the city skyline.

Located just a few moments from the heart of London's fastest growing business district, SQP is incredibly well connected. Within a several minute walk you can access the South Quay DLR station, Canary Wharf underground station(Jubilee Line) and the Elizabeth Line (Crossrail).

Thanks to the excellent transportation network, residents can quickly reach numerous well-known universities, with most campuses accessible within a short commute, such as the University of Greenwich, London Metropolitan University, and King's College London. In addition, the UCL School of Management has a campus at Canary Wharf.

The development is surrounded by multiple shops, service institutions, and

Marsh Wall London

£4,150 Per Month

- 26th Floor
- 24h Security
- Swimming Pool
- Virtual Viewing Available

- Concierge Service
- The Gym
- Cinema & Game Room
- EPC Rating: B





Let **UK** Home

3F 2 Eastbourne Terrace
 Paddington
 London
 W2 6LG

01795 358 886

info@letukhome.co.uk

Council Tax Band: F

Local Authority:

Agents Note: Whilst every care has been taken to prepare these particulars, they are for guidance purposes only. All measurements are approximate and are for general guidance purposes only and whilst every care has been taken to ensure their accuracy, they should not be relied upon and potential buyers/tenants are advised to recheck the measurements.

Energy Efficiency Rating		Current	Potential
Very energy efficient - lower running costs			
(92 plus) A			
(81-91) B			
(69-80) C		83	83
(55-68) D			
(39-54) E			
(21-38) F			
(1-20) G			
Not energy efficient - higher running costs			
England & Wales	EU Directive 2002/91/EC		

<https://www.letukhome.co.uk/>