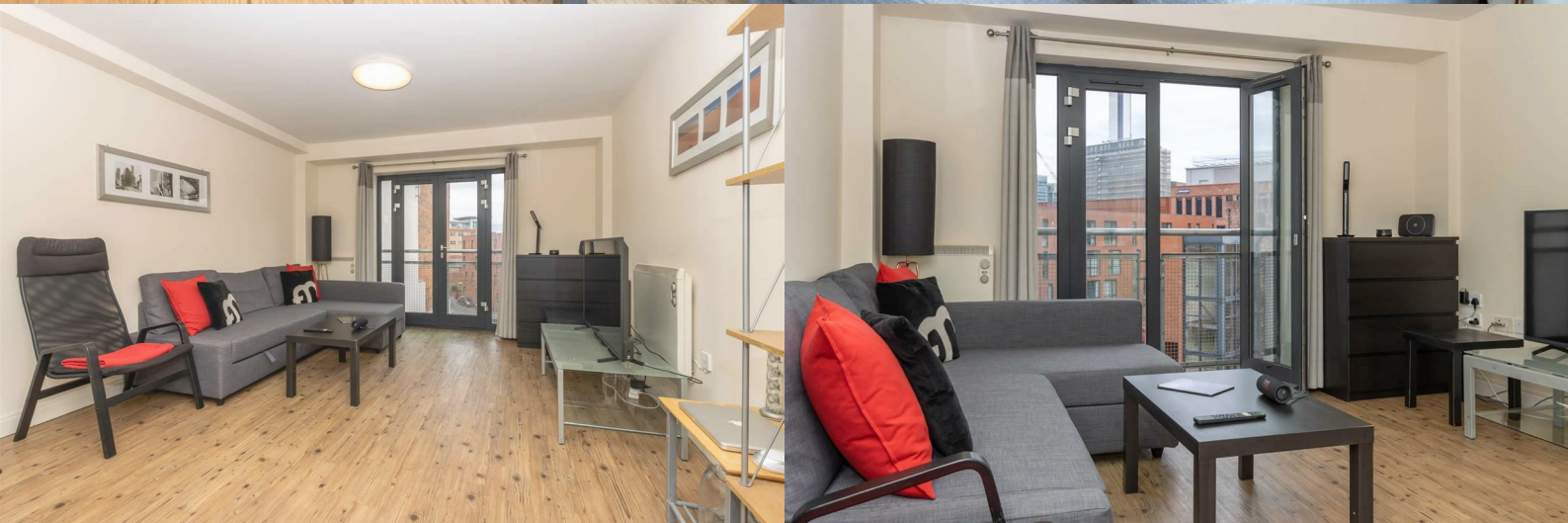




**BUY  
ME**



**Q Apartments, B1 3JA**

**£225,000**

**JEWELLERY QUARTER**

- A spacious two double bedroom apartment
- Allocated parking space included
- Perfect for owner occupiers
- Jewellery Quarter location
- 0.6 miles to Colmore Row

- Two bathrooms: one family bathroom, one en-suite
- Private balcony with delightful views
- Strong investment potential, with gross yield of around 6.7% and tenant in situ (speak to the team for information)
- 0.3 miles to St Pauls Square
- 0.6 miles to New Street Station, with direct train line to Central London



[fleetmilne.co.uk](http://fleetmilne.co.uk)

0121 366 0456

**FleetMilne**