



MUNSTER ROAD, SW6

£2,383 per month

One spacious double bedroom
Large open-plan reception room
Gated entrance
Munster Village

ABOUT THE PROPERTY

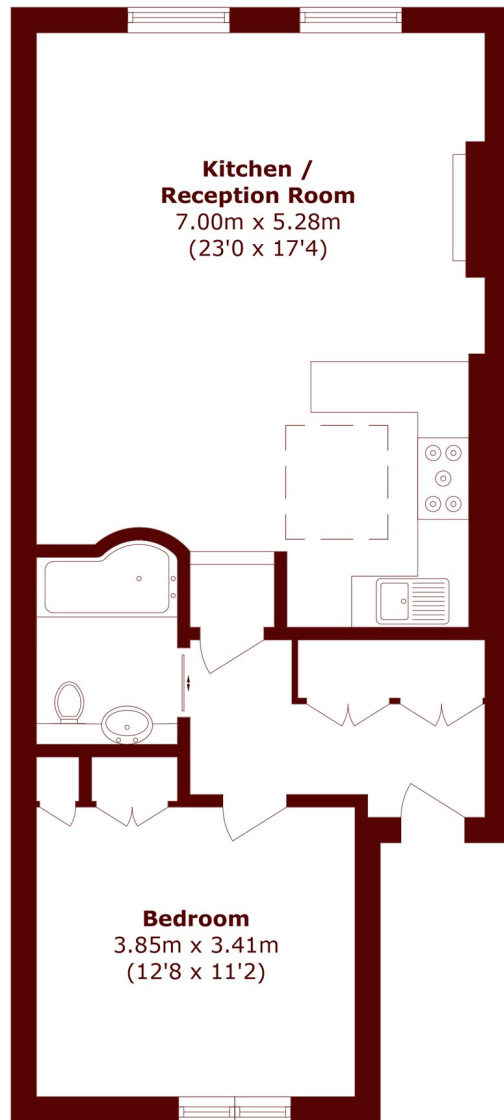
A beautifully presented and larger-than-average one-bedroom apartment, ideally located in the heart of the highly sought-after Munster Village. Positioned within an attractive mansion block and set back from the road, this exceptional home benefits from a secure gated entrance, private front door and access to a communal terrace complete with a built-in bicycle rack.

The property comprises a generous double bedroom with extensive built-in storage, a stylish family bathroom, and a bright open-plan kitchen/reception room featuring integrated appliances, wood flooring throughout and a large skylight that floods the space with natural light. Offering a perfect blend of character, security and





STEP INSIDE MUNSTER ROAD



Total area (approx.): 61.1 sq. m (657.6 sq. ft)

Bishops Park
020 7368 2480

Energy Rating: We aim to make our particulars both accurate and reliable. However, they are not guaranteed; nor do they form part of an offer or contract. If you require clarification on any points then please contact us, especially if you're traveling some distance to view. Please note that appliances and heating systems have not been tested and therefore no warranties can be given as to their good working order

**MARSH &
PARSONS**