



26 Pearmain Close, Stratford-Upon-Avon

Guide Price **£280,000**



26 Pearmain Close

Stratford-Upon-Avon, Stratford-Upon-Avon

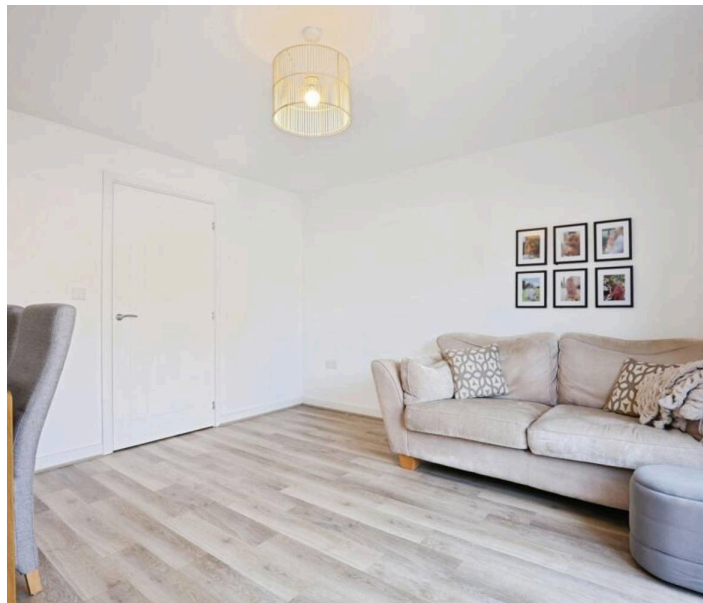
Modern 2 bed home in Bishopton with kitchen, lounge diner, garden, studio, driveway parking, NHBC warranty. Close to train station and motorway, ideal for commuters and first-time buyers. Council Tax band: C

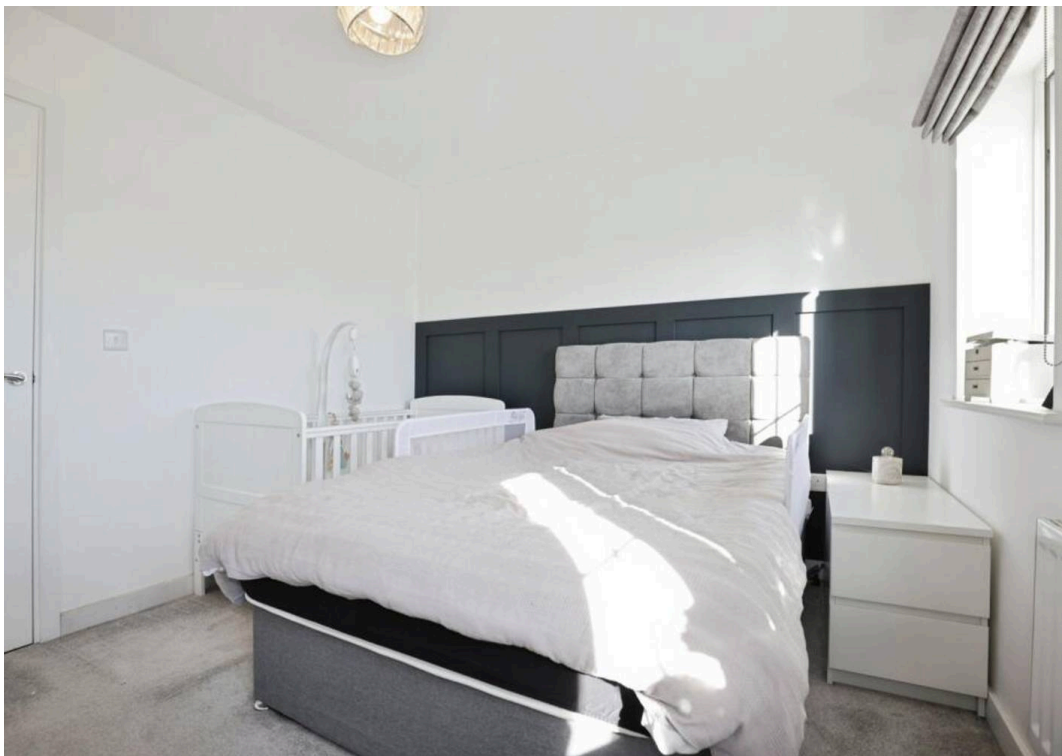
Tenure: Freehold

EPC Energy Efficiency Rating: B

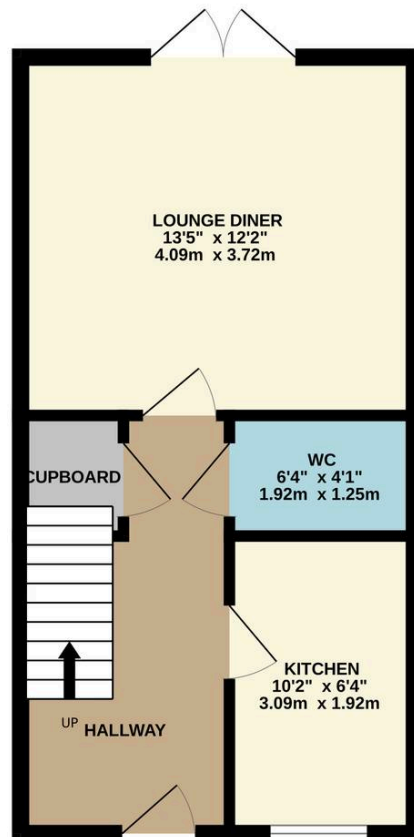
EPC Environmental Impact Rating: B

- Sought After Development
- Close Proximity To Stratford Parkway Train Station & Motorway Links
- Mid Terrace Home
- Two Double Bedrooms
- Lounge Diner
- Kitchen
- Family Bathroom & Downstairs WC
- Driveway
- Enclosed Rear Garden
- Garden Studio

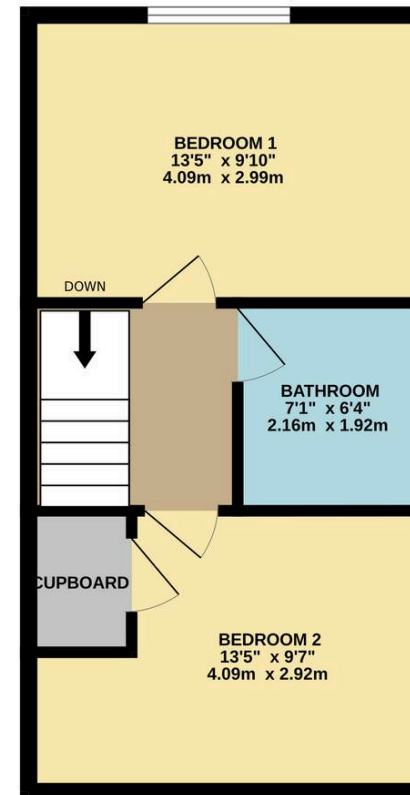




GROUND FLOOR
355 sq.ft. (33.0 sq.m.) approx.



1ST FLOOR
355 sq.ft. (33.0 sq.m.) approx.



TOTAL FLOOR AREA : 710 sq.ft. (66.0 sq.m.) approx.
This floor plan is not to scale and is for guidance purposes only
Made with Metropix ©2026

Sheldon Bosley Knight Stratford-Upon-Avon

Sheldon Bosley Knight, 35-36 Rother Street - CV37 6LP

01789387887 · stratfordsales@sheldonbosleyknight.co.uk · www.sheldonbosleyknight.co.uk/

DISCLAIMER

All fixtures and fittings mentioned in these particulars are included in the sale, all others in the property are specifically excluded.

Photographs are reproduced for general information and it must not be inferred that any item is included for sale with the property.

These particulars are thought to be materially correct. Their accuracy is not guaranteed and they do not form part of any contract.