

Churchway, NW1

£530,000

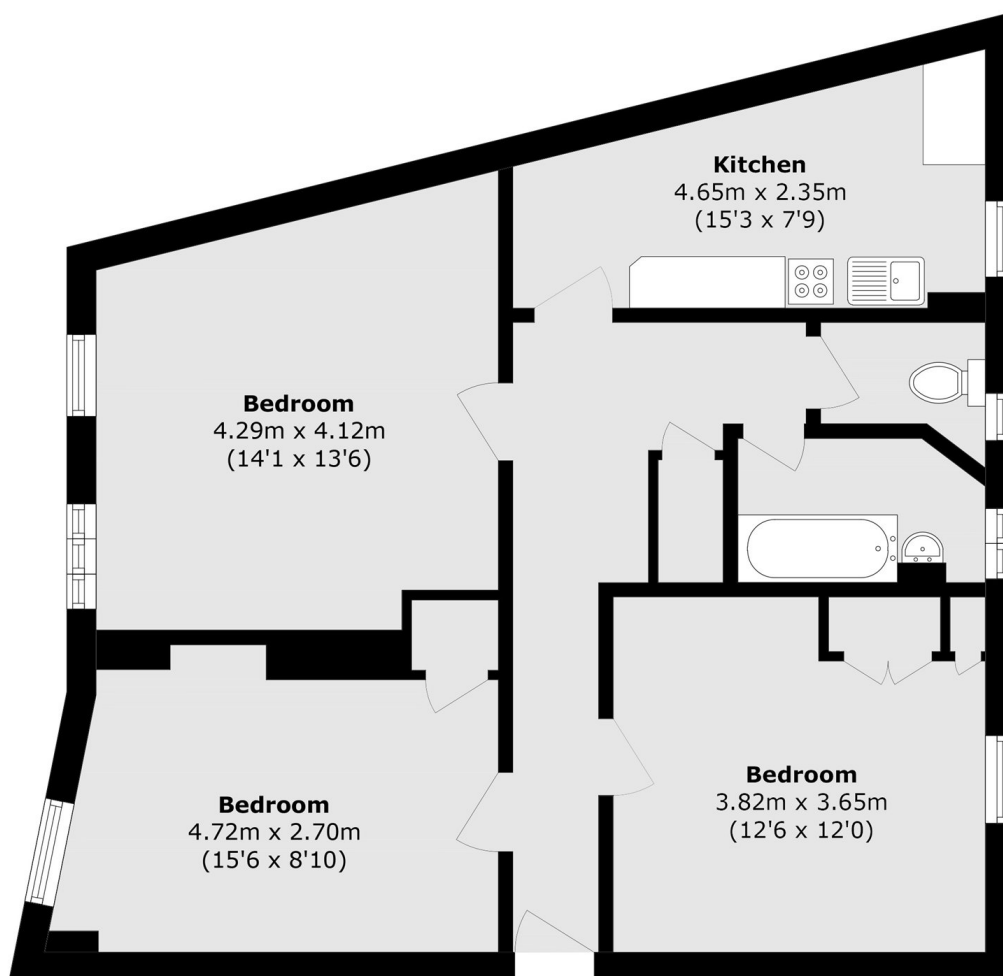
A well presented, two double bedroom home with a separate living room and eat-in kitchen. The property would make a perfect home or buy-to-let investment as a HMO.

Conveniently positioned between Euston and King's Cross stations, the property also offers excellent access to Coal Drops Yard, Granary Square, the British Library, and the Francis Crick Institute.

Features

- Two Double Bedrooms
- Over 800 Sq Ft
- Separate Kitchen
- HMO Compliant
- Excellent Location
- No Onward Chain

Churchway, London, NW1



Total area (approx.): 75.0 sq. m (807.3 sq. ft)