



## Brighton Terrace, SW9

£3,100 Per calendar month

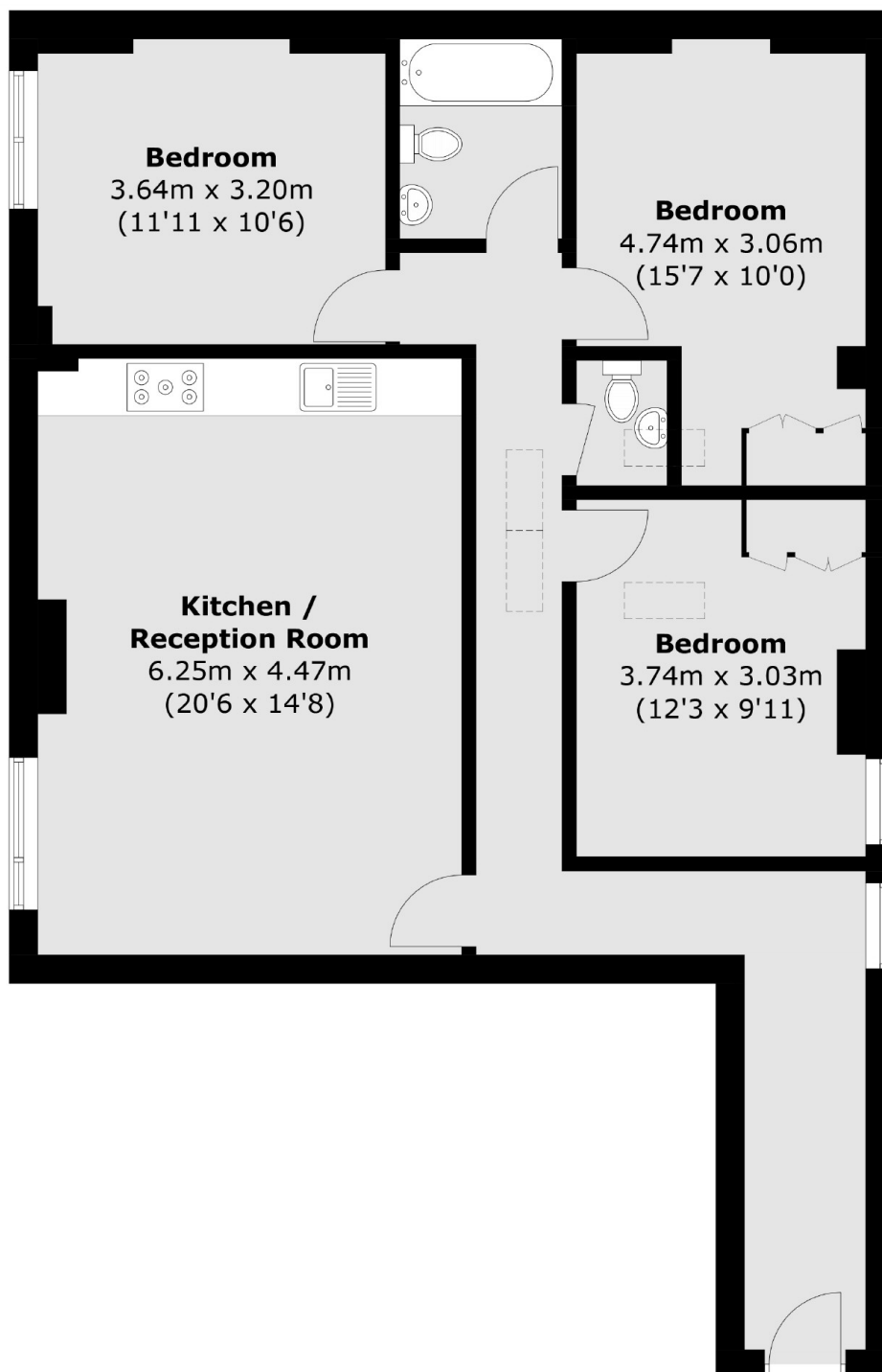
With wooden flooring throughout, three large double bedrooms and a massive open plan reception room, this property in Brighton Terrace has never stayed on the market for long.

In the heart of Brixton Town Centre, with Brixton Pop and the famous Brixton Village on your doorstep, you can be sure your friends are going to be envious of your location!

### Features

- Three Double Bedrooms
- Open Plan Reception
- Wooden Flooring
- Neutral Decor
- Prime Location
- High Ceilings

# Brighton Terrace, London, SW9



Total area (approx.): 88.6 sq. m (953.7 sq. ft)